

1201 2021 09 SEP 09 'E-3

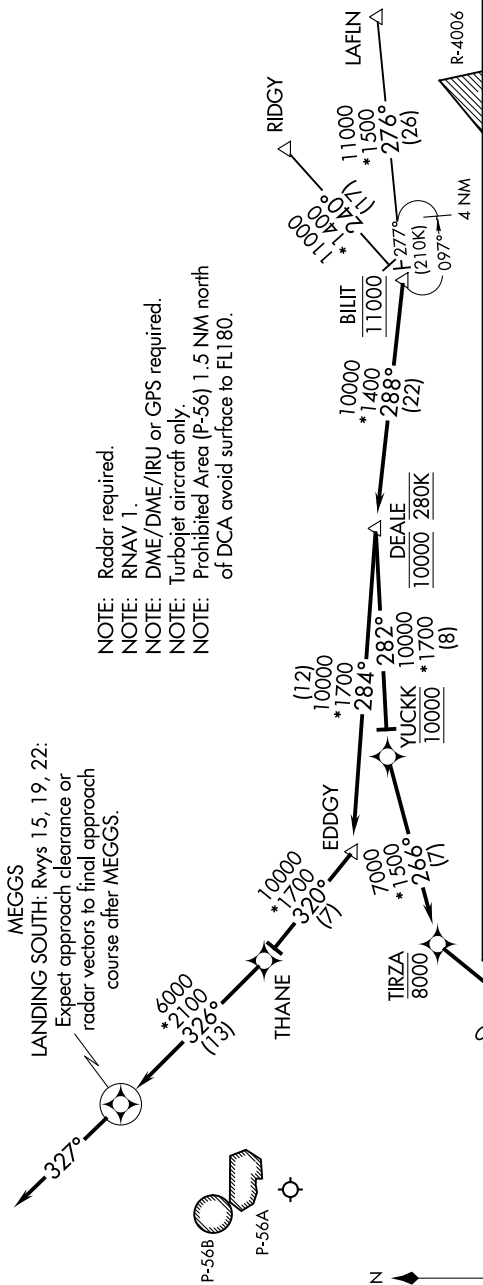
(BILIT.DEALE3) 21112

# DEALE THREE ARRIVAL (RNAV)

AL-443 (FAA)

RONALD REAGAN WASHINGTON NTL (DCA)  
WASHINGTON, DC

POTOMAC\_APP CON  
124.55 317.425  
D-ATIS  
132.65



- NOTE: Radar required.
- NOTE: RNAV 1.
- NOTE: DME/DME/IRU or GPS required.
- NOTE: Turbojet aircraft only.
- NOTE: Prohibited Area (P-56) 1.5 NM north of DCA avoid surface to FL180.

## ARRIVAL ROUTE DESCRIPTION

LAFIN TRANSITION (LAFIN.DEALE3):  
RIDGY TRANSITION (RIDGY.DEALE3):

From BILIT on track 288° to cross DEALE at 10000 and at 280K.

From MITEY on track 326° to MEGGS, then on heading 327°. Expect radar vectors to final approach course.

From DEALE on track 282° to cross YUCKK at 10000, then on track 266° to cross TIRZA at or below 8000, then on track 230° to cross HITEK at 7000, then on track 187° to MITEY, then on heading 187°. Expect radar vectors to final approach course.

From DEALE on track 284° to EDDGY, then on track 320° to THANE, then on track 326° to MEGGS, then on heading 327°. Expect radar vectors to final approach course.

MEGGS  
LANDING SOUTH: Rwy's 15, 19, 22:  
Expect approach clearance or  
radar vectors to final approach  
course after MEGGS.

MITEY  
LANDING NORTH:  
Rwy's 1, 4, 33:  
Expect approach clearance  
or radar vectors to final  
approach course after MITEY.

NOTE: Chart not to scale.

# DEALE THREE ARRIVAL (RNAV)

(BILIT.DEALE3) 29MAR18

WASHINGTON, DC  
RONALD REAGAN WASHINGTON NTL (DCA)

NE-3, 09 SEP 2021 to 07 OCT 2021