

LOC/DME I-VVWH	APP CRS	Rwy Idg	6869
108.5	147°	TDZE	13
Chan 22		Apt Elev	14

LDA Z RWY 19

RONALD REAGAN WASHINGTON NTL (DCA)

⚠ Inop table does not apply. Circling NA northeast of Rwy 15-33. Rwy 19 helicopter visibility reduction below 1 SM NA. DME required.

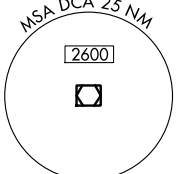
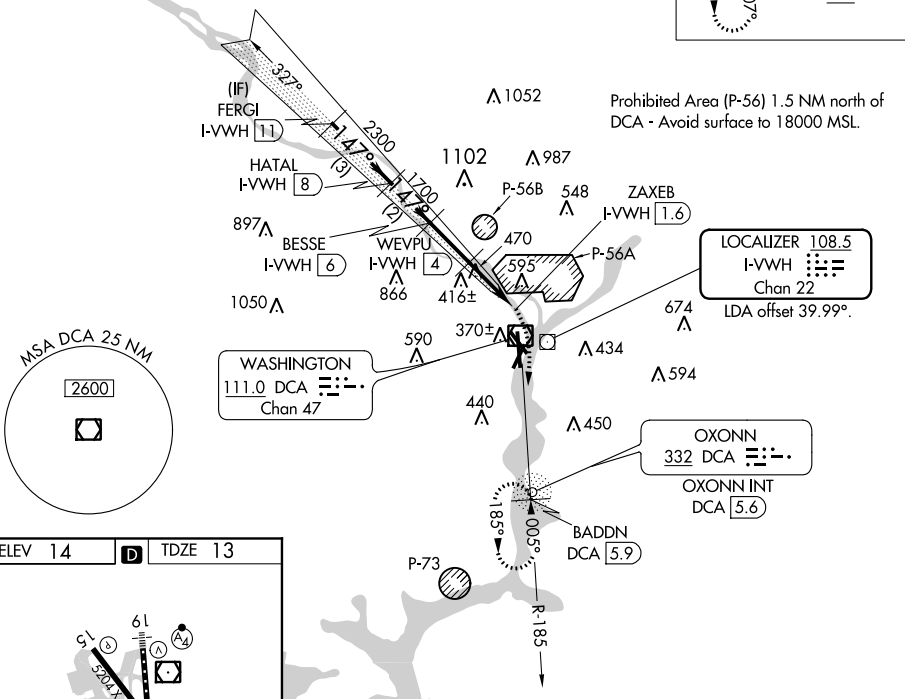
MALSF
MISSED APPROACH: Climbing right turn to 3000 on DCA VOR/DME R-185 to BADDN/DCA VOR/DME 5.9 DME and hold, continue climb-in-hold to 3000.

D-ATIS 132.65	POTOMAC APP CON 119.85 239.25 (WEST/SOUTH) (EAST)	WASHINGTON TOWER 119.1 257.6	GND CON 121.7 257.6	CLNC DEL 128.25	CPDLC
-------------------------	---	--	-------------------------------	---------------------------	-------

ALTERNATE MISSED APCH FIX



RADAR REQUIRED

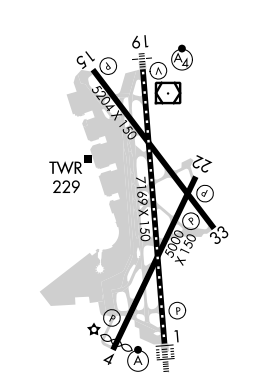


WASHINGTON
111.0 DCA
Chan 47

LOCALIZER 108.5
I-VVWH
Chan 22
LDA offset 39.99°.

OXONN 332 DCA
OXONN INT DCA 5.6

ELEV 14	D	TDZE 13
---------	----------	---------



	FERG1 I-VVWH 11	HATAL I-VVWH 8	BESSE I-VVWH 6	WEVPU I-VVWH 4	ZAXEB I-VVWH 1.6	3000	BADDN DCA 5.9
	3000	2300	1700	1100			
	1.47°			3.04°	TCH 50		
	3 NM	2 NM	2 NM	2.4 NM	0.8		
CATEGORY	A		B		C		D
S-19	720/55		707 (800-1)		720-2		707 (800-2)
C CIRCLING	720-1		706 (800-1)		840-1½ 826 (900-1½)		900-3 886 (900-3)

TDZ/CL Rwy 1
MIRL Rwy 4-22
REIL Rws 4, 22, 15 and 33
HIRL Rws 1-19 and 15-33

LDA Z RWY 19

NE-3, 09 SEP 2021 to 07 OCT 2021

NE-3, 09 SEP 2021 to 07 OCT 2021