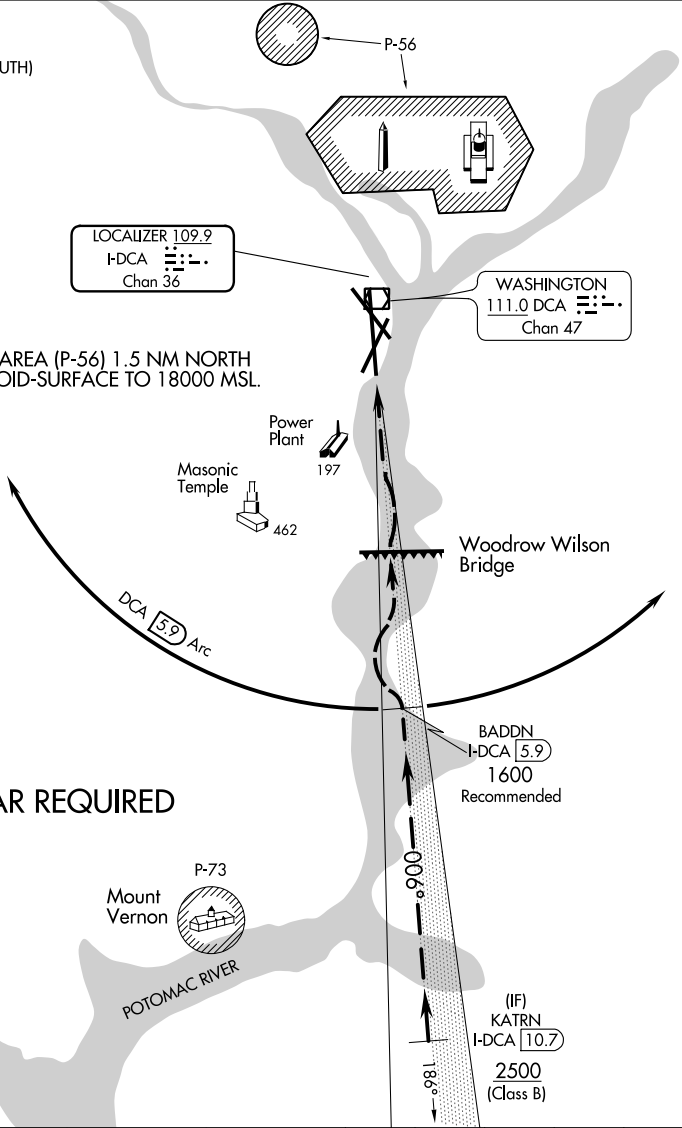


D-ATIS 132.65
 POTOMAC APP CON
 119.85 239.25 (WEST/SOUTH)
 124.2 360.8 (EAST)
 WASHINGTON TOWER
 119.1 257.6
 GND CON
 121.7 257.6
 CLNC DEL
 128.25
 CPDLC

LOCALIZER 109.9
 I-DCA Chan 36

WASHINGTON
 111.0 DCA Chan 47

NOTE: PROHIBITED AREA (P-56) 1.5 NM NORTH OF DCA-AVOID-SURFACE TO 18000 MSL.



RADAR REQUIRED

Vertical Guidance
 Navaid and Angle:
 I-DCA 3.00°

Weather Minimums: 3000
 feet ceiling and 4 mile
 visibility.

| | | | | | | | | | | | | |
|------|---|---|---|---|---|---|---|---|----|----|----|----|
| 1 NM | 2 | 3 | 4 | 5 | 6 | 7 | 8 | 9 | 10 | 11 | 12 | 13 |
|------|---|---|---|---|---|---|---|---|----|----|----|----|

Aircraft may proceed via DCA VOR/DME R-185 (inbound 005°), or via the ILS or LOC/DME RWY 1 approach to 5.9 DME, then follow the Potomac River to the airport.

NE-3, 09 SEP 2021 to 07 OCT 2021

NE-3, 09 SEP 2021 to 07 OCT 2021