

NUMMY THREE ARRIVAL

WASHINGTON, DC

10 SEP 2021 09 SEP 2021 07 OCT 2021

ARRIVAL ROUTE DESCRIPTION

BUCKO TRANSITION (BUCKO.NUMMY3): From over BUCKO on ESL R-282 to ESL VOR/DME, then on ESL R-103 to DRUZZ, then on AML R-297 to AML VOR/DME.

Landing DCA Rwy 1, 4, 33, ADW Rwy 1L, 1R, and DAA: From over AML VOR/DME on AML VOR/DME R-130 to cross NUMMY at 6000, then on heading 187°, expect radar vectors to final approach course.

Landing DCA Rwy 15, 19, 22 and ADW Rwy 19L, 19R: Depart AML VOR/DME on heading 070°, expect radar vectors to final approach course.

POTOMAC APP CON
118.675 323.175
DCA D-ATIS 132.65
KADW D-ATIS
133.675 251.05
*KDA A ATIS
128.175

MORGANTOWN
111.6 MGW
Chan 53

KESSEL
110.8 ESL
Chan 45
N39°13.53'-W78°59.37'

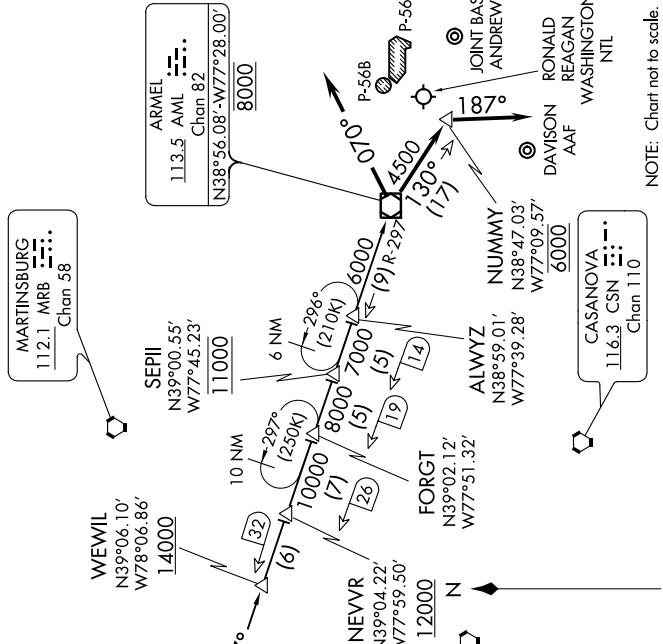
MARTINSBURG
112.1 MRB
Chan 58

BUCKO
N39°17.63'
W79°49.50'
H-10-12
FL310

HONNIR
N39°14.78'
W79°14.15'
FL260

EKINS
114.2 EKN
Chan 89

NOTE: DME and RADAR required.
NOTE: Turboprops only; Turboprops as assigned by ATC only.
NOTE: Aircraft use DCA, ADW, or DAA ATIS to determine direction of landing prior to ALWYZ.
NOTE: PROHIBITED AREA (P-56) north of DCA - AVOID - surface 18000.
NOTE: Maintain last ATC assigned altitude until cleared to descend via the NUMMY THREE, then comply with altitude restrictions as published.



NOTE: Chart not to scale.

NUMMY THREE ARRIVAL

WASHINGTON, DC

10 SEP 2021 09 SEP 2021 07 OCT 2021