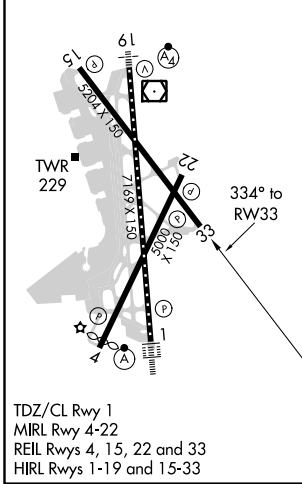
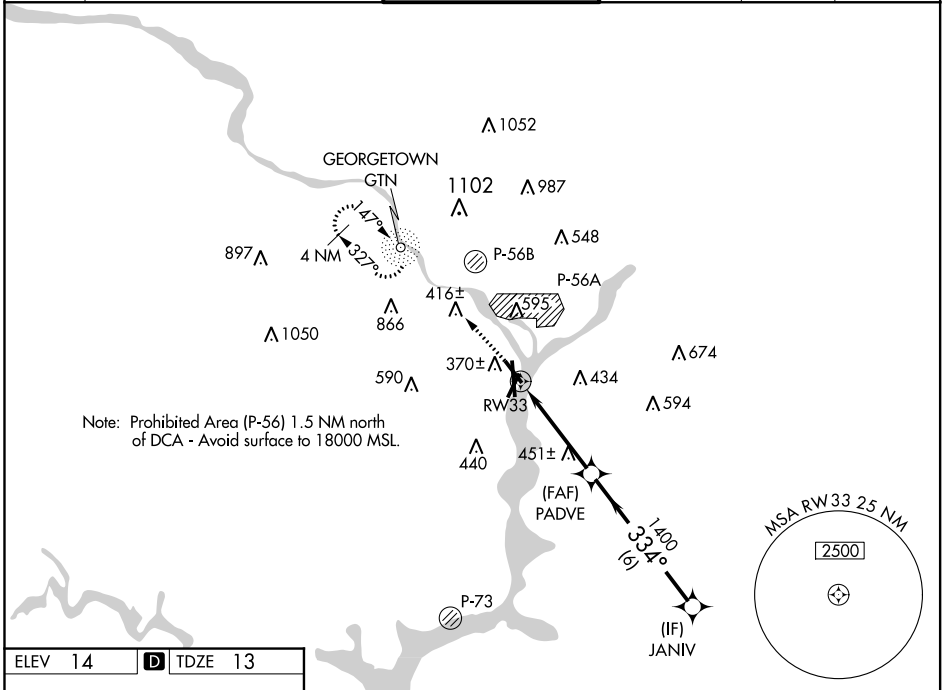


WAAS CH 90123 W33A	APP CRS 334°	Rwy Idg 5204 TDZE 13 Apt Elev 14
--	------------------------	---

RNAV (GPS) RWY 33

RONALD REAGAN WASHINGTON NTL (DCA)

RNP APCH: ⚠ Circling NA northeast of Rwy 15-33. For uncompensated Baro-VNAV systems, LNAV/VNAV NA below -11°C or above 54°C.		MISSED APPROACH: Climb to 2200 direct GTN NDB and hold, continue climb-in-hold to 2200.			
D-ATIS 132.65	POTOMAC APP CON 119.85 239.25 (WEST/SOUTH) 124.2 360.8 (EAST)	WASHINGTON TOWER 119.1 257.6	GND CON 121.7 257.6	CLNC DEL 128.25	CPDLC



2200	GTN	VGSi and RNAV glidepath not coincident (VGSi Angle 3.00/TCH 37).			
* LNAV only.		* 2.1 NM to RWY 33		JANIV	
RWY 33		PADVE 1400		2100	
2.1 NM		2.1 NM		6 NM	
CATEGORY	A	B	C	D	
LPV DA	287-7/8		274 (300-7/8)		
LNAV/VNAV DA	609-2		596 (600-2)		
LNAV MDA	720-1	707 (800-1)		720-2	707 (800-2)
C CIRCLING	720-1	706 (800-1)		840-2 1/2 826 (900-2 1/2)	900-3 886 (900-3)

NE-3, 09 SEP 2021 to 07 OCT 2021

NE-3, 09 SEP 2021 to 07 OCT 2021