

# RIVER VISUAL RWY 19

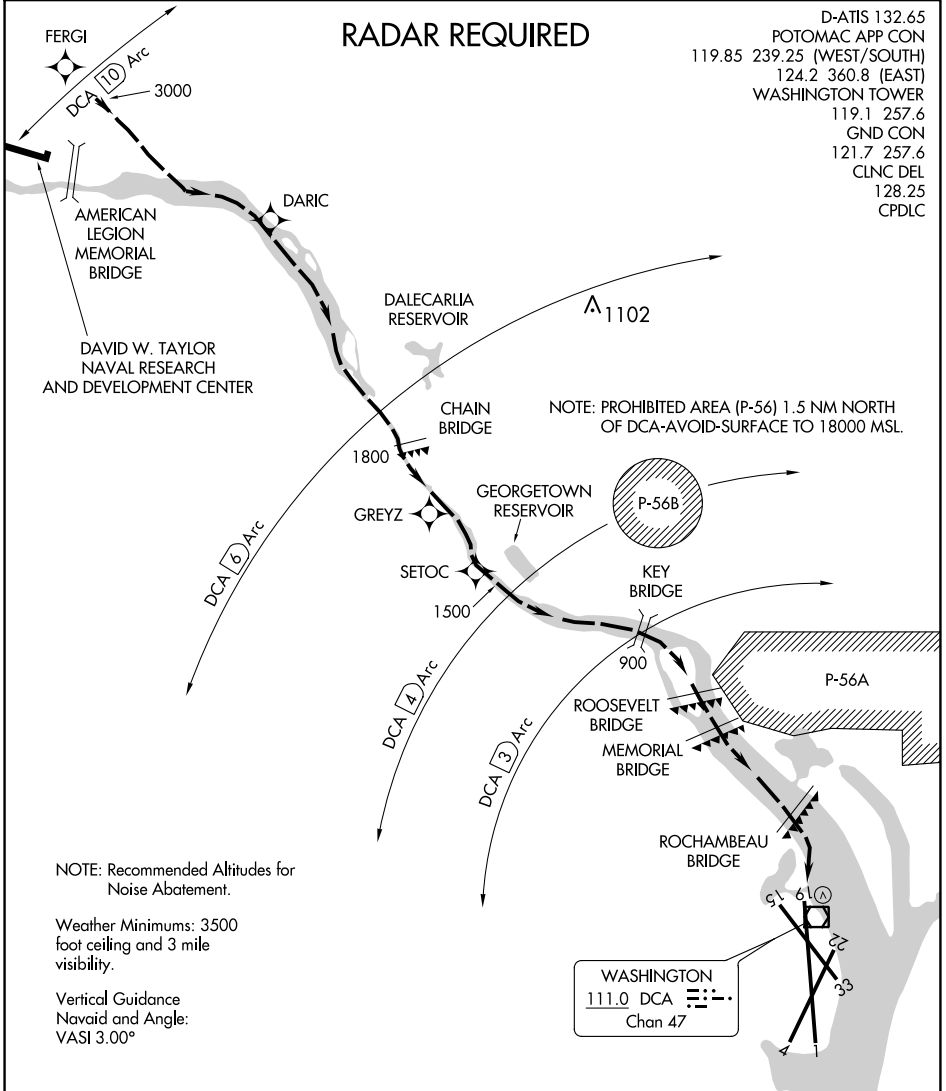
RONALD REAGAN WASHINGTON NTL (DCA)

AL-443 (FAA)

WASHINGTON, DC

## RADAR REQUIRED

D-ATIS 132.65  
 POTOMAC APP CON  
 119.85 239.25 (WEST/SOUTH)  
 124.2 360.8 (EAST)  
 WASHINGTON TOWER  
 119.1 257.6  
 GND CON  
 121.7 257.6  
 CLNC DEL  
 128.25  
 CPDLC



NOTE: Recommended Altitudes for Noise Abatement.

Weather Minimums: 3500 foot ceiling and 3 mile visibility.

Vertical Guidance  
Navaid and Angle:  
VASI 3.00°

WASHINGTON  
 111.0 DCA  
 Chan 47

NE-3, 09 SEP 2021 to 07 OCT 2021

NE-3, 09 SEP 2021 to 07 OCT 2021

1 NM	2	3	4	5	6	7	8
------	---	---	---	---	---	---	---

### RIVER VISUAL RWY 19

Aircraft may visually follow the river to the airport, or may proceed via the RNAV (RNP) RWY 19 Approach to SETOC waypoint, then follow the river to the airport.

NOTE: Clearance for visual approach does not authorize penetration of P-56.

# RIVER VISUAL RWY 19

38°51'N-77°02'W

WASHINGTON, DC

Amdt 5 10DEC15

RONALD REAGAN WASHINGTON NTL (DCA)