

APP CRS	Rwy Idg	6869
007°	TDZE	14
	Apt Elev	14

RNAV (RNP) RWY 1

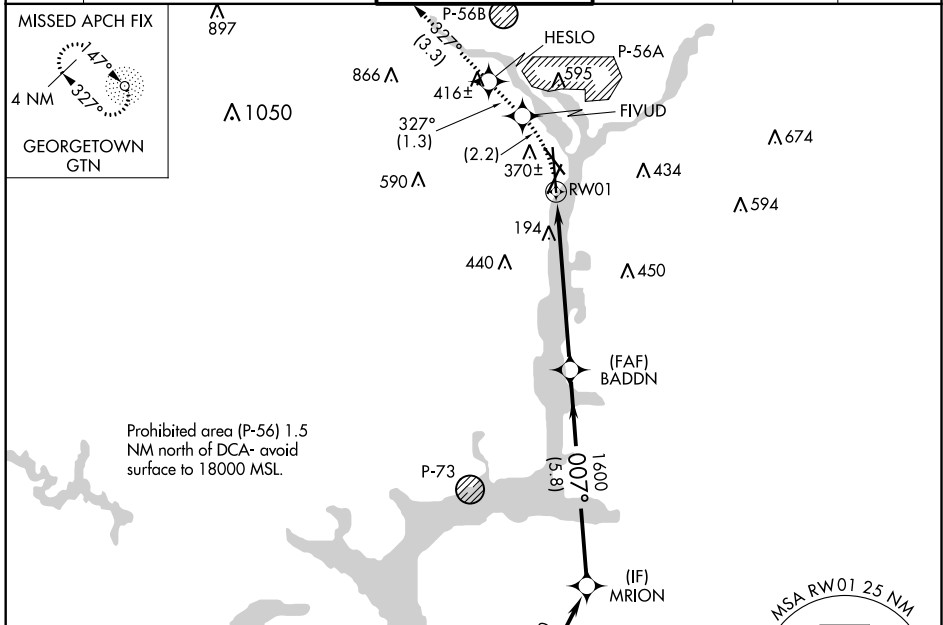
RONALD REAGAN WASHINGTON NTL (DCA)

▽ For uncompensated Baro-VNAV systems, procedure NA below -10°C (14°F) or above 48°C (120°F). RF required. GPS required. Missed approach requires RNP less than 1.0. For inop ALS, increase RNP 0.30 all Cats visibility to 1¼ mile.

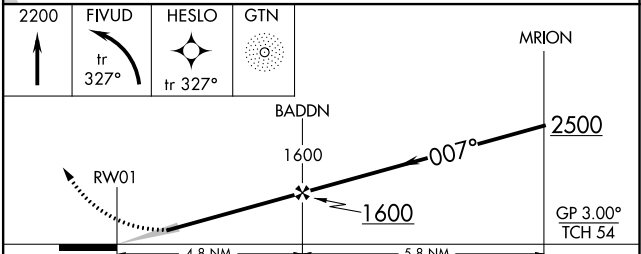
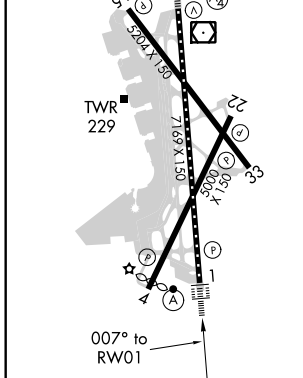
ALSF-2

MISSED APPROACH: (Do not exceed 185K until FIVUD) Climb to 2200 left turn to FIVUD and on track 327° to HESLO and on track 327° to GTN NDB and hold.

D-ATIS	POTOMAC APP CON (WEST/SOUTH)		WASHINGTON TOWER	GND CON	CLNC DEL	CPDLC
132.65	119.85	239.25	119.1 257.6	121.7 257.6	128.25	
	124.2	360.8				
	(EAST)					



ELEV 14	D	TDZE 14
REIL Rwy 4, 22, 15 and 33		
HIRL Rwy 1-19 and 15-33		
MIRL Rwy 4-22		
TDZ/CL Rwy 1		



CATEGORY	A	B	C	D
RNP 0.30 DA	552/60		538 (600-1¼)	

AUTHORIZATION REQUIRED

NE-3, 09 SEP 2021 to 07 OCT 2021

NE-3, 09 SEP 2021 to 07 OCT 2021