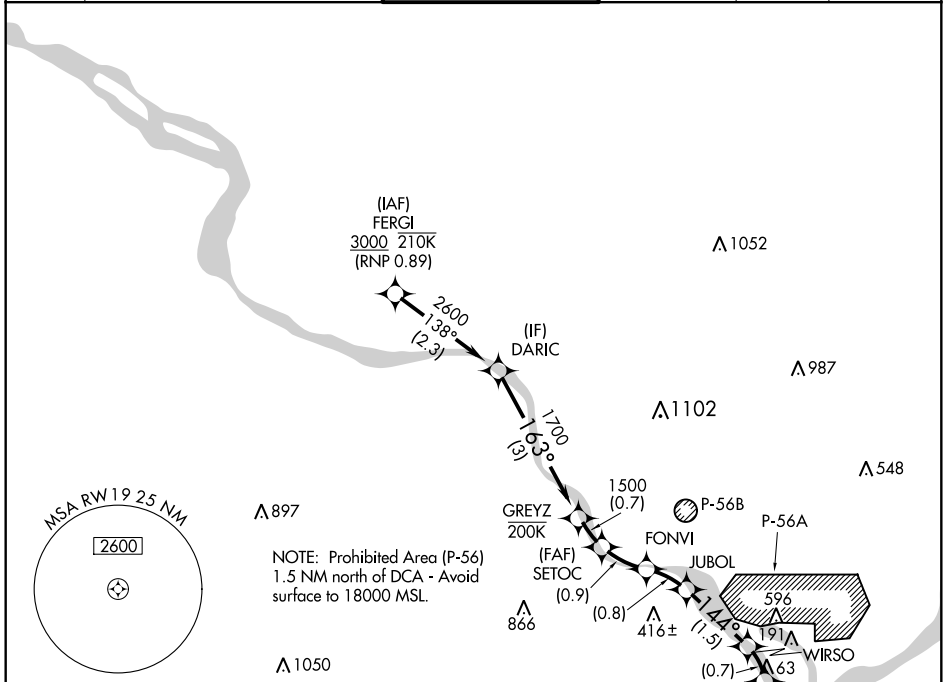


APP CRS	Rwy Idg	6869
187°	TDZE	13
	Apt Elev	14

RNAV (RNP) RWY 19

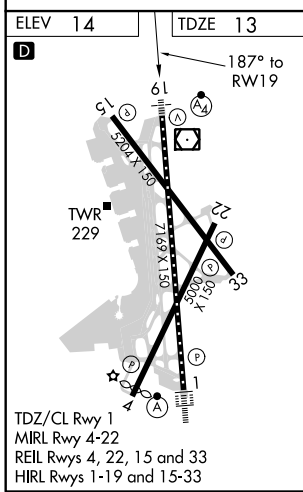
RONALD REAGAN WASHINGTON NTL (DCA)

For uncompensated Baro-VNAV systems, procedure NA below -9°C (16°F) or above 54°C (130°F). Inoperative table does not apply. RF and GPS required.		MISSED APPROACH: Climb to 3000 on the final approach track to RWY19 then direct BADDN and hold, continue climb-in-hold to 3000.			
		D-ATIS	POTOMAC APP CON	WASHINGTON TOWER	GND CON
132.65	119.85 239.25 124.2 360.8 (WEST/SOUTH) (EAST)	119.1 257.6	121.7 257.6	128.25	



NE-3, 09 SEP 2021 to 07 OCT 2021

NE-3, 09 SEP 2021 to 07 OCT 2021



MISSED APCH FIX								
DARIC	GREYZ	SETOC	FONVI	JUBOL	WIRSO	FIROP	Final App tr to RWY19	BADDN
2600	1700	1500	1214	955	480	253		
GP 3.00° TCH 50		1763°		1744°		187°		
3 NM		0.7 NM	0.9 NM	0.8 NM	1.5 NM	0.7	0.6 NM	
CATEGORY	A	B		C		D		
RNP 0.11 DA		491-1½		478 (500-1½)				
RNP 0.30 DA		550-1¾		537 (600-1¾)				
AUTHORIZATION REQUIRED								