

ILS or LOC RWY 19R

LOC I-CWX 109.9	APCH CRS 188°	Rwy ldg 19R 12,000 19L 12,007 TDZE 19R 1372 19L 1365 Arprt Elev 1372
---------------------------	-------------------------	---

AL-453 [USAF]

MC CONNELL AFB (KIAB)

RADAR or DME Required.

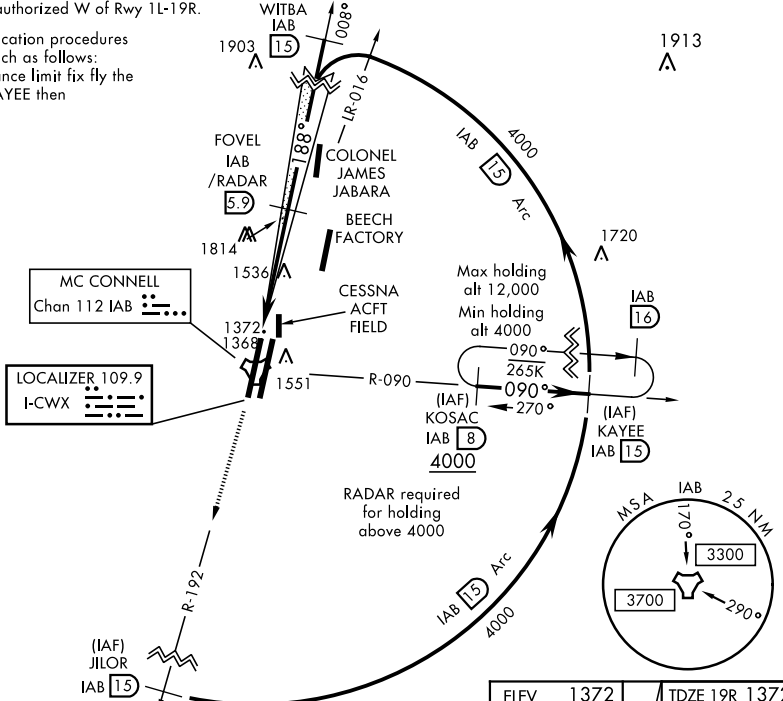


MISSED APPROACH: Climb to 4000 via IAB TACAN R-192 to 15 DME (JILOR). Expect further clearance from ATC.

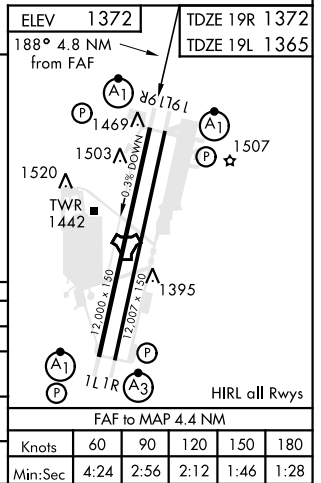
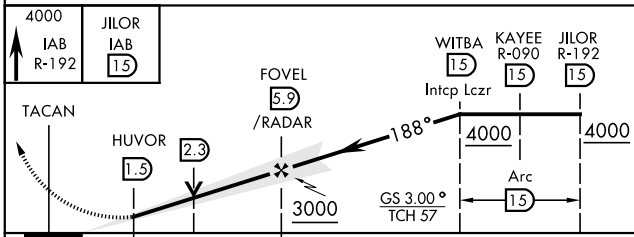
D-ATIS 124.65 269.9	WICHITA APP CON 134.8 269.1	MC CONNELL TOWER 127.25 291.775	GND CON 118.0 275.8
-------------------------------	---------------------------------------	---	-------------------------------

*** Circling not authorized W of Rwy 1L-19R.

ATC lost communication procedures on missed approach as follows:
At 15 DME clearance limit fix fly the 15 DME arc to KAYEE then KOSAC and hold.



EMERG SAFE ALT 100 NM 4200



CATEGORY	A	B	C	D	E
S-ILS 19R *	1572/24		200	(200-½)	
S-LOC 19R **	1820/24	448 (500-½)	1820/45	448	(500-¾)
SIDESTEP RWY 19L	1820/55	455 (500-1)	1820-1¾	455	(500-1¾)
*** CIRCLING	1900-1	528 (600-1)	1900-1½ 528 (600-1½)	2400-3	1028 (1100-3)

FAF to MAP 4.4 NM					
Knots	60	90	120	150	180
Min:Sec	4:24	2:56	2:12	1:46	1:28

ILS or LOC RWY 19R

NC-2, 09 SEP 2021 to 07 OCT 2021

NC-2, 09 SEP 2021 to 07 OCT 2021