

WICHITA, KANSAS

# RNAV (GPS) RWY 19R

WAAS CH 71277 W19A	APCH CRS 189°	Rwy ldg TDZE Arpt Elev	12,000 1372 1372
--------------------------	------------------	------------------------------	------------------------

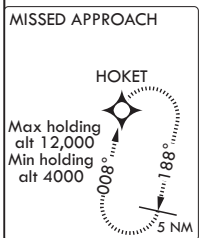
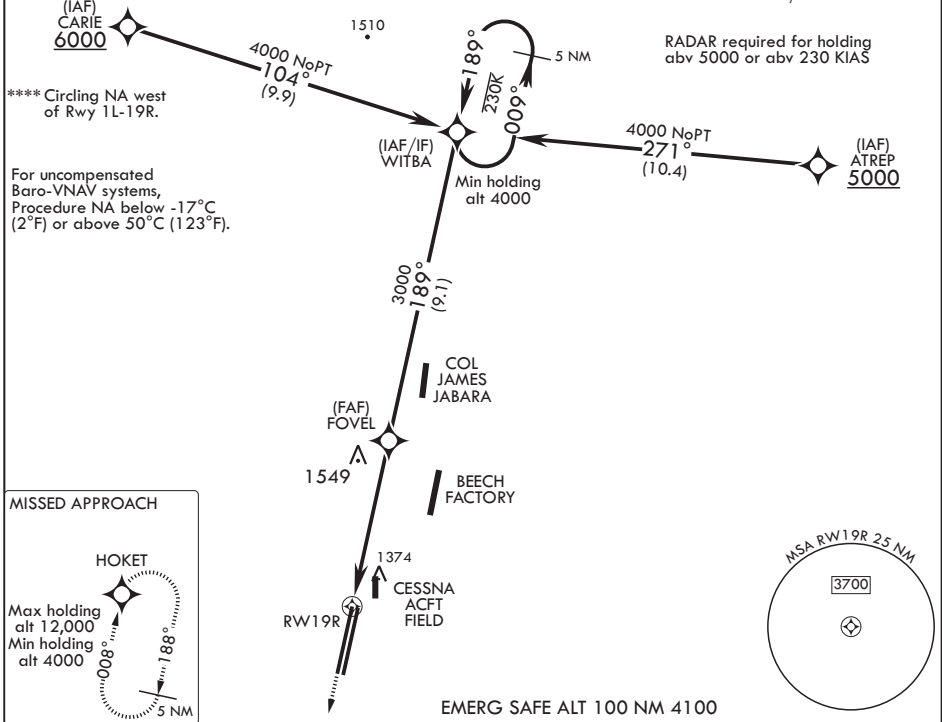
AL-453 (USAF)

MC CONNELL AFB (KIAB)

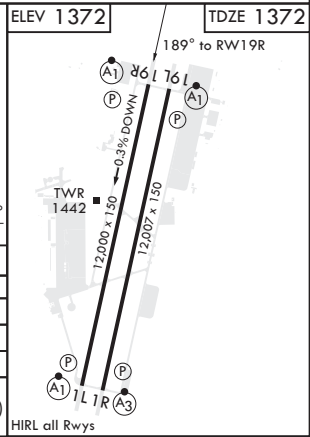
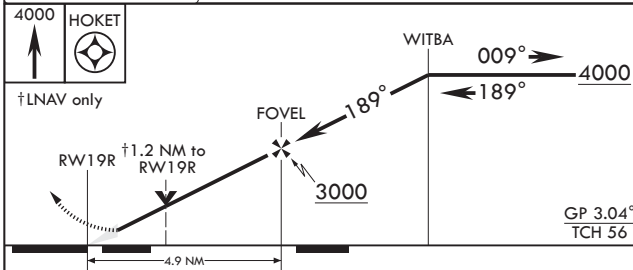
<p><b>▼</b> * When ALS inop, increase RVR to 40, vis to 3/4 mile.                  ** When ALS inop, increase vis to 1 1/4 miles.                  *** When ALS inop increase CAT AB RVR to 55, vis to 1 mile. CAT CDE vis to 1 3/8 miles.</p>	<p>ALSF-1</p>	<p>MISSED APPROACH: Climb to 4000 direct HOKET and hold.</p>
--	---------------	--

D ATIS 124.65 269.9	WICHITA APP CON 134.8 269.1	TOWER 127.25 291.775	GND CON 118.0 275.8
------------------------	--------------------------------	-------------------------	------------------------

DME/DME RNP-0.3 NA



EMERG SAFE ALT 100 NM 4100



CATEGORY LPV DA* LNAV/VNAV DA** LNAV MDA*** CIRCLING****	A	B	C	D	E
	1572/24	200	(200-1/2)		
	1748/40	376	(400-3/4)		
	1820/24 448 (500-1/2)	1820/45 448 (500-3/8)			
	1900-1 528 (600-1)	1900-1 1/2 528 (600-1/2)	2400-3 1028 (1100-3)		

WICHITA, KANSAS  
Amdt 4 10SEP20

37°37'N - 97°16'W

MC CONNELL AFB (KIAB)

# RNAV (GPS) RWY 19R

NC-2, 09 SEP 2021 to 07 OCT 2021

NC-2, 09 SEP 2021 to 07 OCT 2021