

TACAN RWY 19L

TACAN IAB Chan 112	APCH CRS 192°	Rwy ldg 12,007 TDZE 1365 Arprt Elev 1372
------------------------------	-------------------------	---

AL-453 [USAF]

MC CONNELL AFB (KIAB)

▼ * When ALS inop, increase CAT AB RVR to 55 and vis to 1 mile, CAT CDE vis to 1 3/8 miles.
 ** Circling not authorized W of Rwy 1L-19R.

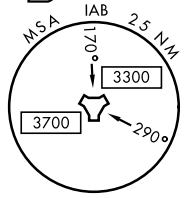
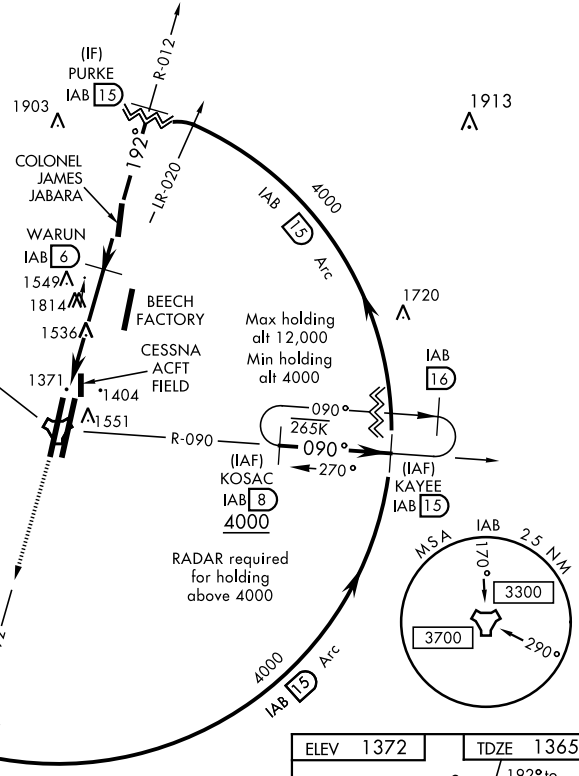
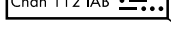
ALSF-1

MISSED APPROACH: Climb to 4000 via IAB TACAN R-192 to JILOR. Expect further clearance from ATC.

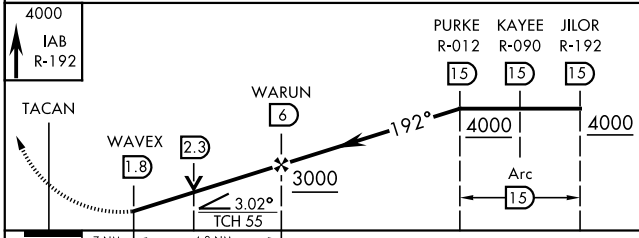
D-ATIS 124.65 269.9	WICHITA APP CON 134.8 269.1	MC CONNELL TOWER 127.25 291.775	GND CON 118.0 275.8
-------------------------------	---------------------------------------	---	-------------------------------

ATC lost communication procedures on missed approach as follows:
 At 15 DME clearance limit fix fly the 15 DME Arc to KAYEE then KOSAC and hold.

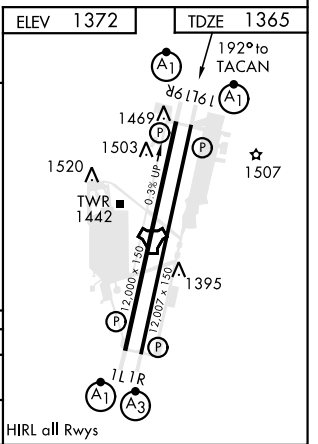
MC CONNELL
Chan 112 IAB



EMERG SAFE ALT 100 NM 4200



CATEGORY	A	B	C	D	E
S-19L *	1820/40	455 (500-3/4)	1820/45	455 (500-7/8)	
CIRCLING **	1900-1	528 (600-1)	1900-1 1/2 528 (600-1 1/2)	2400-3	1028 (1100-3)



TACAN RWY 19L

NC-2, 09 SEP 2021 to 07 OCT 2021

NC-2, 09 SEP 2021 to 07 OCT 2021