

# TACAN RWY 19R

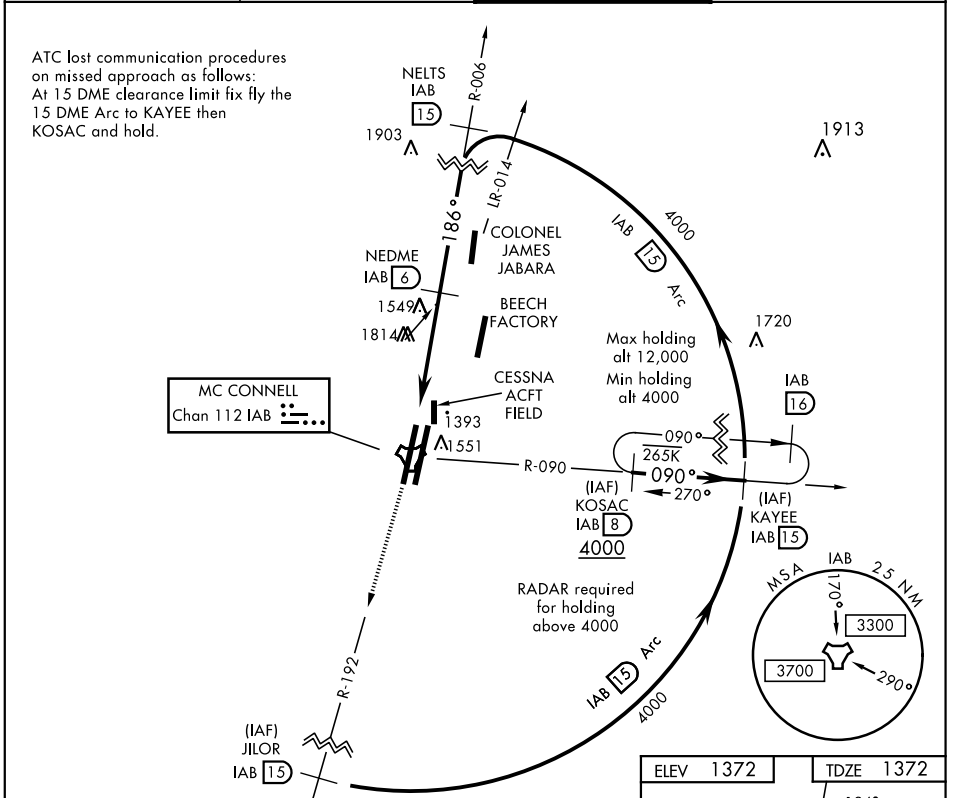
TACAN IAB Chan 112	APCH CRS 186°	Rwy Idg 12,000 TDZE 1372 Arprt Elev 1372	AL-453 [USAF]	MC CONNELL AFB (KIAB)
-----------------------	------------------	--	---------------	-----------------------

▼ \* When ALS inop, increase CAT AB RVR to 55 and vis to 1 mile, CAT CDE vis to 1 3/8 miles.  
 \*\* Circling not authorized W of Rwy 1L-19R.

ALSF-1  
A1

**MISSED APPROACH:** Climb to 4000 via IAB TACAN R-192 to 15 DME (JILOR). Expect further clearance from ATC.

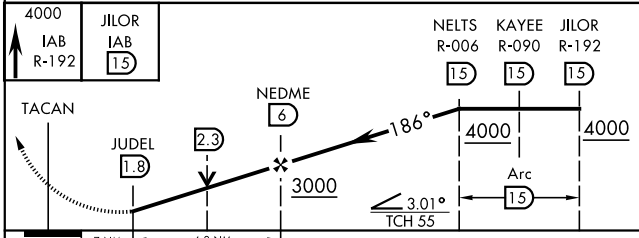
D-ATIS <b>124.65 269.9</b>	WICHITA APP CON <b>134.8 269.1</b>	MC CONNELL TOWER <b>127.25 291.775</b>	GND CON <b>118.0 275.8</b>
-------------------------------	---------------------------------------	---	-------------------------------



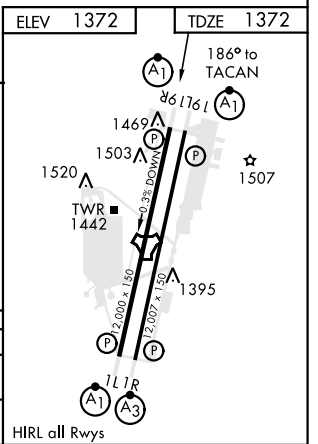
NC-2, 09 SEP 2021 to 07 OCT 2021

NC-2, 09 SEP 2021 to 07 OCT 2021

EMERG SAFE ALT 100 NM 4200



CATEGORY	A	B	C	D	E
S-19R *	1820/24 448 (500-1/2)		1820/45 448 (500-7/8)		
<span style="border: 1px solid black; border-radius: 50%; padding: 2px;">C</span> IRCLING **	1900-1 528 (600-1)		1900-1 1/2 528 (600-1 1/2)	2400-3 1028 (1100-3)	



# TACAN RWY 19R