

WICHITA, KANSAS

TACAN RWY 1R

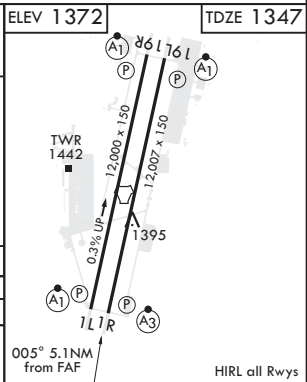
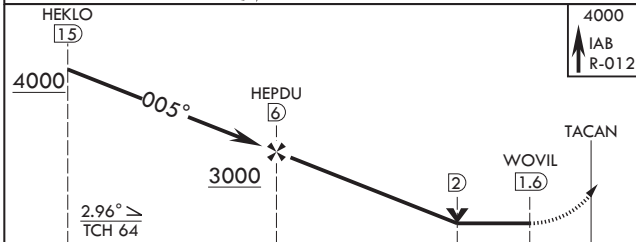
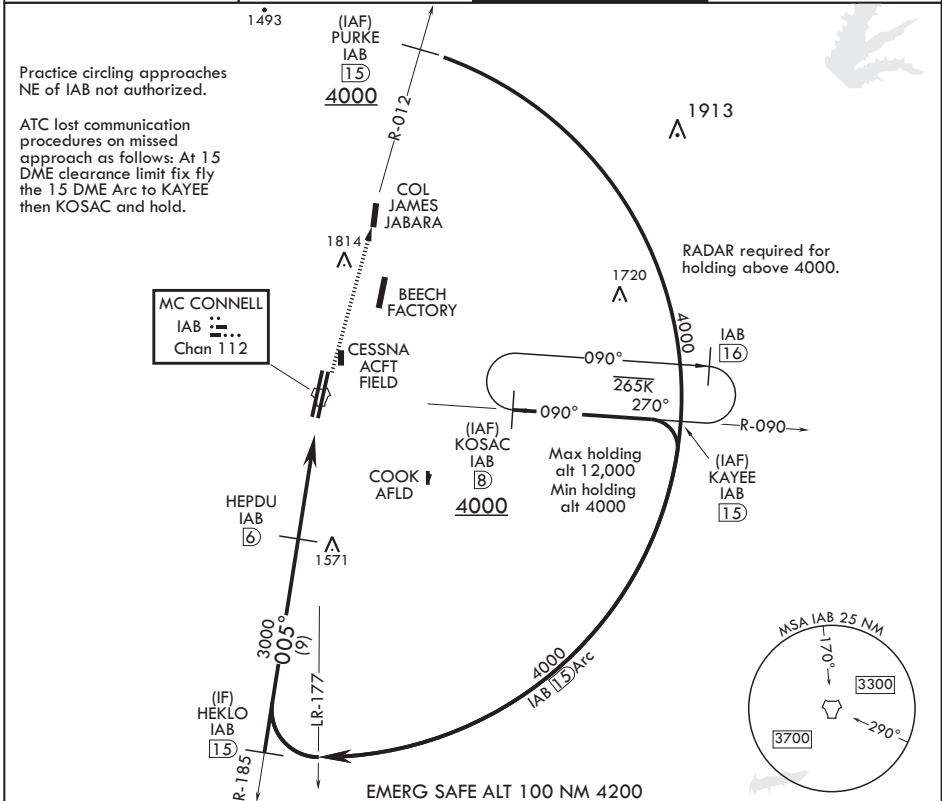
TACAN IAB Chan 112	APCH CRS 005°	Rwy Idg TDZE Arpt Elev	12,007 1347 1372
-----------------------	------------------	------------------------------	------------------------

AL-453 (USAF)

MC CONNELL AFB (KIAB)

SSALR MISSED APPROACH: Climb to 4000 via IAB TACAN R-012 to PURKE. Expect further clearance from ATC.
 * When ALS inop, increase CAT AB RVR to 55 and vis to 1 mile, CAT CDE vis to 1 1/4 miles.
 ** Circling not authorized W of Rwy 1L-19R.

D ATIS 124.65 269.9	WICHITA APP CON 134.8 269.1	TOWER 127.25 291.775	GND CON 118.0 275.8
------------------------	--------------------------------	-------------------------	------------------------



CATEGORY	A	B	C	D	E
S-1R*	1760/40		413	(400-3/4)	
C CIRCLING**	1900-1 528 (600-1)	1900-1 1/2 528 (600-1 1/2)	2400-3 1028 (1100-3)		

WICHITA, KANSAS
Amdt 6 10SEP20

37°37'N - 97°16'W

MC CONNELL AFB (KIAB)
TACAN RWY 1R

NC-2, 09 SEP 2021 to 07 OCT 2021

NC-2, 09 SEP 2021 to 07 OCT 2021