

WAAS CH <b>45824</b> <b>W25A</b>	APP CRS <b>246°</b>	Rwy Idg <b>3375</b> TDZE <b>543</b> Apt Elev <b>543</b>
--	------------------------	---

# RNAV (GPS) RWY 25

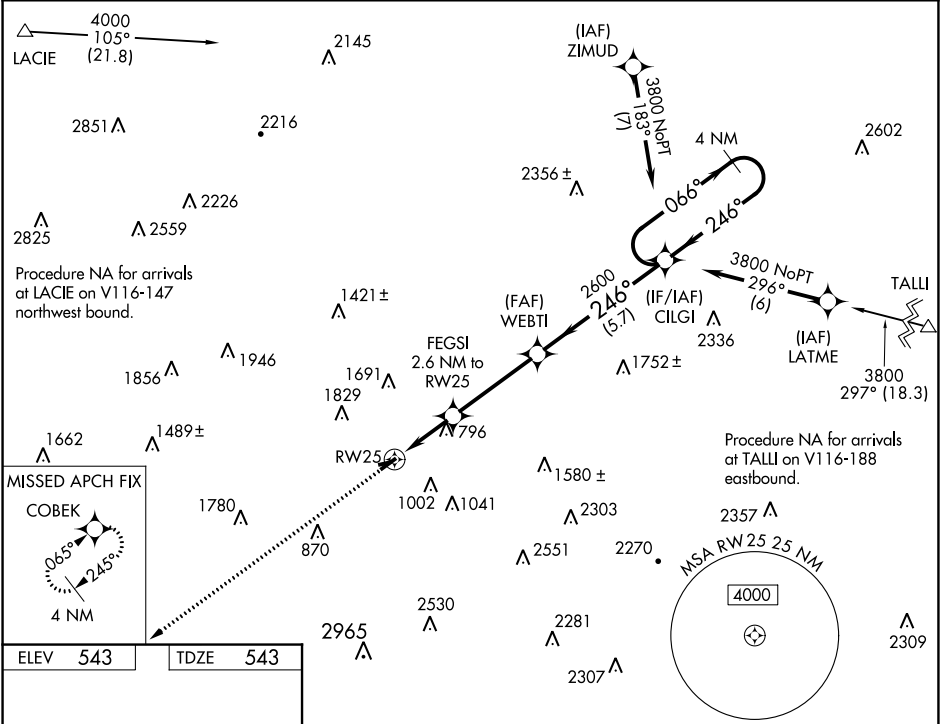
WILKES-BARRE WYOMING VALLEY (WBW)

RNP APCH.

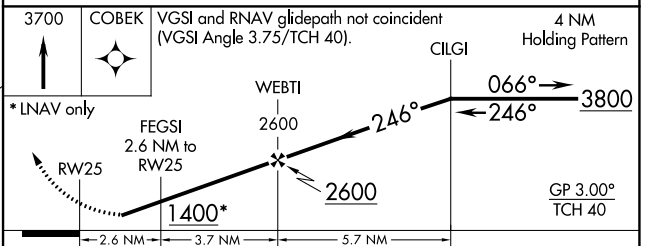
**∇** Circling NA to Rws 9 and 27. Rwy 25 helicopter visibility reduction below ¼ SM NA.  
**▲** Baro-VNAV NA. Use Wilkes-Barre/Scranton altimeter setting. Circling Rwy 7 NA at night.  
**▲** NA Circling NA NW of Rwy 7-25.

**MISSED APPROACH:**  
 Climb to 3700 direct COBEK and hold.

AVP ASOS <b>111.6</b>	WILKES-BARRE APP CON <b>126.3 256.7</b>	UNICOM <b>122.8 (CTAF) 0</b>
--------------------------	--	---------------------------------



ELEV <b>543</b>	TDZE <b>543</b>
-----------------	-----------------



CATEGORY	A	B	C	D
LPV DA	1063-1½	520 (600-1½)		NA
LNAV/VNAV DA	1184-2¼	641 (700-2¼)		NA
LNAV MDA	1240-1	697 (700-1)		NA
CIRCLING	1280-1	1380-1¼		NA
	737 (800-1)	837 (900-1¼)		

NE-4, 09 SEP 2021 to 07 OCT 2021

NE-4, 09 SEP 2021 to 07 OCT 2021