

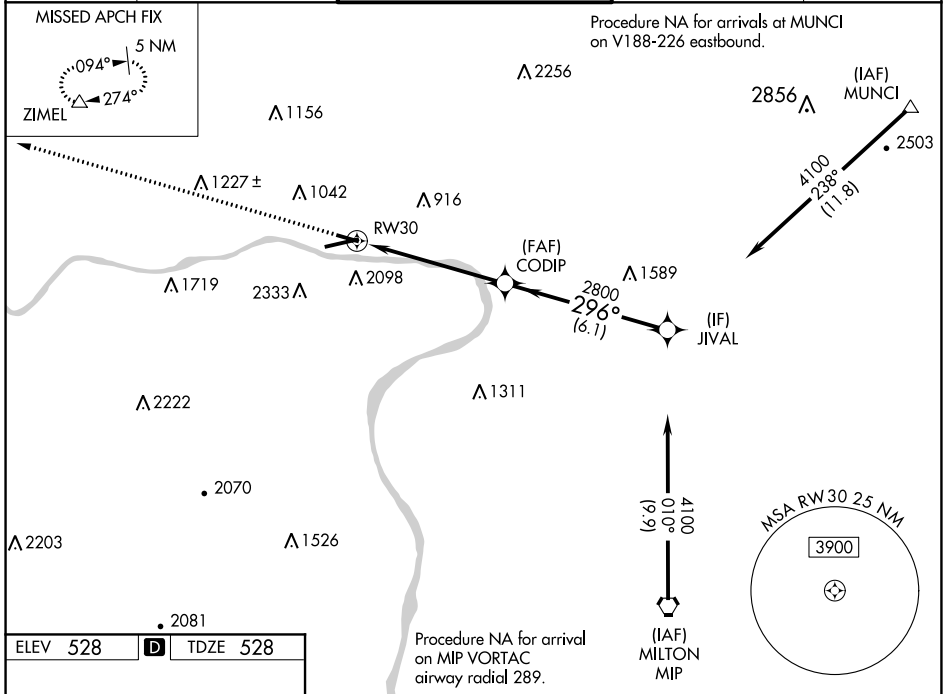
WAAS CH 93724 W30A	APP CRS 296°	Rwy Idg TDZE Apt Elev	4273 528 528
--	------------------------	-----------------------------	---

RNAV (GPS) RWY 30

WILLIAMSPORT RGNL (IPT)

 -14°C	DME/DME RNP-0.3 NA. Helicopter visibility reduction below 1 SM NA. Circling NA south of Rwy 9 and southwest of Rwy 30. Night landing: Rwy 12, 30 NA.	MISSED APPROACH: Climb to 4500 direct ZIMEL and hold, continue climb-in-hold to 4500.
-------------------	--	---

ASOS 125.225	NEW YORK CENTER 124.9	WILLIAMSPORT TOWER ★ 119.1 (CTAF) 257.8	GND CON 121.9	UNICOM 122.95
------------------------	---------------------------------	---	-------------------------	-------------------------

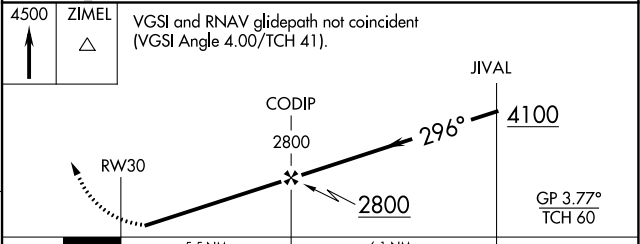


ELEV 528	D	TDZE 528
----------	----------	----------

REIL Rwy 9

MIRL Rwy 12-30

HIRL Rwy 9-27



CATEGORY	A	B	C	D
LPV DA	843-1	315 (400-1)		NA
LNAV/VNAV DA	2212-5	1684 (1700-5)		NA
LNAV MDA	2020-1¼ 1492 (1500-1½)	2020-1½ 1492 (1500-1½)		NA
CIRCLING	2020-1¼ 1492 (1500-1½)	2020-1½ 1492 (1500-1½)		NA

NE-4, 09 SEP 2021 to 07 OCT 2021

NE-4, 09 SEP 2021 to 07 OCT 2021