

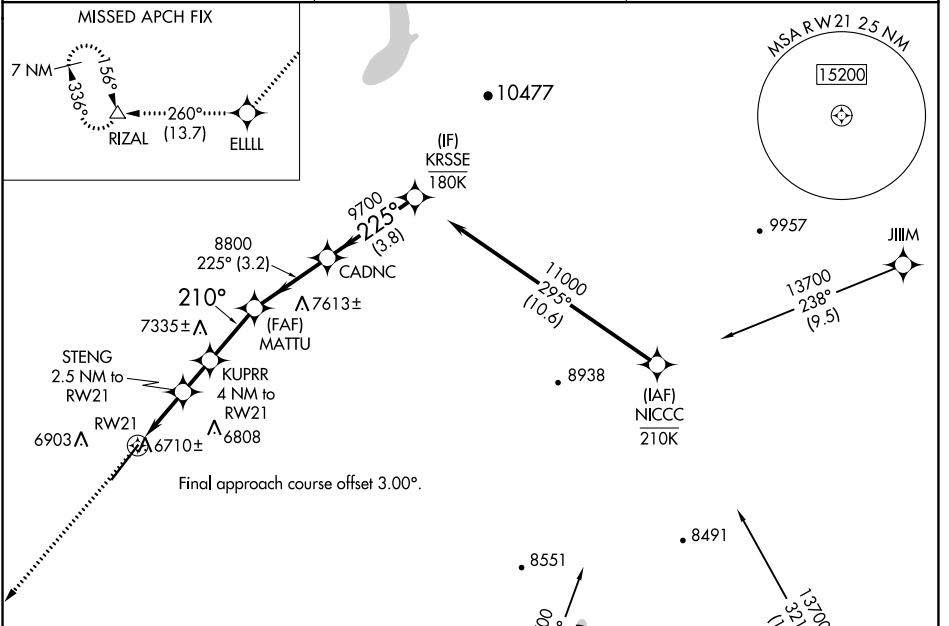
APP CRS	Rwy Idg	<b>9201</b>
<b>210°</b>	TDZE	<b>6689</b>
	Apt Elev	<b>6689</b>

# RNAV (GPS) RWY 21

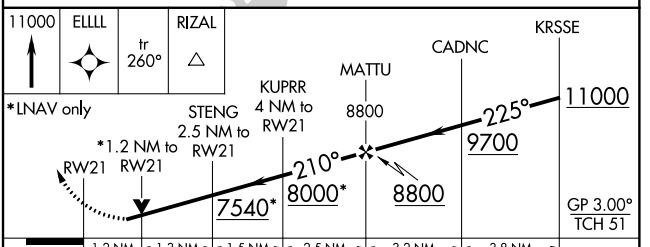
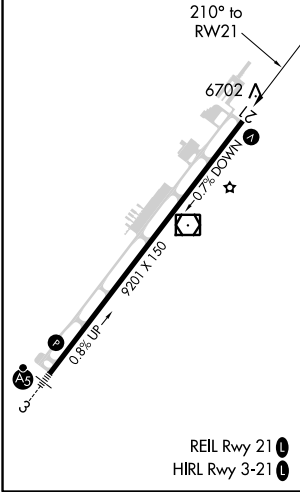
DURANGO-LA PLATA COUNTY (D.R.O)

RNP APCH.	MISSED APPROACH: Climb to 11000 direct ELLLL and on track 260° to RIZAL and hold.
<p><b>▽</b> Rwy 21 helicopter visibility reduction below 3/4 SM NA. For uncompensated Baro-VNAV systems, LNAV/VNAV NA below -20°C or above 54°C.</p>	

ASOS <b>120.625</b>	DENVER CENTER <b>118.575 348.7</b>	UNICOM <b>122.8 (CTAF) 0</b>
------------------------	---------------------------------------	---------------------------------



ELEV 6689	<b>D</b>	TDZE 6689
-----------	----------	-----------



CATEGORY	A	B	C	D
LNAV/VNAV DA	7019-1 330 (400-1)			
LNAV MDA	7120-1	431 (500-1)	7120-1 1/4	431 (500-1 1/4)
<b>C</b> CIRCLING	7160-1 471 (500-1)	7220-1 531 (600-1)	7540-2 1/2 851 (900-2 1/2)	8140-3 1451 (1500-3)

SW-1, 09 SEP 2021 to 07 OCT 2021

SW-1, 09 SEP 2021 to 07 OCT 2021