


WAAS CH <b>53710</b> <b>W03A</b>	APP CRS <b>027°</b>	Rwy Idg <b>9201</b> TDZE <b>6643</b> Apt Elev <b>6689</b>
--	------------------------	---

# RNAV (GPS) RWY 3

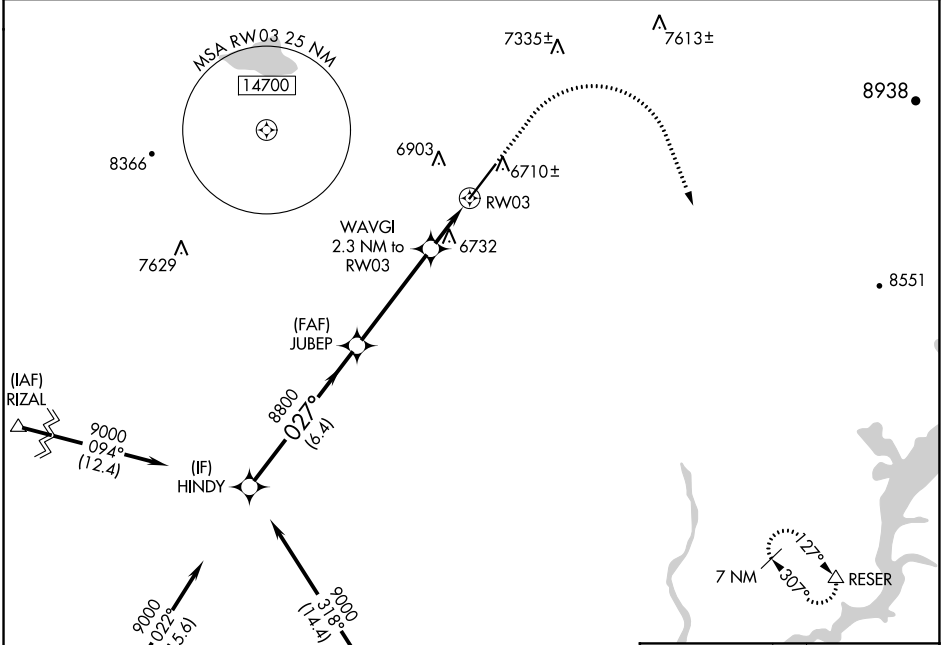
DURANGO-LA PLATA COUNTY (D.R.O)

**⚠** For uncompensated Baro-VNAV systems, LNAV/VNAV NA below -26°C (-14°F) or above 44°C (111°F). DME/DME RNP-0.3 NA. For inop MALS, increase LNAV Cat C/D visibility to 1 mile.

**MALS** 

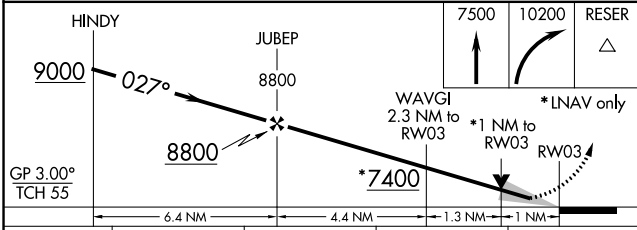
**MISSED APPROACH:** Climb to 7500 then climbing right turn to 10200 direct RESER and hold.


ASOS <b>120.625</b>	DENVER CENTER <b>118.575 348.7</b>	UNICOM <b>122.8 (CTAF)</b> 
------------------------	---------------------------------------	---

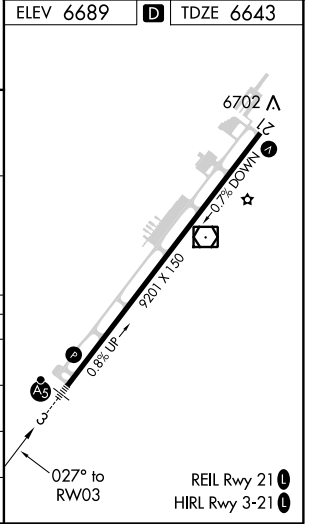


ELEV 6689  TDZE 6643

Procedure NA for arrivals on RSK VORTAC airway radials 316 CW 057.



CATEGORY	A	B	C	D
LPV DA		6843-1/2	200 (200-1/2)	
LNAV/VNAV DA		6918-1/2	275 (300-1/2)	
LNAV MDA	7000-1/2	357 (400-1/2)	7000-5/8	357 (400-5/8)
 CIRCLING	7160-1	7220-1	7540-2 1/2	8140-3
	471 (500-1)	531 (600-1)	851 (900-2 1/2)	1451 (1500-3)



SW-1, 09 SEP 2021 to 07 OCT 2021

SW-1, 09 SEP 2021 to 07 OCT 2021