

WAAS CH 81813 W31A	APP CRS 309°	Rwy Idg TDZE Apt Elev	5997 174 178
--	------------------------	-----------------------------	---

RNAV (GPS) RWY 31

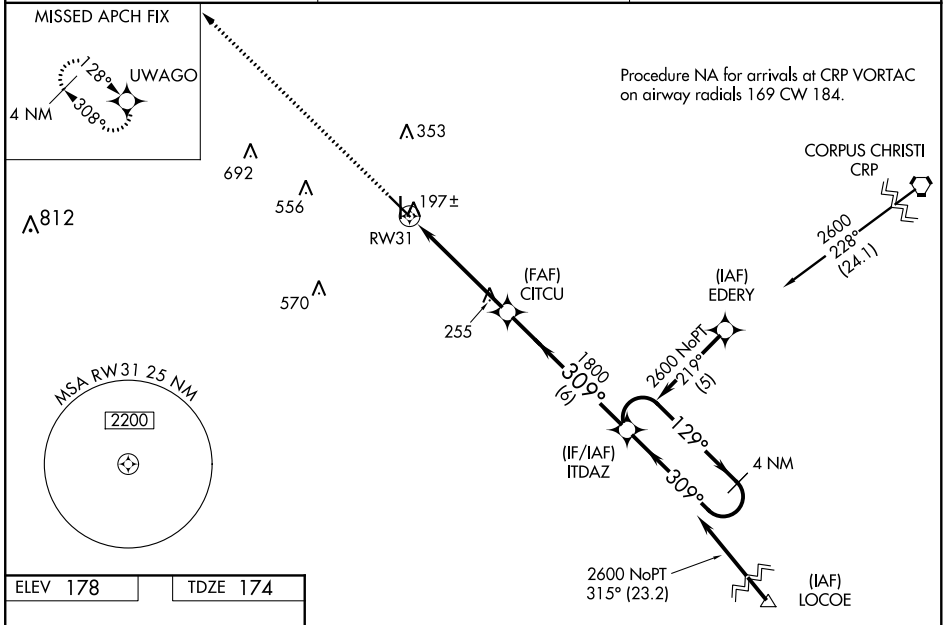
ALICE INTL (ALI)

▼ For uncompensated Baro-VNAV systems, LNAV/VNAV NA below -15°C (5°F) or above 48°C (118°F). DME/DME RNP-0.3 NA. Visibility reduction by helicopters NA. When local altimeter setting not received, use Nueces County altimeter setting: Increase LPV DA to 493 feet, LNAV/VNAV DA to 523 feet and LNAV/VNAV all Cats visibility to ¾ SM; increase all MDA 60 feet and LNAV Cat C and D and Circling Cat D visibility ¼ SM. For inop MALS, increase LPV all Cats visibility to ¾ mile. For inop MALS with Nueces County altimeter setting, increase LNAV/VNAV all Cats and LNAV Cats C, D visibility to 1½ mile. VDP NA when using Nueces County altimeter setting.

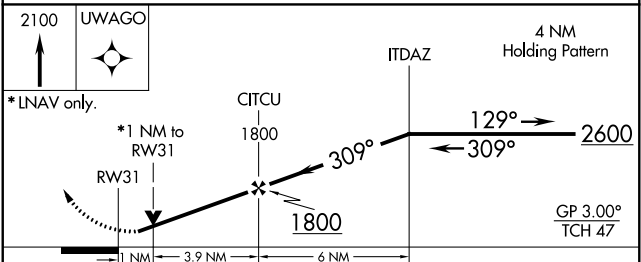
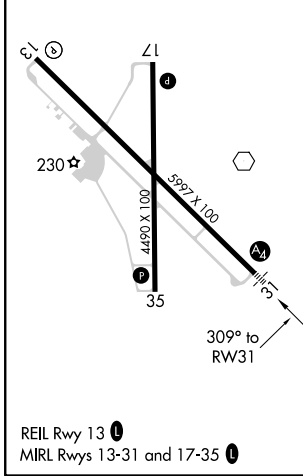


MALS
MISSED APPROACH:
Climb to 2100 direct
UWAGO and hold.

ASOS 119.225	KINGSVILLE APP CON ★ 119.9 290.45	UNICOM 123.0 (CTAF) 1
------------------------	---	--



ELEV 178	TDZE 174
----------	----------



CATEGORY	A	B	C	D
LPV DA		437-¾	263 (300-¾)	
LNAV/VNAV DA		467-¾	293 (300-¾)	
LNAV MDA		520-¾	346 (400-¾)	
CIRCLING	600-1 422 (500-1)	640-1 462 (500-1)	680-1½ 502 (600-1½)	900-2¼ 722 (800-2¼)

SC-3, 09 SEP 2021 to 07 OCT 2021

SC-3, 09 SEP 2021 to 07 OCT 2021