


VOR ALI <b>114.5</b>	APP CRS <b>325°</b>	Rwy Idg <b>5997</b>
		TDZE <b>174</b>
		Apt Elev <b>178</b>

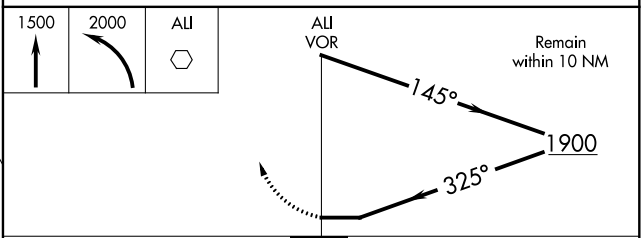
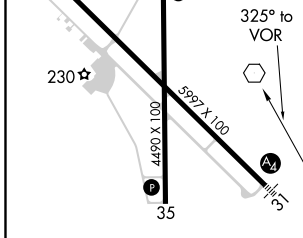
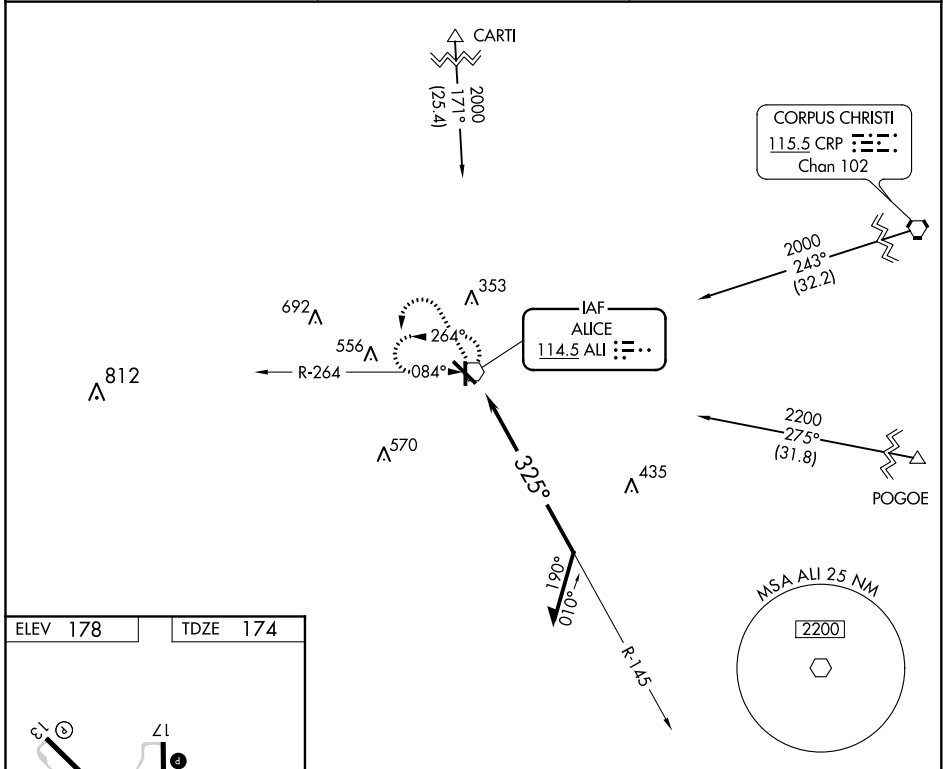
# VOR RWY 31

ALICE INTL (ALI)

**⚠** When local altimeter setting not received, use Nueces County altimeter setting: Increase all MDA 60 feet and visibility S-31 Cats C and D and Circling Cat D ¼ SM. Visibility reduction by helicopters NA. For inop ALS when using Nueces County altimeter setting, increase S-31 Cats C, D visibility to 1 ½ SM. For inop ALS, increase S-31 Cats C, D visibility to 1 ¾ SM.

**MALS**  
 MISSED APPROACH: Climb to 1500 then climbing left turn to 2000 direct ALI VOR and hold.

ASOS <b>119.225</b>	KINGSVILLE APP CON ★ <b>119.9 290.45</b>	UNICOM <b>123.0 (CTAF) ①</b>
------------------------	---	---------------------------------



ELEV 178	TDZE 174	<table border="1"> <tr> <td>1500</td> <td>2000</td> <td>ALI</td> <td colspan="2"></td> </tr> <tr> <td>↑</td> <td>↶</td> <td>⬡</td> <td colspan="2"></td> </tr> </table>				1500	2000	ALI			↑	↶	⬡		
1500	2000	ALI													
↑	↶	⬡													
		REIL Rwy 13 ①	MIRL Rwy 13-31 and 17-35 ①												
CATEGORY	A	B	C	D											
S-31	620-¾	446 (500-¾)	620-1	446 (500-1)											
CIRCLING	620-1	640-1	680-1½	900-2¼	446 (500-1) 722 (800-2¼)										

SC-3, 09 SEP 2021 to 07 OCT 2021

SC-3, 09 SEP 2021 to 07 OCT 2021