


WAAS CH 63103 W35A	APP CRS 351°	Rwy Idg TDZE Apt Elev	7299 2885 2891
--	------------------------	-----------------------------	---

RNAV (GPS) RWY 35

GARDEN CITY RGNL (GCK)

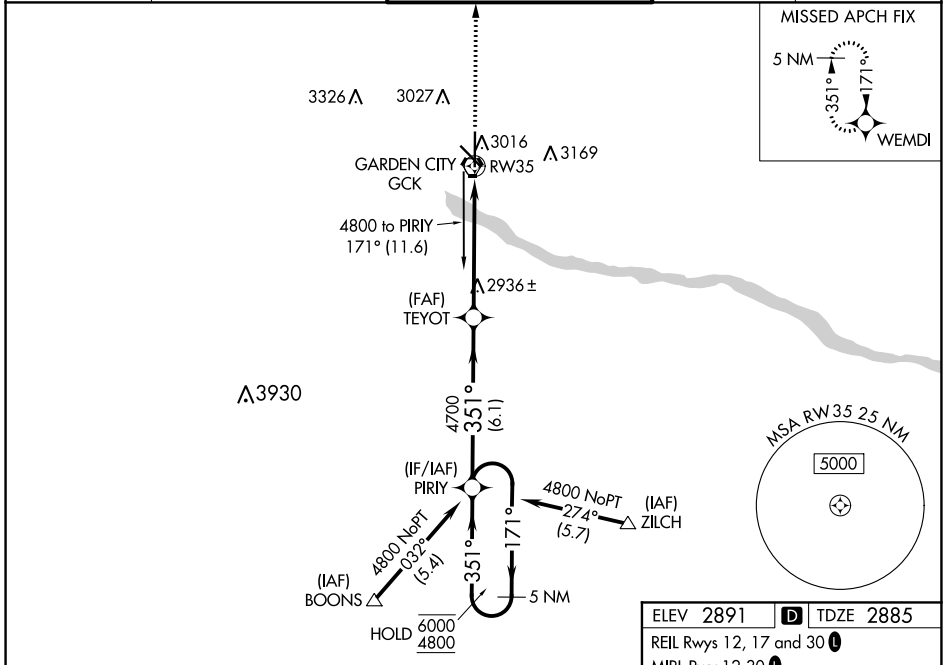
RNP APCH.

⚠ For uncompensated Baro-VNAV systems, LNAV/VNAV NA below -20°C or above 43°C. For inop ALS, increase LNAV/VNAV all Cats visibility to ¾ SM, and LNAV Cat C visibility to ⅞ SM. Inop table does not apply to LNAV Cat D.

MALSR 

MISSED APPROACH: Climb to 4700 direct WEMDI and hold.

ASOS 121.325	KANSAS CITY CENTER 125.2 269.4	GARDEN CITY TOWER * 118.15 (CTAF) 0 254.4	GND CON 119.0 254.4	UNICOM 122.95
------------------------	--	---	-------------------------------	-------------------------



5 NM Holding Pattern

VGSI and RNAV glidepath not coincident (VGSI Angle 3.00/TCH 41).

4700 WEMDI

GP 3.00° TCH 59

6000 ← 171°

4800 → 351°

351°

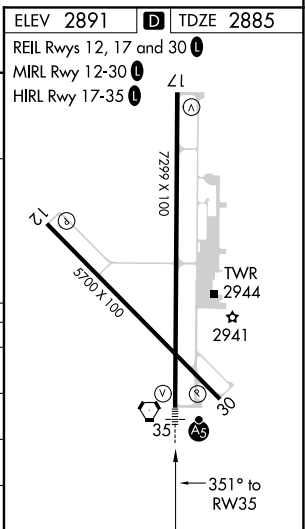
4700

*0.9 NM to RW35

*LNAV only

6.1 NM 4.6 NM 0.9 NM

CATEGORY	A	B	C	D
LPV DA	3135-½ 250 (300-½)			
LNAV/VNAV DA	3169-½ 284 (300-½)		3169-¾ 284 (300-¾)	
LNAV MDA	3200-½ 315 (400-½)		3200-1 315 (400-1)	
CIRCLING	3320-1 429 (500-1)	3360-1 469 (500-1)	3480-1½ 589 (600-1½)	3480-2 589 (600-2)



NC-2, 09 SEP 2021 to 07 OCT 2021

NC-2, 09 SEP 2021 to 07 OCT 2021