

LOC/DME I-FMN 111.9 Chan 56	APP CRS 256°	Rwy Idg TDZE Apt Elev	6248 5507 5507
--	------------------------	-----------------------------	---

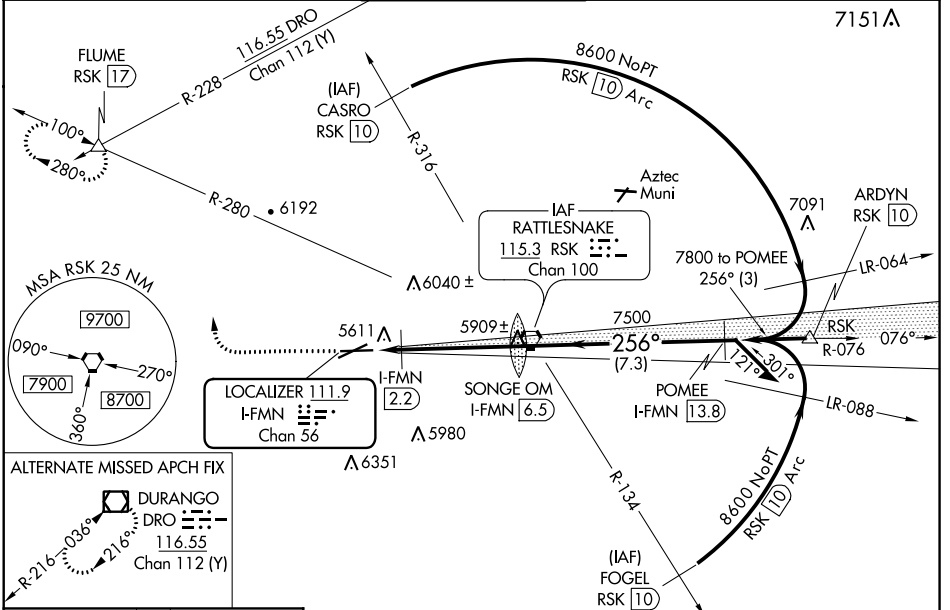
ILS or LOC RWY 25

FOUR CORNERS RGNL (FMN)

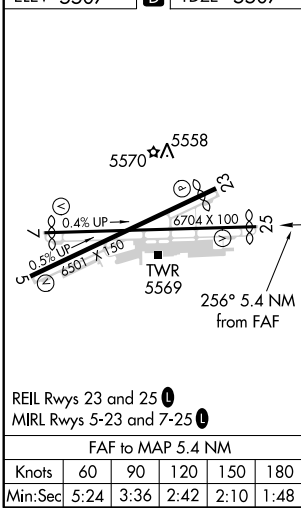
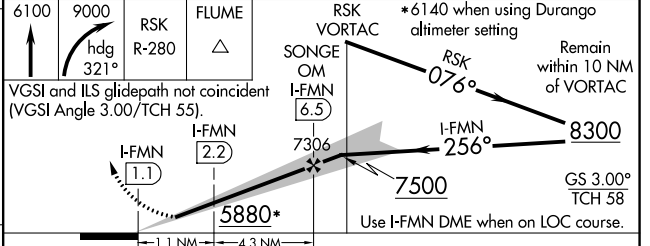
⚠ Circling NA for Cat D southeast of Rwy 5 and south of Rwy 25. When local altimeter setting not received, use Durango altimeter setting: increase DA to 5950 feet and all visibilities ½ SM; increase all MDA 260 feet and S-LOC 25 and Circling visibility Cats C and D ¾ SM; increase DME minimums: S-LOC 25 visibility Cats C and D and Circling Cats A/B/C ½ SM

MISSED APPROACH: Climb to 6100 then climbing right turn to 9000 via heading 321° and RSK R-280 to FLUME INT and hold.

ATIS 127.15	DENVER CENTER 118.575 348.7	FARMINGTON TOWER* 118.9 (CTAF) 257.8	GND CON 121.7	UNICOM 122.95
-----------------------	---------------------------------------	---	-------------------------	-------------------------



ELEV 5507 **D** TDZE 5507



CATEGORY	A	B	C	D
S-ILS 25		5707-¾	200 (200-¾)	
S-LOC 25		5880-1	373 (400-1)	
CIRCLING	6100-1 593 (600-1)	6180-1 673 (700-1)	6380-2½ 873 (900-2½)	6460-3 953 (1000-3)
DME MINIMUMS				
S-LOC 25	5780-1	273 (300-1)	5780-7/8	273 (300-7/8)
CIRCLING	6100-1 593 (600-1)	6180-1 673 (700-1)	6380-2½ 873 (900-2½)	6460-3 953 (1000-3)

SW-1, 09 SEP 2021 to 07 OCT 2021

SW-1, 09 SEP 2021 to 07 OCT 2021