

WAAS CH <b>70714</b> <b>W23A</b>	APP CRS <b>233°</b>	Rwy Idg TDZE Apt Elev	<b>5590</b> <b>5505</b> <b>5507</b>
--	------------------------	-----------------------------	---

# RNAV (GPS) RWY 23

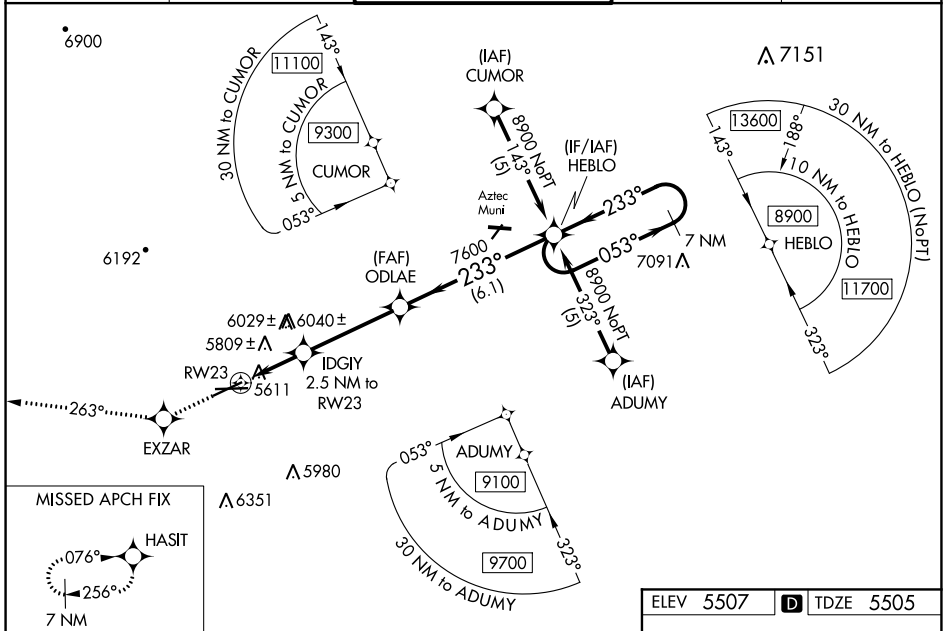
FOUR CORNERS RGNL (FMN)

RNP APCH-GPS.

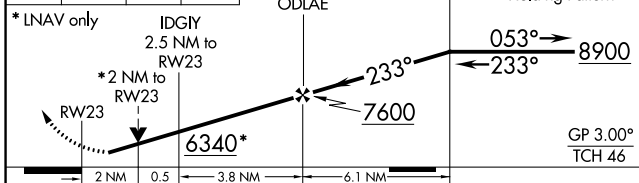
**⚠** For uncompensated Baro-VNAV systems, LNAV/VNAV NA below -25°C or above 54°C.  
**⚠** Circling NA for Cat D southeast of Rwy 5 and south of Rwy 25. When local altimeter setting not received, use Durango altimeter setting and increase LPV DA to 6042 feet and all visibilities 5/8 SM and increase LNAV/VNAV DA to 6382 feet and all visibilities 2/4 SM; increase all MDAs 260 feet and visibility LNAV all Cats and Circling Cats A/B/C 3/8 SM.

**MISSED APPROACH:**  
 Climb to 8000 direct EXZAR and via track 263° to HASIT and hold.

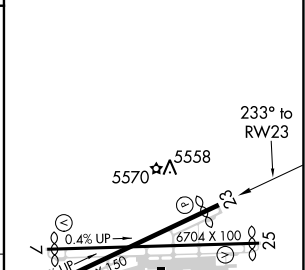
ATIS <b>127.15</b>	DENVER CENTER <b>118.575 348.7</b>	FARMINGTON TOWER* <b>118.9 (CTAF) 0 257.8</b>	GND CON <b>121.7</b>	UNICOM <b>122.95</b>
-----------------------	---------------------------------------	--	-------------------------	-------------------------



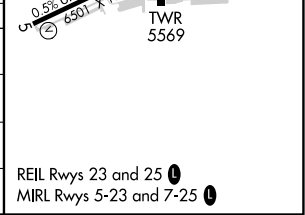
8000	EXZAR	HASIT	* 6500 when using Durango altimeter setting.
↑	✦	✦	
	tr 263°		



ELEV 5507	<b>D</b> TDZE 5505
-----------	--------------------



CATEGORY	A	B	C	D
LPV DA		5799-7/8	294 (300-7/8)	
LNAV/VNAV DA		6139-13/4	634 (700-13/4)	
LNAV MDA	6180-1	675 (700-1)	6180-17/8	675 (700-17/8)
CIRCLING	6180-1	673 (700-1)	6380-2 1/2 873 (900-2 1/2)	6460-3 953 (1000-3)



SW-1, 09 SEP 2021 to 07 OCT 2021

SW-1, 09 SEP 2021 to 07 OCT 2021