

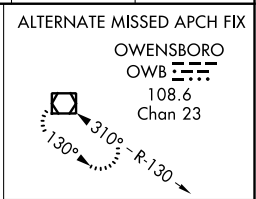
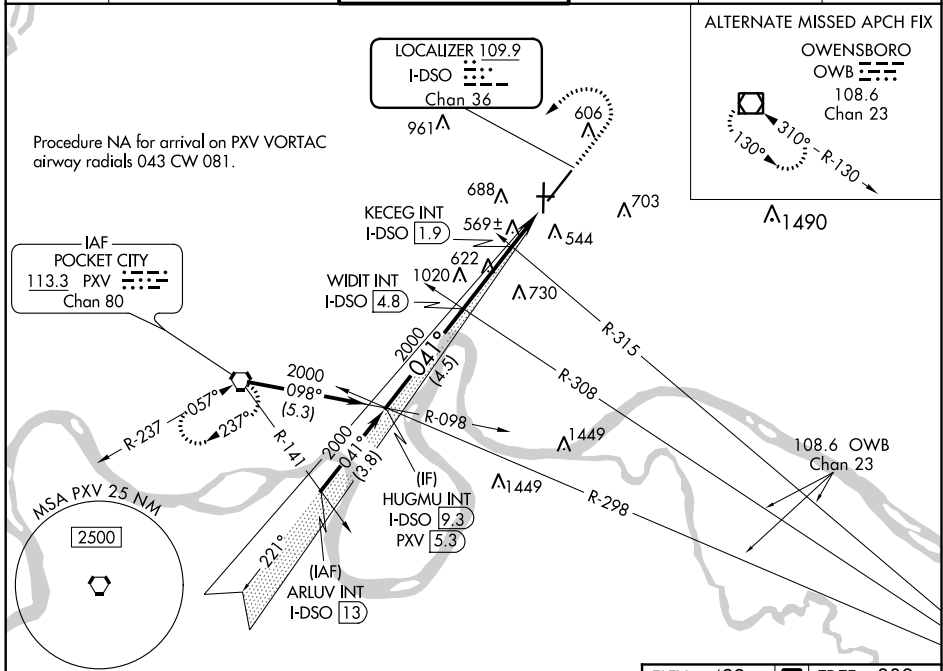
LOC/DME I-DSO <b>109.9</b> Chan <b>36</b>	APP CRS <b>041°</b>	Rwy Idg TDZE Apt Elev	<b>8021</b> <b>389</b> <b>422</b>
---	------------------------	-----------------------------	---

# ILS or LOC RWY 4

EVANSVILLE RGNL (EVV)

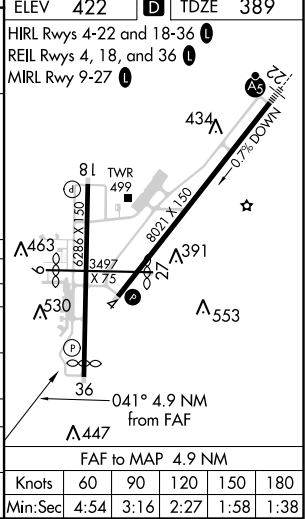
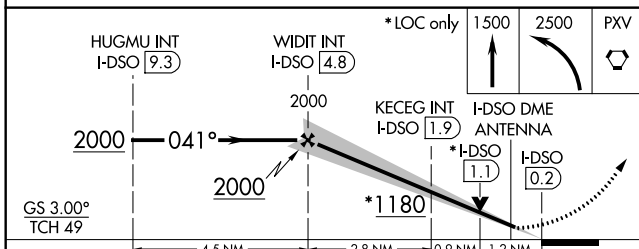
**ASR** Circling Rwy 9 NA at night. MISSED APPROACH: Climb to 1500 then climbing left turn to 2500 direct PXV VORTAC and hold.

ATIS <b>120.2</b>	EVANSVILLE APP CON ★ <b>124.025 290.9</b>	EVANSVILLE TOWER ★ <b>118.7 (CTAF) 257.8</b>	GND CON <b>121.9</b>	CLNC DEL <b>126.6</b>	UNICOM <b>122.95</b>
----------------------	--	---	-------------------------	--------------------------	-------------------------



EC-2, 09 SEP 2021 to 07 OCT 2021

EC-2, 09 SEP 2021 to 07 OCT 2021



CATEGORY	A	B	C	D
S-ILS 4		589-3/4	200 (200-3/4)	
S-LOC 4	1180-1 791 (800-1)	1180-1 1/4 791 (800-1 1/4)	1180-2 1/2	791 (800-2 1/2)
<b>C</b> CIRCLING	1180-1 758 (800-1)	1180-1 1/4 758 (800-1 1/4)	1180-2 1/2	758 (800-2 1/2)
KECEG FIX MINIMUMS (DUAL VOR RECEIVERS OR DME REQUIRED)				
S-LOC 4	820-1	431 (500-1)	820-1 1/4	431 (500-1 1/4)
<b>C</b> CIRCLING	920-1 498 (500-1)	1040-1 618 (700-1)	1040-1 3/4 618 (700-1 3/4)	1040-2 618 (700-2)

Knots	60	90	120	150	180
Min:Sec	4:54	3:16	2:27	1:58	1:38