

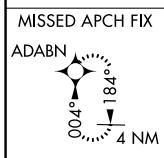
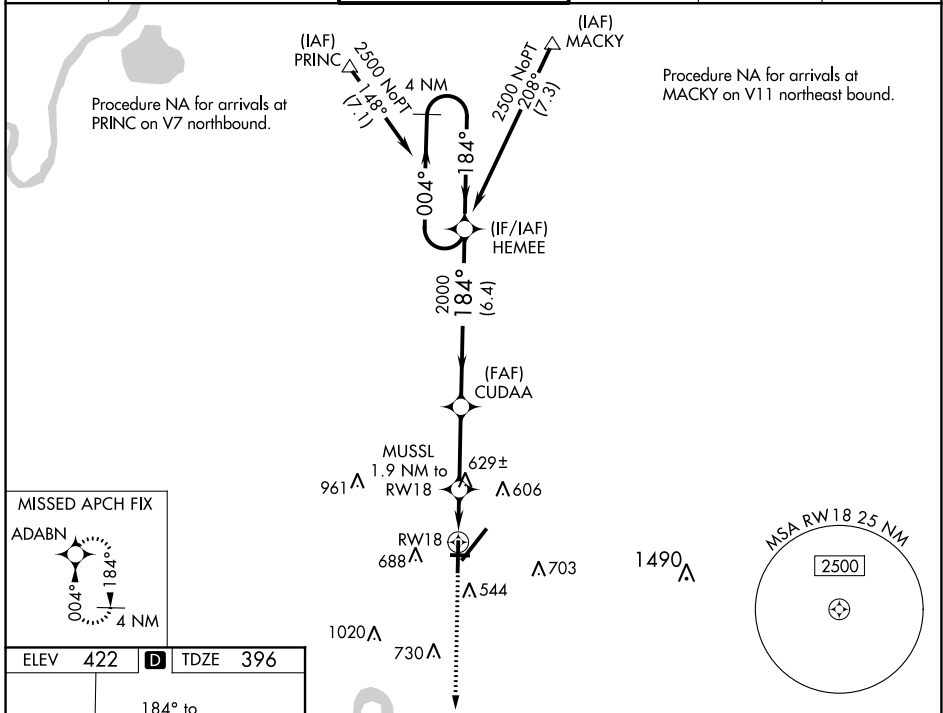
WAAS CH 50421 W18A	APP CRS 184°	Rwy Idg TDZE Apt Elev	5497 396 422
--	------------------------	-----------------------------	---

RNAV (GPS) RWY 18

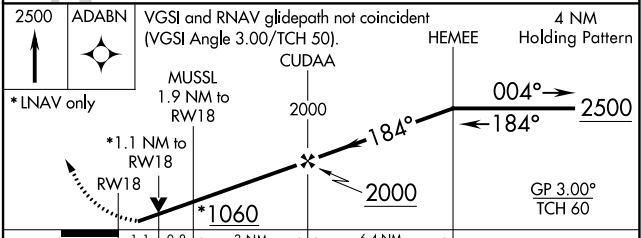
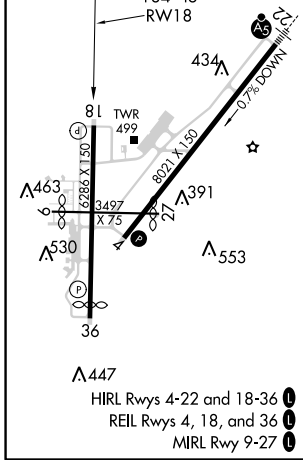
EVANSVILLE RGNL (EVV)

ASR	For uncompensated Baro-VNAV systems, LNAV/VNAV NA below -15°C (5°F) or above 54°C (130°F). DME/DME RNP-0.3 NA. Circling Rwy 9 NA at night. Helicopter visibility reduction below ¾ SM NA.	MISSED APPROACH: Climb to 2500 direct ADABN and hold.
-----	---	--

ATIS 120.2	EVANSVILLE APP CON ★ 124.025 290.9	EVANSVILLE TOWER ★ 118.7(CTAF) 257.8	GND CON 121.9	CLNC DEL 126.6	UNICOM 122.95
----------------------	--	--	-------------------------	--------------------------	-------------------------



ELEV 422	D	TDZE 396
----------	----------	----------



CATEGORY	A	B	C	D
LPV DA		596-¾	200 (200-¾)	
LNAV/VNAV DA		931-1¾	535 (600-1¾)	
LNAV MDA	880-1	484 (500-1)	880-1¾	484 (500-1¾)
C CIRCLING	920-1 498 (500-1)	1040-1 618 (700-1)	1040-1¾ 618 (700-1¾)	1040-2 618 (700-2)

EC-2, 09 SEP 2021 to 07 OCT 2021

EC-2, 09 SEP 2021 to 07 OCT 2021