

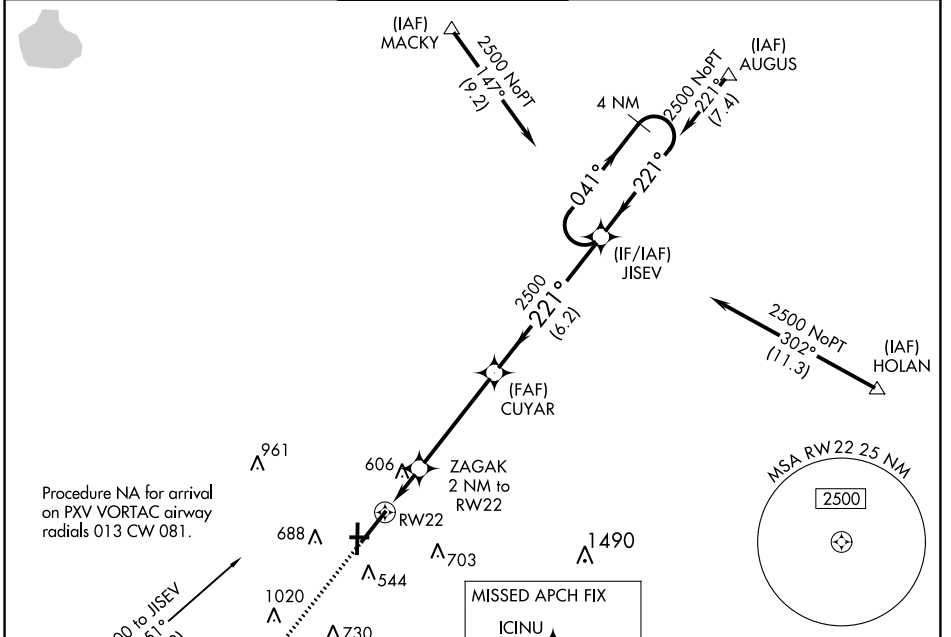
WAAS CH <b>42512</b> <b>W22A</b>	APP CRS <b>221°</b>	Rwy Idg TDZE Apt Elev	<b>8021</b> <b>422</b> <b>422</b>
--	------------------------	-----------------------------	---

# RNAV (GPS) RWY 22

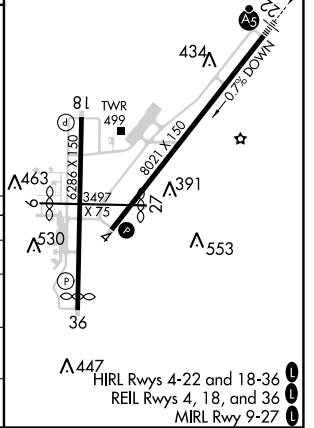
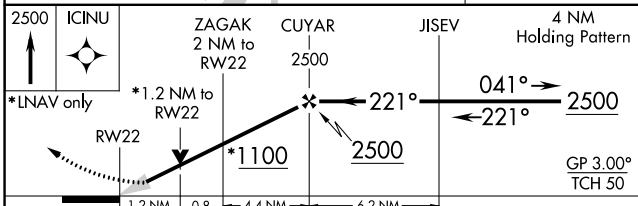
EVANSVILLE RGNL (EVV)

<b>ASR</b> For uncompensated Baro-VNAV systems, LNAV/VNAV NA below -1.5°C (5°F) or above 54°C (130°F). DME/DME RNP-0.3 NA. Circling Rwy 9 NA at night. ** RVR 1800 authorized with the use of FD or AP or HUD to DA.	MALSR 	MISSED APPROACH: Climb to 2500 direct ICINU and hold.

ATIS <b>120.2</b>	EVANSVILLE APP CON * <b>124.025 290.9</b>	EVANSVILLE TOWER * <b>118.7 (CTAF) 257.8</b>	GND CON <b>121.9</b>	CLNC DEL <b>126.6</b>	UNICOM <b>122.95</b>
----------------------	--	---	-------------------------	--------------------------	-------------------------



ELEV 422	<b>D</b> TDZE 422
----------	-------------------



CATEGORY	A	B	C	D
LPV DA		**622/24	200 (200-1/2)	
LNAV/VNAV DA		840/45	418 (500-3/8)	
LNAV MDA	860/24	438 (500-1/2)	860/40	438 (500-3/4)
<b>C</b> CIRCLING	920-1 498 (500-1)	1040-1 618 (700-1)	1040-1 3/4 618 (700-1 3/4)	1040-2 618 (700-2)

EC-2, 09 SEP 2021 to 07 OCT 2021

EC-2, 09 SEP 2021 to 07 OCT 2021