

WAAS CH 90124 W31A	APP CRS 308°	Rwy Idg TDZE Apt Elev	7000 590 597
--	------------------------	-----------------------------	---

RNAV (GPS) RWY 31

ABRAHAM LINCOLN CAPITAL (SPI)

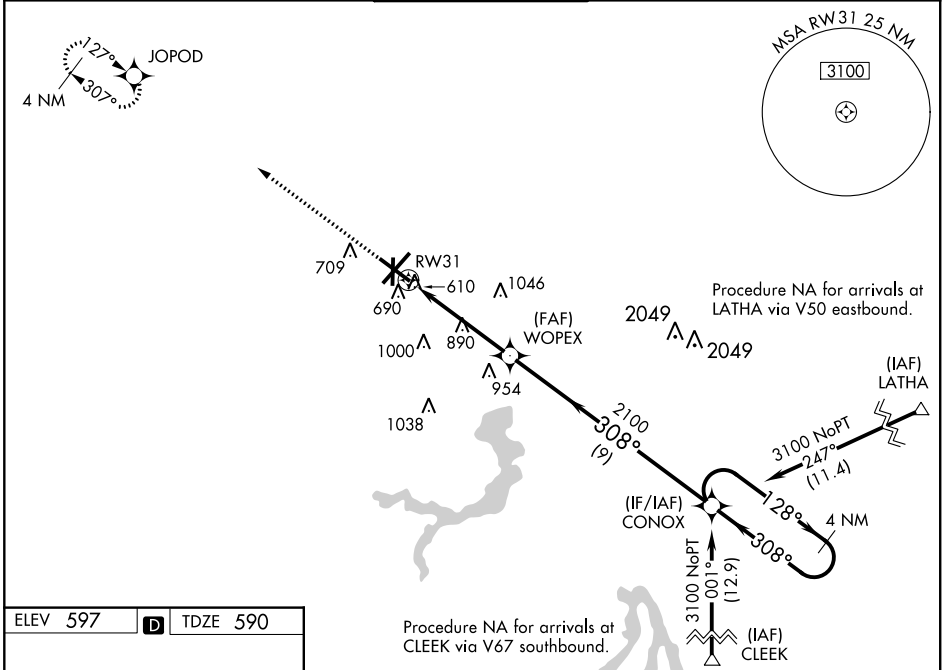
⚠ DME/DME RNP-0.3 NA. Baro-VNAV NA below -16°C (4°F). When local altimeter setting not received, use Lincoln altimeter setting: increase all DA 57 feet and MDA 60 feet, increase Circling Cat C and D visibility ¼ SM. VDP and ASR Baro-VNAV NA when using Logan County altimeter setting. For inoperative MALSR, increase LPV visibility to ¾ all Cats, increase LNAV/VNAV Cat D visibility to 1.

MALSR

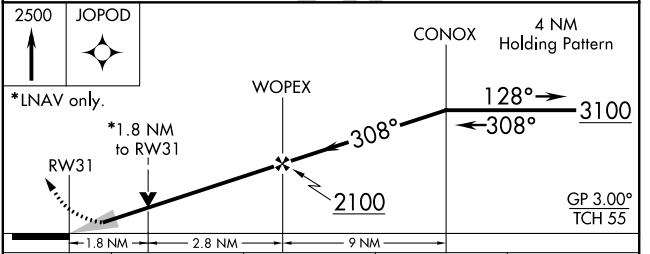
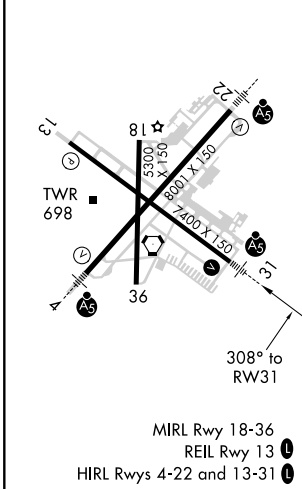


MISSED APPROACH:
Climb to 2500 direct JOPOD and hold.

ATIS 127.65 270.1	SPRINGFIELD APP CON * 126.15 323.0	SPRINGFIELD TOWER * 121.3 (CTAF) 257.8	GND CON 121.9 348.6	CLNC DEL 121.7	UNICOM 122.95
-----------------------------	--	--	-------------------------------	--------------------------	-------------------------



ELEV 597	D	TDZE 590
----------	----------	----------



CATEGORY	A	B	C	D
LPV DA	840-½ 250 (300-½)			
LNAV/VNAV DA	865-½ 275 (300-½)			865-¾ 275 (300-¾)
LNAV MDA	1200-½ 610 (700-½)	1200-¼ 610 (700-¼)		1200-½ 610 (700-½)
C CIRCLING	1200-1 603 (700-1)	1360-2¼ 762 (800-2¼)		1380-2½ 782 (800-2½)

EC-3, 09 SEP 2021 to 07 OCT 2021

EC-3, 09 SEP 2021 to 07 OCT 2021