

WAAS CH <b>66041</b> <b>W06A</b>	APP CRS <b>057°</b>	Rwy Idg <b>10000</b> TDZE <b>1103</b> Apt Elev <b>1159</b>
--	------------------------	--

# RNAV (GPS) Z RWY 6

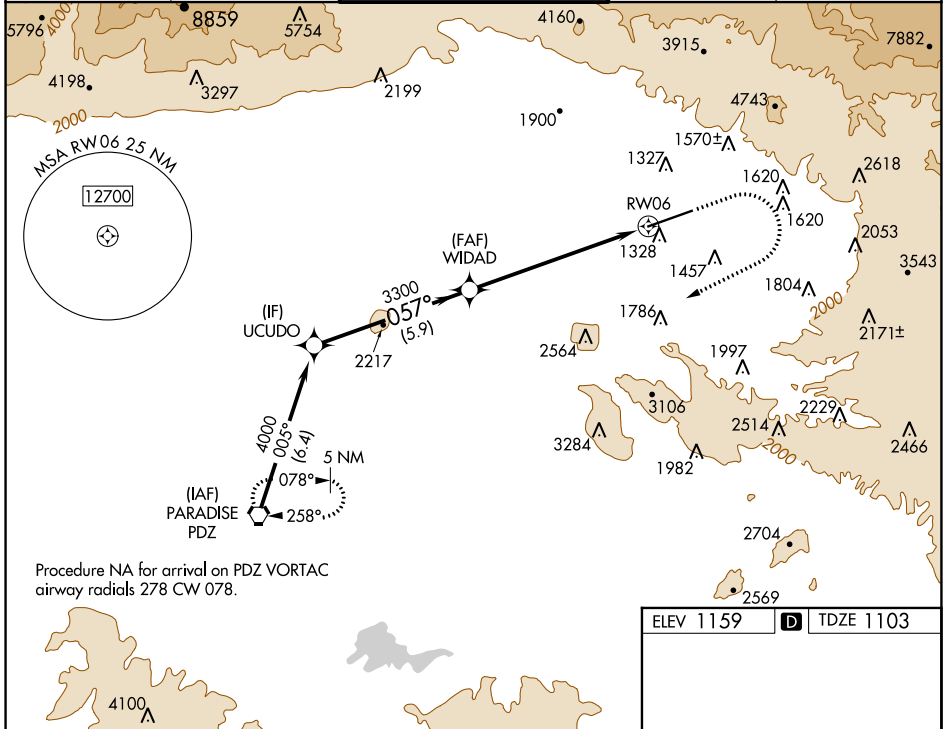
SAN BERNARDINO INTL (SBD)

RNP APCH

**▼** Circling NA northwest of Rwy 6-24. When local altimeter setting not received, use Ontario altimeter setting and increase DA to 1426 feet and all visibilities  $\frac{1}{4}$  SM; increase all MDA 80 feet and LNAV Cats C/D and Circling Cat C visibility  $\frac{1}{4}$  SM.

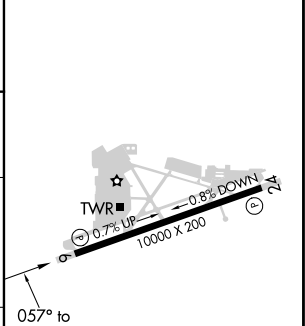
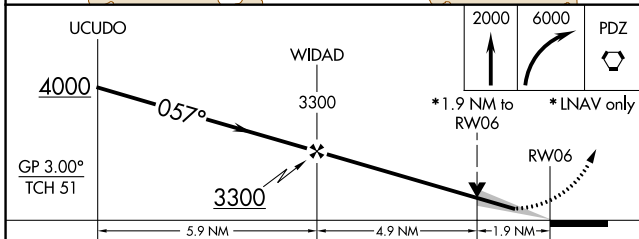
**MISSED APPROACH:** Climb to 2000 then climbing right turn to 6000 direct PDZ VORTAC and hold, continue climb-in-hold to 6000.  
# Missed approach requires minimum climb of 340 feet per NM to 4000; if unable to meet climb gradient, see RNAV (GPS) Y RWY 6.

ATIS <b>124.175</b>	SOCAL APP CON <b>127.0 318.2</b>	SAN BERNARDINO TOWER * <b>119.45 (CTAF) 0</b>	GND CON <b>121.8</b>	UNICOM <b>122.975</b>
------------------------	-------------------------------------	--	-------------------------	--------------------------



Procedure NA for arrival on PDZ VORTAC airway radials 278 CW 078.

ELEV 1159	<b>D</b> TDZE 1103
-----------	--------------------



CATEGORY	A	B	C	D
LPV DA#	1353- $\frac{3}{4}$		250 (200- $\frac{3}{4}$ )	
LNAV MDA #	1740-1	637 (600-1)	1740-1 $\frac{3}{4}$	637 (600-1 $\frac{3}{4}$ )
<b>C</b> CIRCLING	1740-1	581 (600-1)	1760-1 $\frac{3}{4}$ 601 (700-1 $\frac{3}{4}$ )	2640-3 1481 (1500-3)

HIRL Rwy 6-24 **0**  
REL Rwy 6 and 24 **0**

SW-3, 09 SEP 2021 to 07 OCT 2021

SW-3, 09 SEP 2021 to 07 OCT 2021