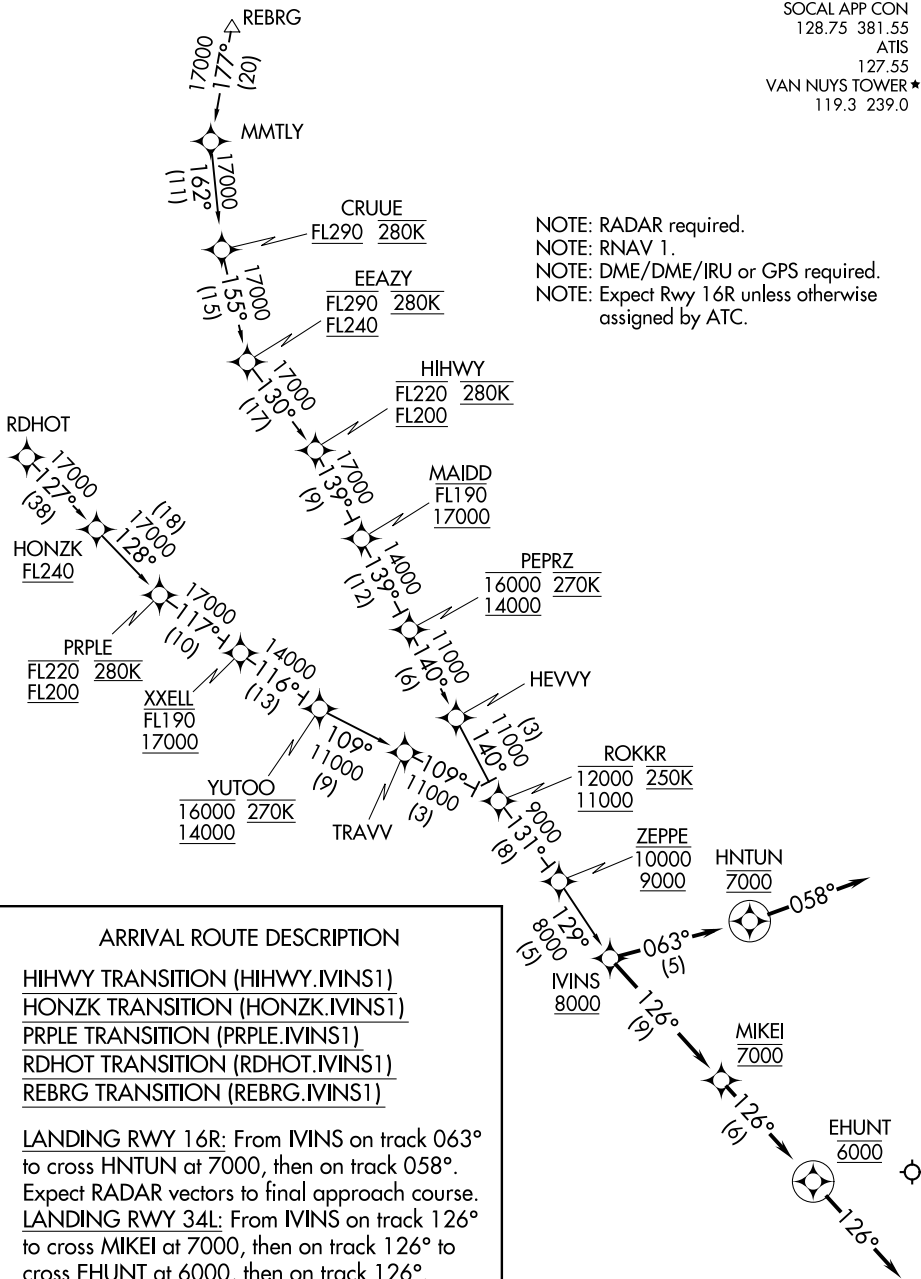


# IVINS ONE ARRIVAL (RNAV)

SOCAL APP CON  
128.75 381.55  
ATIS  
127.55  
VAN NUYS TOWER ★  
119.3 239.0

NOTE: RADAR required.  
NOTE: RNAV 1.  
NOTE: DME/DME/IRU or GPS required.  
NOTE: Expect Rwy 16R unless otherwise assigned by ATC.



### ARRIVAL ROUTE DESCRIPTION

- HIHWY TRANSITION (HIHWY.IVINS1)
- HONZK TRANSITION (HONZK.IVINS1)
- PRPLE TRANSITION (PRPLE.IVINS1)
- RDHOT TRANSITION (RDHOT.IVINS1)
- REBRG TRANSITION (REBRG.IVINS1)

**LANDING RWY 16R:** From IVINS on track 063° to cross HNTUN at 7000, then on track 058°. Expect RADAR vectors to final approach course.

**LANDING RWY 34L:** From IVINS on track 126° to cross MIKEL at 7000, then on track 126° to cross EHUNT at 6000, then on track 126°. Expect RADAR vectors to final approach course.

NOTE: Chart not to scale.

# IVINS ONE ARRIVAL (RNAV)

SW-3, 09 SEP 2021 to 07 OCT 2021

SW-3, 09 SEP 2021 to 07 OCT 2021