

LOC I-VNY 111.3	APP CRS 164°	Rwy Idg TDZE Apt Elev	6569 793 802
---------------------------	------------------------	-----------------------------	---

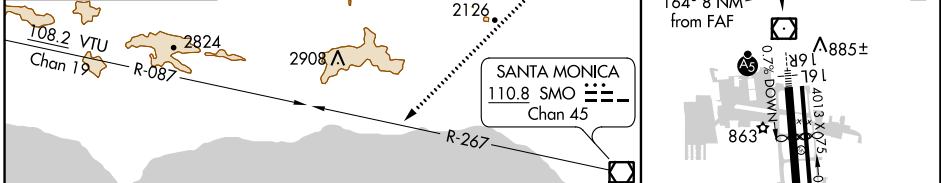
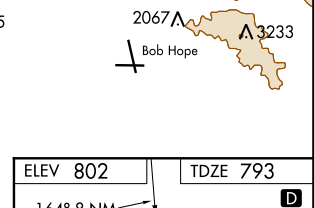
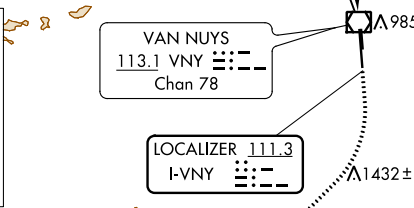
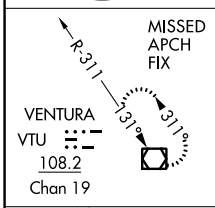
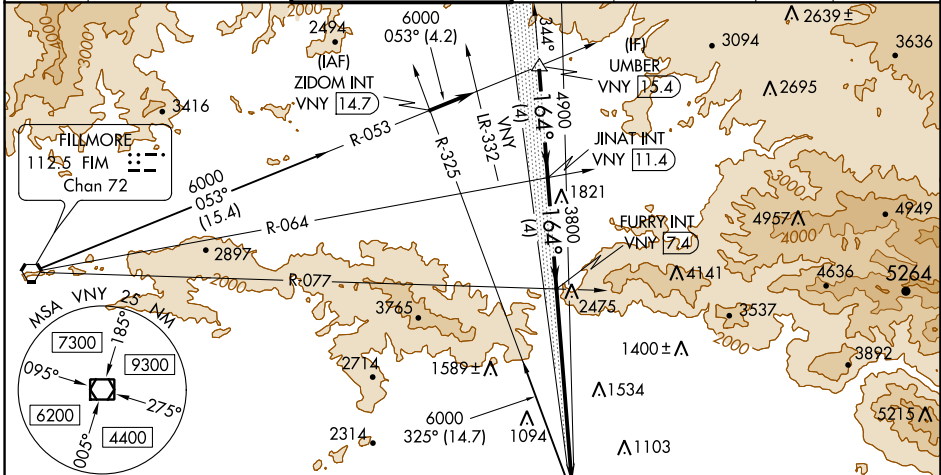
ILS Y RWY 16R

VAN NUYS (VNY)

▽ For inop MALSRL, increase S-ILS all Cats visibility to 2 SM. When **▲** local altimeter setting not received, use Burbank altimeter setting and increase DA to 1480 feet and all Cats visibility to 1½ SM.

MALSRL
MISSED APPROACH: Climb to 1700 then climbing right turn to 4600 on heading 210° and on SMO VOR/DME R-267 and on VTU VOR/DME R-087 to VTU VOR/DME and hold.

ATIS 127.55	SOCAL APP CON 120.4 360.6 (NORTH) 134.2 338.2 (WEST)	VAN NUYS TOWER * 119.3 (CTAF) 0 239.0	GND CON 121.7	CLNC DEL 126.6 239.0	CPDLC	UNICOM 122.95
-----------------------	--	---	-------------------------	--------------------------------	-------	-------------------------



UMBER VNY 15.4	JINAT INT VNY 11.4	FURRY INT VNY 7.4	1700	4600	SMO R-267	VTU R-087	VTU
6000 → 164°		4900		hdg 210°		TWR 868	
GS 3.50° TCH 49		3800		8001 X 1.50		34R	
CATEGORY	A	B	C	D			
S-ILS 16R	1461-1½		668 (700-1½)		HIRL Rwy 16R-34L MIRL Rwy 16L-34R		

SW-3, 09 SEP 2021 to 07 OCT 2021

SW-3, 09 SEP 2021 to 07 OCT 2021