

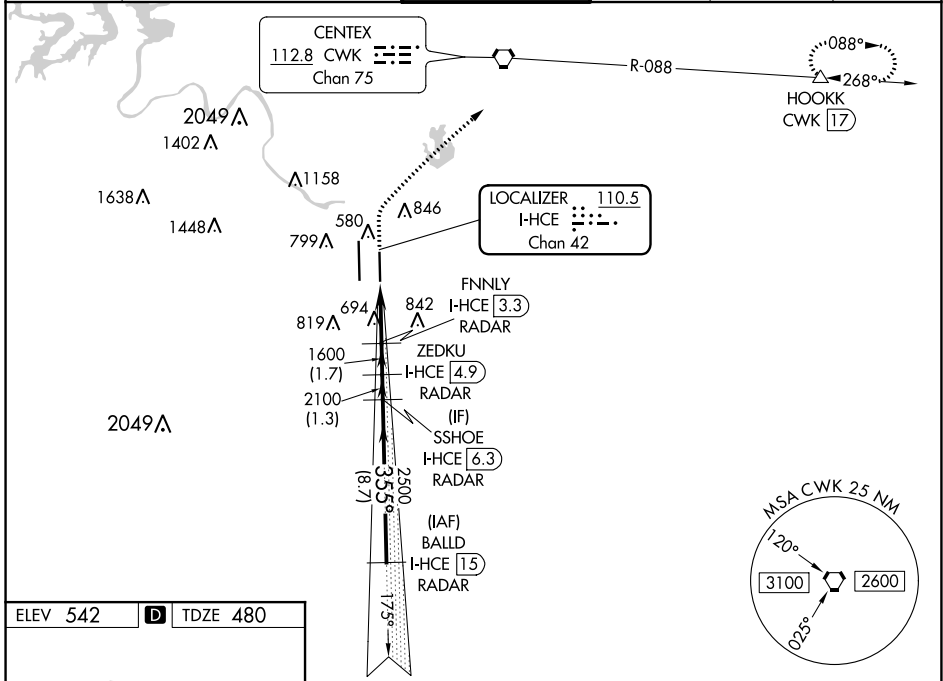
LOC/DME I-HCE <b>110.5</b> Chan <b>42</b>	APP CRS <b>355°</b>	Rwy Idg TDZE Apt Elev	<b>9000</b> <b>480</b> <b>542</b>
---	------------------------	-----------------------------	---

# ILS RWY 36R (SA CAT I & II)

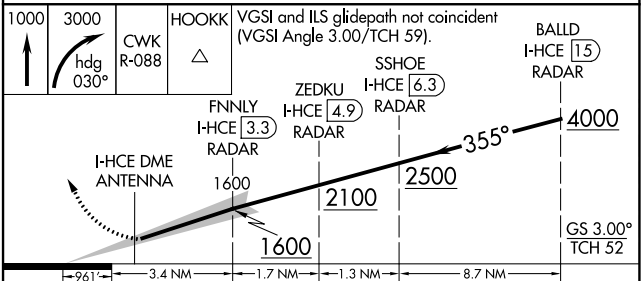
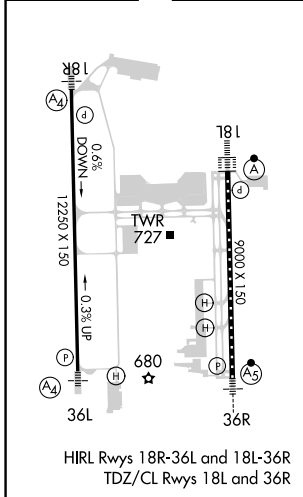
AUSTIN-BERGSTROM INTL (AUS)

DME required. RADAR required for procedure entry.		MALSR 	MISSED APPROACH: Climb to 1000 then climbing right turn to 3000 on heading 030° and CWK VORTAC R-088 to HOOKK/CWK 17 DME and hold.		
<p><b>▼</b> Simultaneous approach authorized.</p> <p><b>▲</b> SA CAT I: Requires specific OPSPEC, MSPEC or LOA approval. SA CAT II: Requires specific OPSPEC, MSPEC or LOA approval.</p>					

D-ATIS <b>124.4</b>	AUSTIN APP CON <b>127.225 317.65</b> (EAST) <b>120.875 270.25</b> (SOUTH) <b>119.0 370.85</b> (WEST)	AUSTIN TOWER <b>121.0 281.5</b>	GND CON <b>121.9 348.6</b>	CLNC DEL <b>125.5 263.0</b>	CPDLC
------------------------	---	------------------------------------	-------------------------------	--------------------------------	-------



ELEV 542	<b>D</b>	TDZE 480
----------	----------	----------



	9.61	3.4 NM	1.7 NM	1.3 NM	8.7 NM
CATEGORY	A	B	C	D	
S-ILS 36R	SA CAT I RA 185/14		150 DA 630		
S-ILS 36R	SA CAT II RA 110/12		100 DA 580		

## SA CATEGORY I & II ILS - SPECIAL AIRCREW & AIRCRAFT CERTIFICATION REQUIRED