

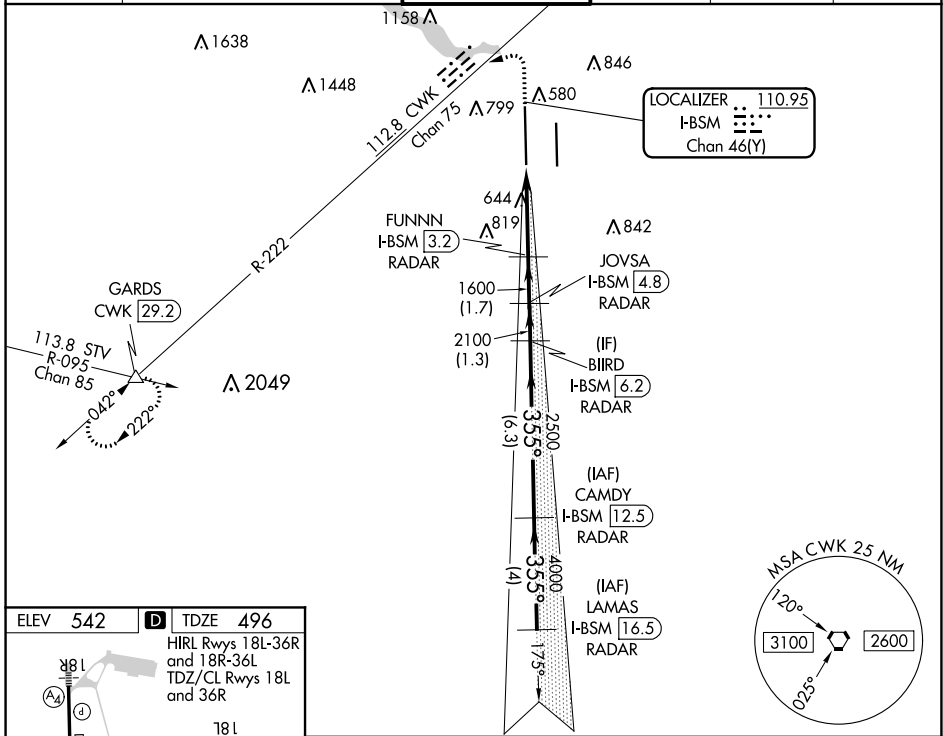
LOC/DME I-BSM 110.95 Chan 46(Y)	APP CRS 355°	Rwy Idg TDZE 496 Apt Elev 542	12250
---	------------------------	---	--------------

ILS or LOC RWY 36L

AUSTIN-BERGSTROM INTL (AUS)

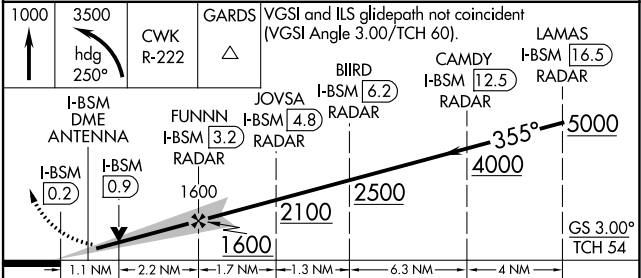
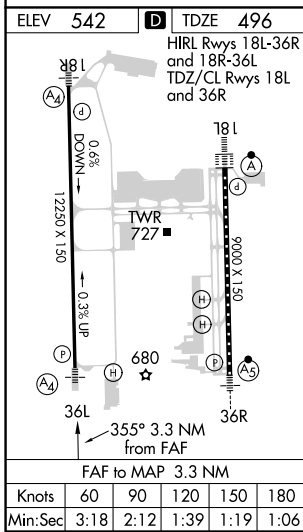
DME or RADAR required.	MALS ⏏ (A4)	MISSED APPROACH: Climb to 1000 then climbing left turn to 3500 on heading 250° and CWK VORTAC R-222 to GARDS INT/CWK 29.2 DME and hold.
<p>Simultaneous approach authorized. For inop ALS, increase S-LOC 36L Cats C/D/E visibility to RVR 6000. Inop table does not apply to S-ILS 36L all Cats.</p>		

D-ATIS 124.4	AUSTIN APP CON 127.225 317.65 120.875 270.25 (SOUTH) 119.0 370.85 (WEST)	AUSTIN TOWER 121.0 281.5	GND CON 121.9 348.6	CLNC DEL 125.5 263.0	CPDLC
------------------------	--	------------------------------------	-------------------------------	--------------------------------	-------



SC-3, 09 SEP 2021 to 07 OCT 2021

SC-3, 09 SEP 2021 to 07 OCT 2021



CATEGORY	A	B	C	D	E
S-ILS 36L	696/40 200 (200-¾)				
S-LOC 36L	900/40	404 (400-¾)	900/50 404 (400-1)		