

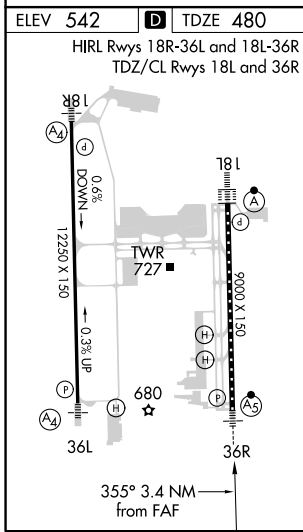
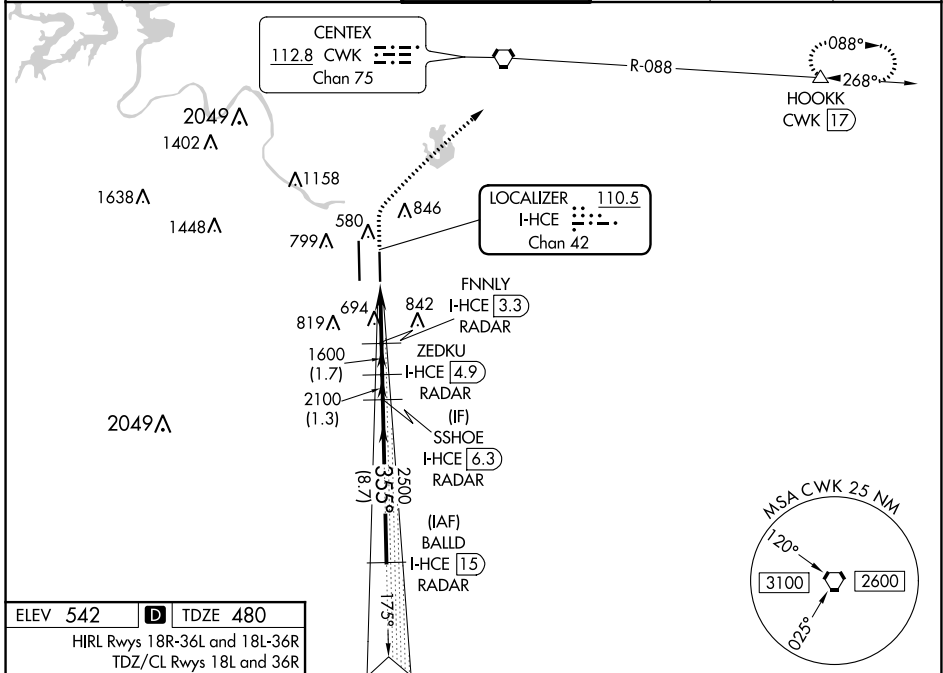
LOC/DME I-HCE 110.5 Chan 42	APP CRS 355°	Rwy Idg TDZE Apt Elev	9000 480 542
---	------------------------	-----------------------------	---

ILS or LOC RWY 36R

AUSTIN-BERGSTROM INTL (AUS)

DME required. RADAR required for procedure entry.		MALSR 	MISSED APPROACH: Climb to 1000 then climbing right turn to 3000 on heading 030° and CWK VORTAC R-088 to HOOKK/CWK 17 DME and hold.		
<p>∇ Simultaneous approach authorized.</p> <p>⚠ For inop ALS, increase S-ILS 36R Cat E visibility to RVR 4000, S-LOC 36R Cats C/D/E visibility to 1 3/8 SM.</p>					

D-ATIS 124.4	AUSTIN APP CON 127.225 317.65 (EAST) 120.875 270.25 (SOUTH) 119.0 370.85 (WEST)	AUSTIN TOWER 121.0 281.5	GND CON 121.9 348.6	CLNC DEL 125.5 263.0	CPDLC
------------------------	---	------------------------------------	-------------------------------	--------------------------------	-------



ELEV 542	D TDZE 480	HIRL Rwy 18R-36L and 18L-36R TDZ/CL Rwy 18L and 36R		VGSi and ILS glidepath not coincident (VGSi Angle 3.00/TCH 59).	
1000	3000	CWK R-088	HOOKK	BALLD I-HCE 15 RADAR	
*LOC only.		I-HCE DME ANTENNA	FNNLY I-HCE 3.3 RADAR	ZEDKU I-HCE 4.9 RADAR	SSHOE I-HCE 6.3 RADAR
I-HCE 0.1	*I-HCE 1.4	1600	2100	2500	4000
-1.5 NM		-1.9 NM	-1.7 NM	-1.3 NM	-8.7 NM
CATEGORY	A	B	C	D	E
S-ILS 36R	680/18 200 (200-1/2)				
S-LOC 36R	1000/24	520 (500-1/2)	1000/55 520 (500-1)		
C CIRCLING	1040-1 498 (500-1)	1100-1 558 (600-1)	1200-1 3/4 658 (700-1 1/4)	1200-2 658 (700-2)	1520-3 978 (1000-3)

SC-3, 09 SEP 2021 to 07 OCT 2021

SC-3, 09 SEP 2021 to 07 OCT 2021