

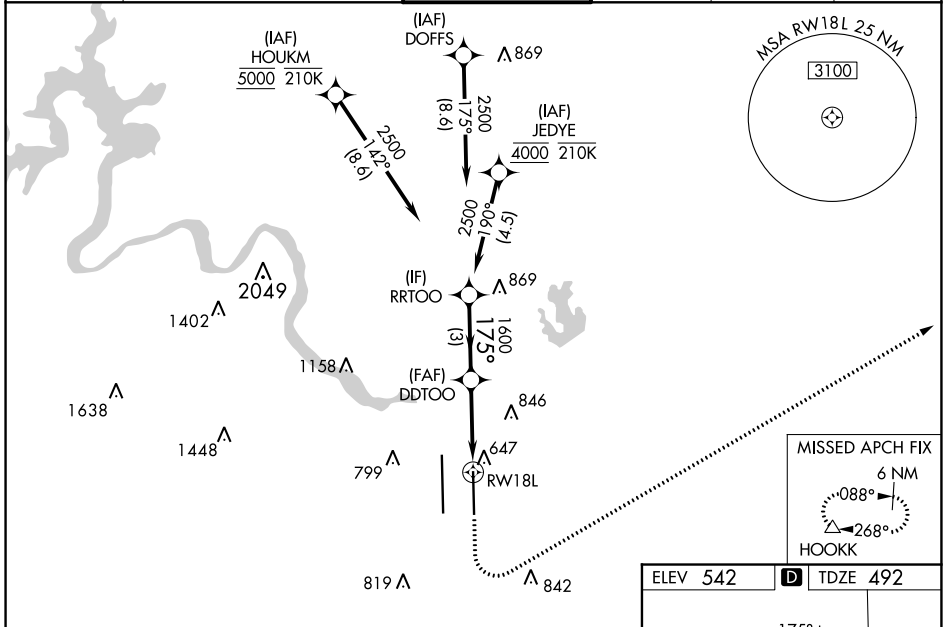
WAAS CH 62829 W18A	APP CRS 175°	Rwy Idg TDZE 492 Apt Elev 542	9000
--	------------------------	---	-------------

RNAV (GPS) Y RWY 18L

AUSTIN-BERGSTROM INTL (AUS)

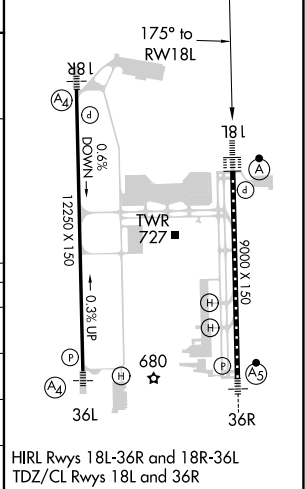
RNP APCH.	Simultaneous approach authorized. LNAV procedure NA during simultaneous operations. Use of FD or AP required during simultaneous operations. For uncompensated Baro-VNAV systems, LNAV/VNAV NA below -5°C or above 54°C. For inop ALS, increase LPV Cat E visibility to RVR 4000, LNAV/VNAV visibility all Cats to RVR 6000, and LNAV visibility Cats C, D, and E to RVR 6000.	ALSF-2 	MISSED APPROACH: Climb to 1000 then climbing left turn to 3000 direct HOOKK and hold.
⚠️			

D-ATIS 124.4	AUSTIN APP CON 127.225 317.65 (EAST) 120.875 270.25 (SOUTH) 119.0 370.85 (WEST)	AUSTIN TOWER 121.0 281.5	GND CON 121.9 348.6	CLNC DEL 125.5 263.0	CPDLC
------------------------	---	------------------------------------	-------------------------------	--------------------------------	-------



ELEV 542	D TDZE 492
----------	-------------------

RRTOO VGSI and RNAV glidepath not coincident (VGSI Angle 3.00/TCH 74). DDTOO 2500 175° 1600 1.1 NM to RW18L RW18L GP 3.00° TCH 61 3 NM 2.2 NM 1.1 NM	1000	3000	HOOKK		
	↑ ↻ △				
CATEGORY	A	B	C	D	E
LPV DA	692/18 200 (200-½)				
LNAV/VNAV DA	906/40 414 (400-¾)				
LNAV MDA	900/24	408 (400-½)	900/40		408 (400-¾)
ⓐ CIRCLING	1040-1 498 (500-1)	1100-1 558 (600-1)	1200-1¾ 658 (700-1¾)	1200-2 658 (700-2)	1520-3 978 (1000-3)



SC-3, 09 SEP 2021 to 07 OCT 2021

SC-3, 09 SEP 2021 to 07 OCT 2021