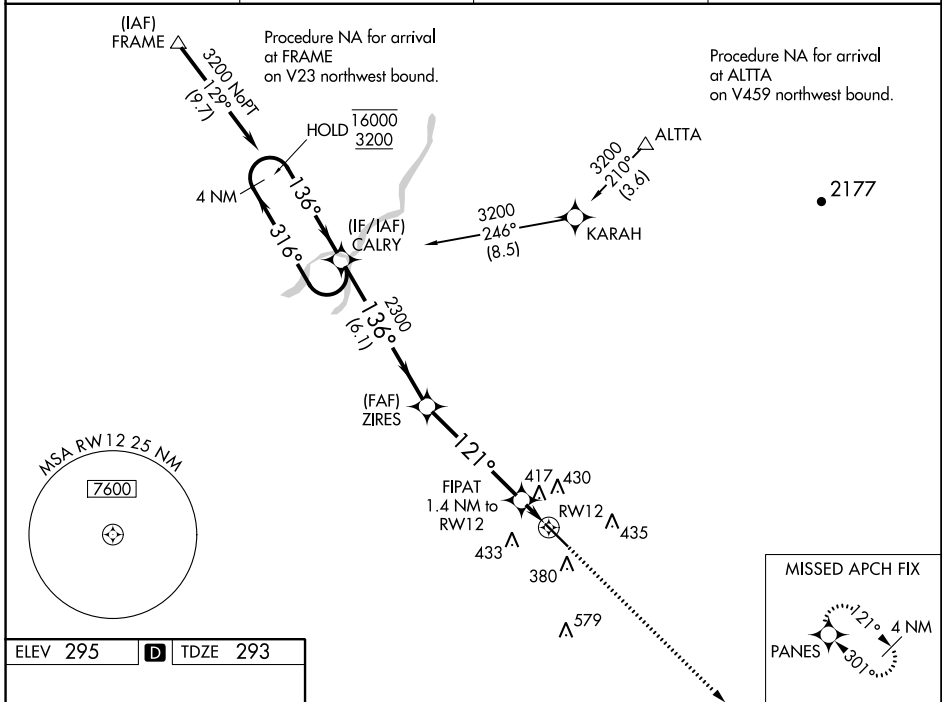


WAAS CH 82423 W12A	APP CRS 121°	Rwy Idg TDZE Apt Elev	5635 293 295
--	------------------------	-----------------------------	---

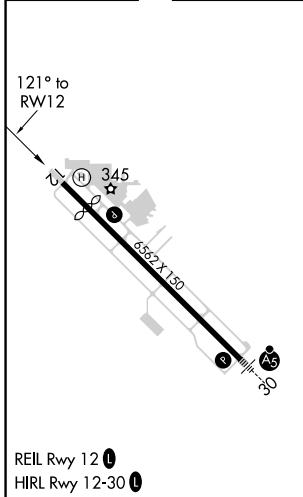
RNAV (GPS) RWY 12

VISALIA MUNI (VIS)

RNP APCH.		MISSED APPROACH: Climb to 2900 direct PANES and hold.	
<p>▼ For uncompensated Baro-VNAV systems, LNAV/VNAV NA below -15°C or above 54°C.</p> <p>▲</p>			
AWOS-3PT 119.925	FRESNO APP CON 118.5	CLNC DEL 118.5	UNICOM 123.05 (CTAF) 0



ELEV 295	D	TDZE 293
----------	----------	----------



4 NM Holding Pattern CALRY 16000 ← 316° 3200 → 136°				VGSI and RNAV glidepath not coincident (VGSI Angle 3.00/TCH 40).		2900	PANES	
GP 3.00° TCH 50		ZIRES 2300 1736°		FIPAT 1.4 NM to RW12 *LNAV only.		RW12 *780		
		6.1 NM		4.8 NM		1.4 NM		
CATEGORY	A	B	C	D				
LPV DA	543-3/4		250 (300-3/4)					
LNAV/VNAV DA	697-1/8		404 (500-1/8)					
LNAV MDA	680-1		387 (400-1)		680-1/8			387 (400-1/8)
C CIRCLING	720-1 425 (500-1)	760-1 465 (500-1)	760-1/2 465 (500-1/2)	940-2 645 (700-2)				

SW-2, 09 SEP 2021 to 07 OCT 2021

SW-2, 09 SEP 2021 to 07 OCT 2021