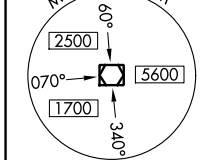
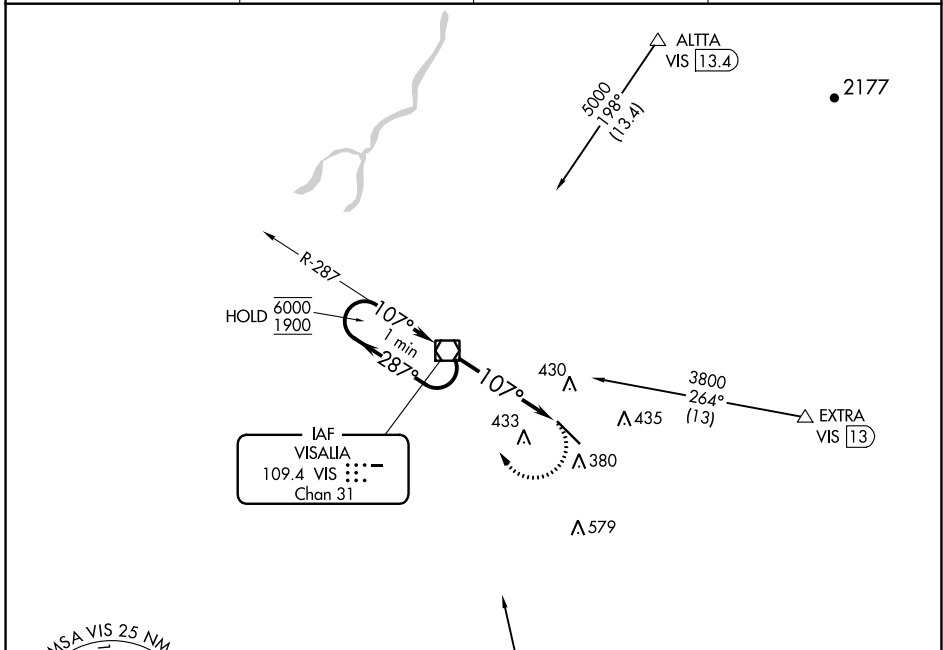


VOR/DME VIS	APP CRS	Rwy Idg	<b>5635</b>
<b>109.4</b>	<b>107°</b>	TDZE	<b>293</b>
Chan <b>31</b>		Apt Elev	<b>295</b>

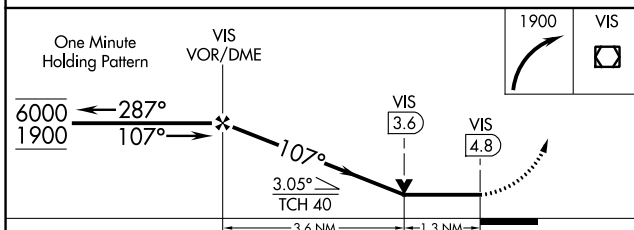
# VOR RWY 12

VISALIA MUNI (VIS)

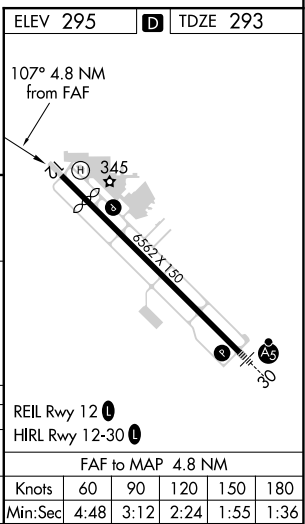
<p><b>▼</b> Rwy 12 helicopter visibility reduction below 3/4 SM NA.</p>		<p><b>▲</b> MISSED APPROACH: Climbing right turn to 1900 direct VIS VOR/DME and hold.</p>	
AWOS-3PT	FRESNO APP CON	CLNC DEL	UNICOM
<b>119.925</b>	<b>118.5</b>	<b>118.5</b>	<b>123.05 (CTAF) 0</b>



Procedure NA for arrivals at PIXKEY on V23 southeast bound.



CATEGORY	A	B	C	D
S-12	740-1	447 (500-1)	740-1 3/8	447 (500-1 3/8)
<b>C</b> CIRCLING	740-1 445 (500-1)	760-1 465 (500-1)	760-1 1/2 465 (500-1 1/2)	940-2 645 (700-2)



SW-2, 09 SEP 2021 to 07 OCT 2021

SW-2, 09 SEP 2021 to 07 OCT 2021