

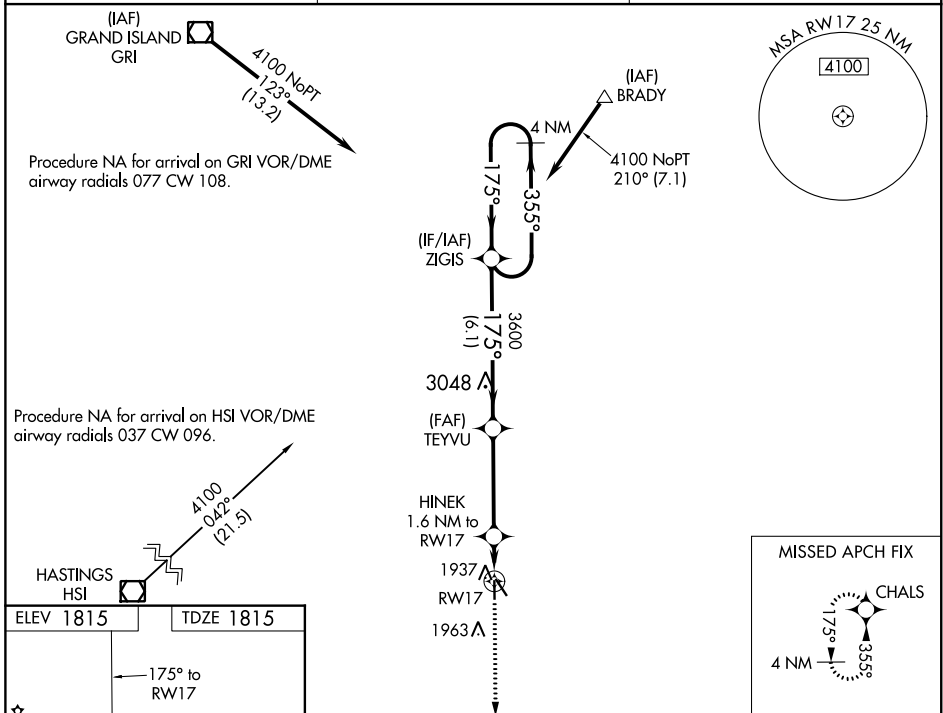
WAAS CH 99631 W17A	APP CRS 175°	Rwy Idg TDZE Apt Elev	3722 1815 1815
--	------------------------	-----------------------------	---

RNAV (GPS) RWY 17

HARVARD STATE (Ø8K)

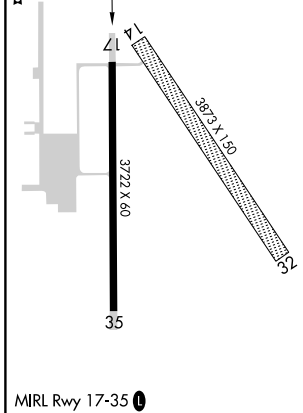
RNP APCH.	MISSED APPROACH: Climb to 4000 direct CHALS and hold.
<p>Baro-VNAV NA. Use Aurora Muni altimeter setting; when not received, use Central Nebraska Rgnl altimeter setting; increase LPV DA to 2120 feet, increase LNAV/VNAV DA to 2135 feet and visibility all Cats ½ SM, increase all MDAs 20 feet. Rwy 17 helicopter visibility reduction below ¾ SM NA.</p>	

AUH AWOS-3 121.225	MINNEAPOLIS CENTER 119.4 278.8	CTAF 122.90
------------------------------	--	-----------------------



NC-2, 09 SEP 2021 to 07 OCT 2021

NC-2, 09 SEP 2021 to 07 OCT 2021



4 NM Holding Pattern	ZIGIS	TEYVU	HINEK 1.6 NM to RW17	RW17
4100	355°	175°	3600	*2360
GP 3.00° TCH 40	6.1 NM	3.9 NM	1.6 NM	
CATEGORY	A	B	C	D
LPV DA	2102-1	287 (300-1)		NA
LNAV/VNAV DA	2117-1	302 (400-1)		NA
LNAV MDA	2280-1 465 (500-1)	2300-1 485 (500-1)		NA