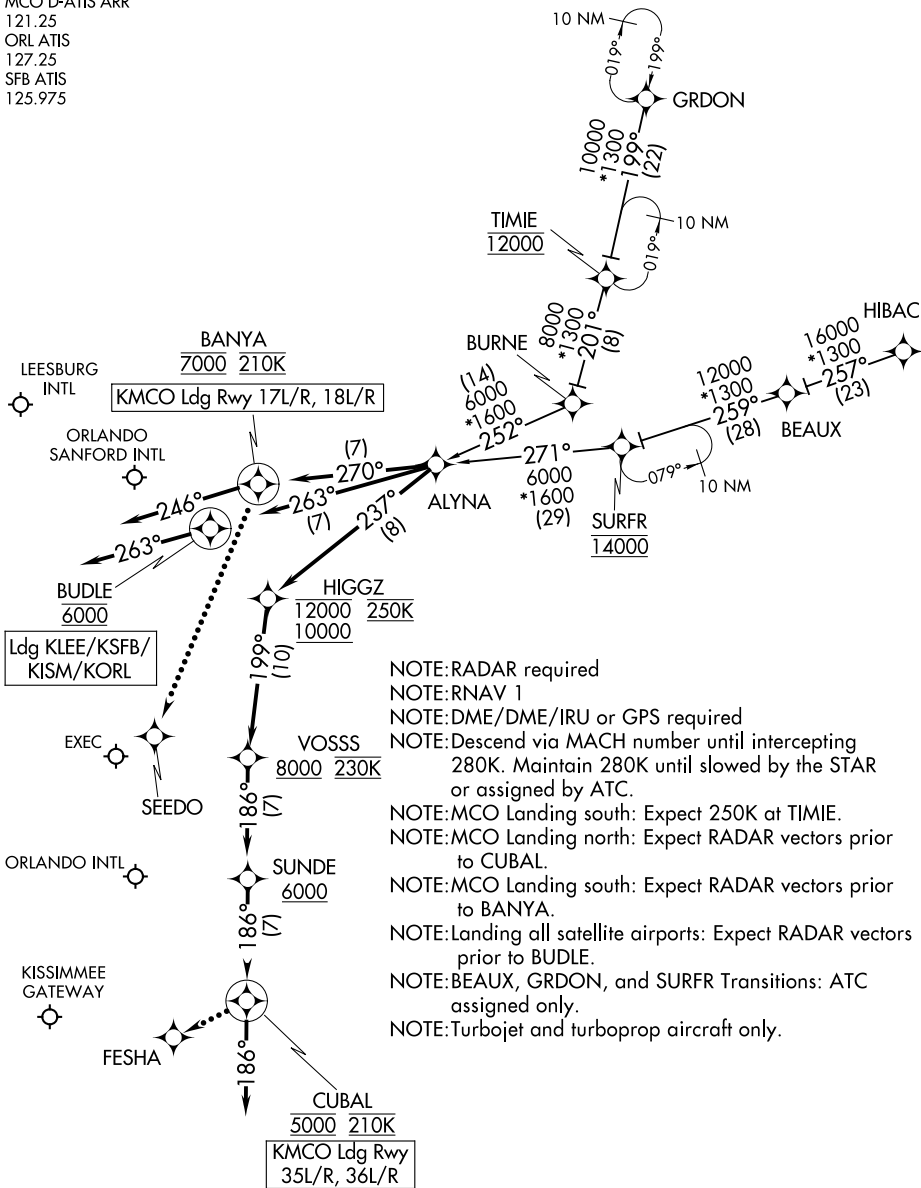


# ALYNA ONE ARRIVAL (RNAV)

ORLANDO, FLORIDA

ORLANDO APP CON  
 124.8 307.0  
 ISM ATIS  
 128.775  
 MCO D-ATIS ARR  
 121.25  
 ORL ATIS  
 127.25  
 SFB ATIS  
 125.975



NOTE:RADAR required  
 NOTE:RNAV 1  
 NOTE:DME/DME/IRU or GPS required  
 NOTE:Descend via MACH number until intercepting 280K. Maintain 280K until slowed by the STAR or assigned by ATC.  
 NOTE:MCO Landing south: Expect 250K at TIME.  
 NOTE:MCO Landing north: Expect RADAR vectors prior to CUBAL.  
 NOTE:MCO Landing south: Expect RADAR vectors prior to BANYA.  
 NOTE:Landing all satellite airports: Expect RADAR vectors prior to BUDLE.  
 NOTE:BEAUX, GRDON, and SURFR Transitions: ATC assigned only.  
 NOTE:Turbojet and turboprop aircraft only.

(NARRATIVE ON FOLLOWING PAGE)

NOTE: Chart not to scale.

# ALYNA ONE ARRIVAL (RNAV)

ORLANDO, FLORIDA

SE-3, 09 SEP 2021 to 07 OCT 2021

SE-3, 09 SEP 2021 to 07 OCT 2021