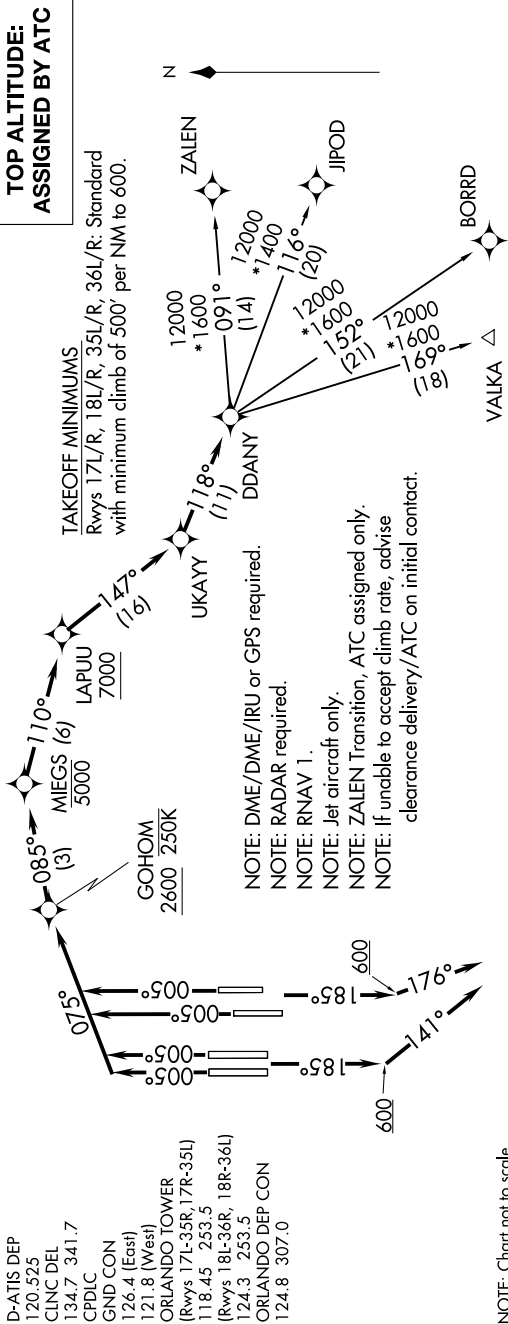


DDANY ONE DEPARTURE (RNAV)

SE-3, 09 SEP 2021 to 07 OCT 2021



D-ATIS DEP 120.525
 CLNC DEL 134.7 341.7
 CPDLC
 GND CON 126.4 (East)
 121.8 (West)
 ORLANDO TOWER (Rwys 17L-35R, 17R-35L)
 118.45 253.5
 (Rwys 18L-36R, 18R-36L)
 124.3 253.5
 ORLANDO DEP CON 124.8 307.0

NOTE: Chart not to scale.

DEPARTURE ROUTE DESCRIPTION SEE ADDITIONAL REQUIREMENTS ON AAPP

TAKEOFF RUNWAYS 17L/R: Climb on heading 185° to 600, then on heading 176° or as assigned by ATC, for vectors to UKAYY, thence

TAKEOFF RUNWAYS 18L/R: Climb on heading 185° to 600, then on heading 141° or as assigned by ATC, for vectors to UKAYY, thence

TAKEOFF RUNWAYS 35L/R, 36L/R: Climb on heading 005° to intercept course 075° to cross GOHOM at or above 2600 and at or below 250K, then on track 085° to cross MIEGS at or below 5000, then on track 110° to cross LAPUU at or above 7000, then on track 147° to UKAYY, thence

. on track 118° to DDANY. Maintain ATC assigned altitude. Expect filed altitude 10 minutes after departure.

JIPOD TRANSITION (DDANY1.JIPOD)
BORRD TRANSITION (DDANY1.BORRD)
VALKA TRANSITION (DDANY1.VALKA)
ZALEN TRANSITION (DDANY1.ZALEN)

SE-3, 09 SEP 2021 to 07 OCT 2021

DDANY ONE DEPARTURE (RNAV)

(DDANY1.DDANY) 22APR21