

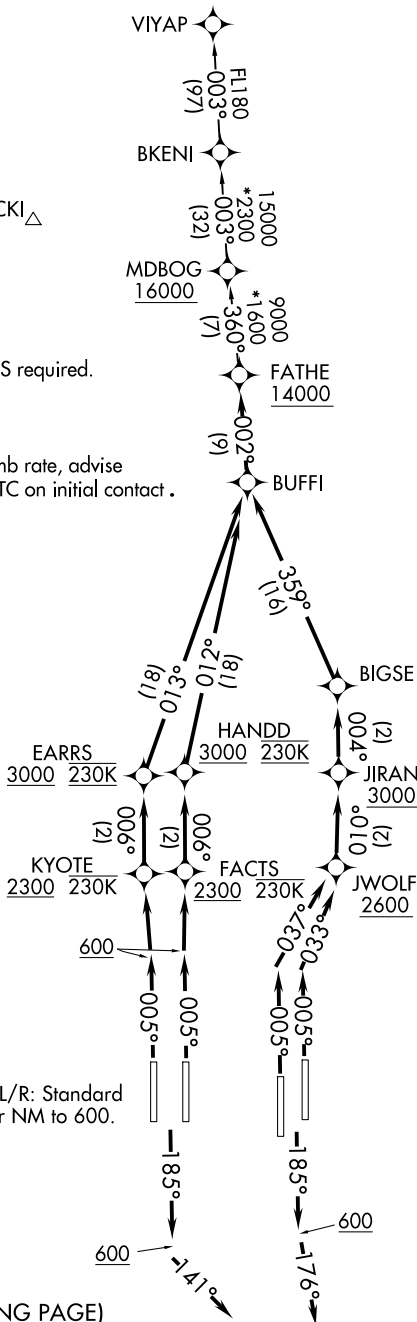
# FATHE ONE DEPARTURE (RNAV)

**TOP ALTITUDE:  
ASSIGNED BY ATC**

- D-ATIS DEP 120.525
- CLNIC DEL 134.7 341.7
- CPDLC
- GND CON 126.4 (East)
- 121.8 (West)
- ORLANDO TOWER 118.45 253.5
- (Rwys 17L-35R, 17R-35L) 124.3 253.5
- (Rwys 18L-36R, 18R-36L) 124.8 307.0
- ORLANDO DEP CON

MICKI  $\Delta$

- NOTE: DME/DME/IRU or GPS required.
- NOTE: RADAR required.
- NOTE: RNAV 1.
- NOTE: Jet aircraft only.
- NOTE: If unable to accept climb rate, advise clearance delivery/ATC on initial contact.



### TAKEOFF MINIMUMS

Rwys 17L/R, 18L/R, 35L/R, 36L/R: Standard with minimum climb of 500' per NM to 600.

(NARRATIVE ON FOLLOWING PAGE)

NOTE: Chart not to scale.

# FATHE ONE DEPARTURE (RNAV)

(FATHE1.FATHE) 22APR21