

LOC/DME I-ARK 110.95 Chan 46(Y)	APP CRS 185°	Rwy Idg 9000 TDZE 90 Apt Elev 96
--	------------------------	---

ILS RWY 17L (CAT II & III)

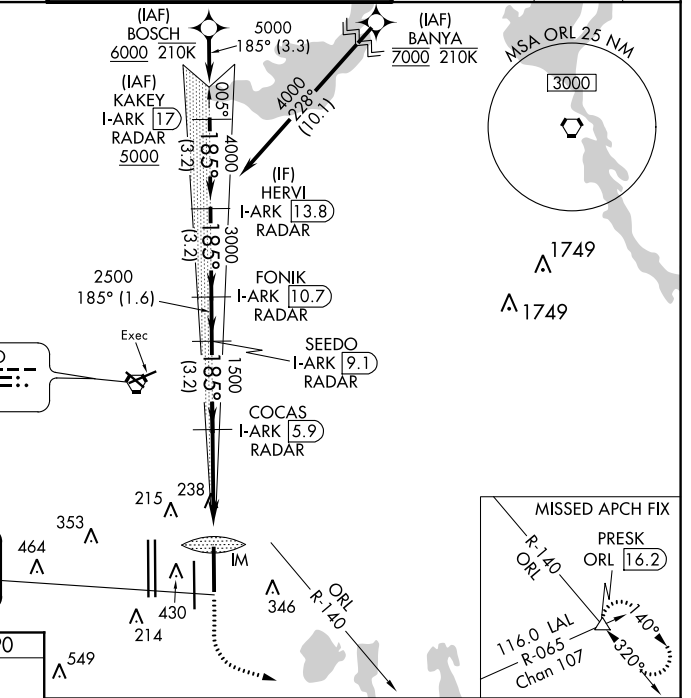
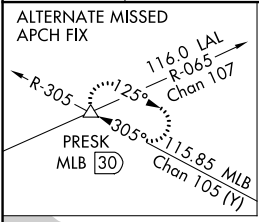
ORLANDO INTL (MCO)

RNAV 1-DME/DME/IRU or GPS or RADAR required for procedure entry. DME or RADAR required.

ALSF-2 MISSED APPROACH: Climb to 500 then climbing left turn to 3000 on heading 100° and ORL VORTAC R-140 to PRESK INT/ORL 1.6.2 DME and hold, continue climb-in-hold to 3000.

▼ Bright lights on highway midway between Rwy 17L and Rwy 17R may be mistaken for runway lights. Simultaneous approach authorized.

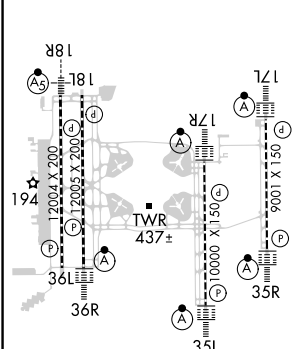
D-ATIS ARR 121.25 DEF 120.525	ORLANDO APP CON 124.8 307.0	ORLANDO TOWER 118.45 253.5 (Rwys 17L-35R, 17R-35L) 124.3 253.5 (Rwys 18L-36R, 18R-36L)	GND CON 126.4 (East) 121.8 (West)	CLNC DEL 134.7 341.7	CPDLC
---	---------------------------------------	--	---	--	-------



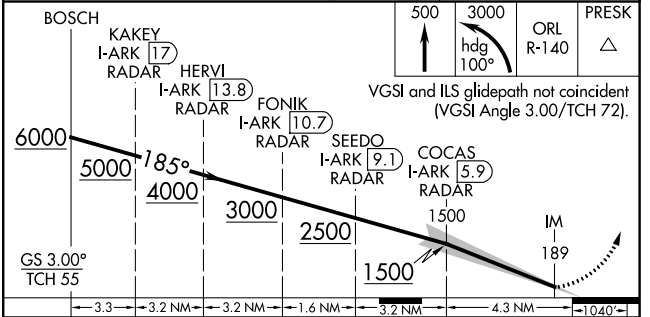
ORLANDO
112.2 ORL
Chan 59

LOCALIZER 110.95
I-ARK
Chan 46(Y)

ELEV 96	D	TDZE 90
---------	----------	---------



HIRL all Rwys
REIL Rwy 36L
TDZ/CL Rwys 17L/R, 18R, 35L/R and 36R



CATEGORY	A	B	C	D
S-ILS 17L	CAT II RA 101/12 100 DA 190			
S-ILS 17L	CAT III RVR 06			

CATEGORY II & III ILS - SPECIAL AIRCREW & AIRCRAFT CERTIFICATION REQUIRED

SE-3, 09 SEP 2021 to 07 OCT 2021

SE-3, 09 SEP 2021 to 07 OCT 2021