

|  |                        |                        |
|--|------------------------|------------------------|
| LOC/DME I-ARK<br><b>110.95</b><br>Chan 46(Y) | APP CRS<br><b>185°</b> | Rwy Idg<br><b>9000</b> |
|  |                        | TDZE<br><b>90</b>      |
|  |                        | Apt Elev<br><b>96</b>  |

# ILS RWY 17L (SA CAT I)

ORLANDO INTL (MCO)

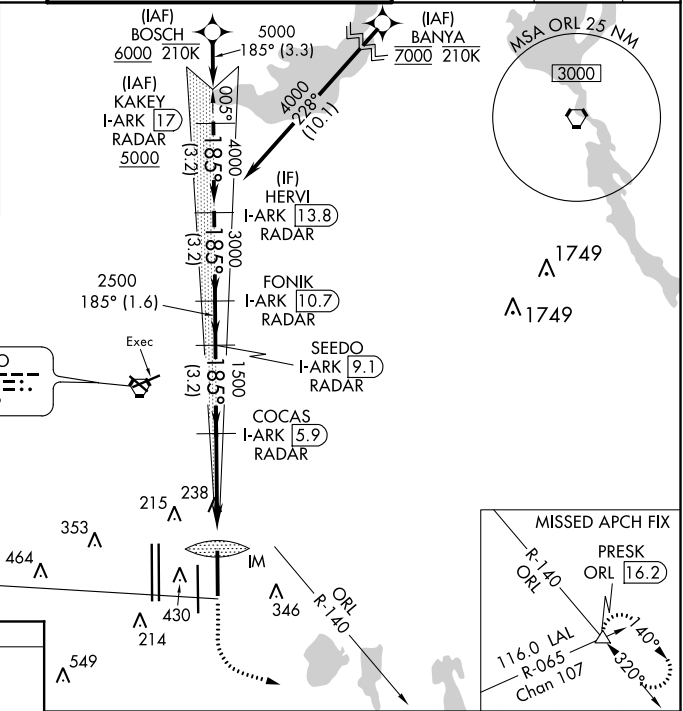
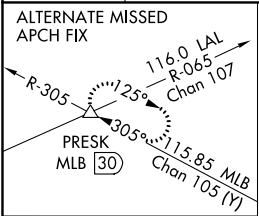
RNAV 1-DME/DME/IRU or GPS or RADAR required for procedure entry. DME or RADAR required.

▼ Bright lights on highway midway between Rwy 17L and Rwy 17R may be mistaken for runway lights. Simultaneous approach authorized. Requires specific OPSPEC, MSPEC, or LOA approval.

ALSF-2

MISSED APPROACH: Climb to 500 then climbing left turn to 3000 on heading 100° and ORL VORTAC R-140 to PRESK INT/ORL 16.2 DME and hold, continue climb-in-hold to 3000.

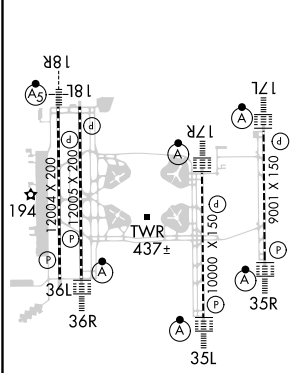
|   |                                       |  |   |  |       |
|---|---------------------------------------|--|---|--|-------|
| D-ATIS<br>ARR <b>121.25</b><br>DEP <b>120.525</b> | ORLANDO APP CON<br><b>124.8 307.0</b> | ORLANDO TOWER<br><b>118.45 253.5</b> (Rwys 17L-35R, 17R-35L)<br><b>124.3 253.5</b> (Rwys 18L-36R, 18R-36L) | GND CON<br><b>126.4</b> (East)<br><b>121.8</b> (West) | CLNC DEL<br><b>134.7</b><br><b>341.7</b> | CPDLC |
|---|---------------------------------------|--|---|--|-------|



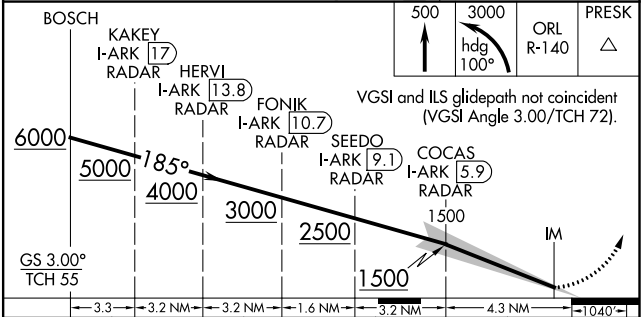
SE-3, 09 SEP 2021 to 07 OCT 2021

SE-3, 09 SEP 2021 to 07 OCT 2021

|         |   |         |
|---------|---|---------|
| ELEV 96 | D | TDZE 90 |
|---------|---|---------|



HIRL all Rwys  
REIL Rwy 36L  
TDZ/CL Rwys 17L/R, 18R, 35L/R and 36R



|  |                      |   |   |   |
|--|----------------------|---|---|---|
| CATEGORY   | A                    | B | C | D |
| S-ILS 17L  | RA 145/14 150 DA 240 |   |   |   |
| <b>SA CATEGORY I ILS - SPECIAL AIRCREW &amp; AIRCRAFT CERTIFICATION REQUIRED</b> |                      |   |   |   |