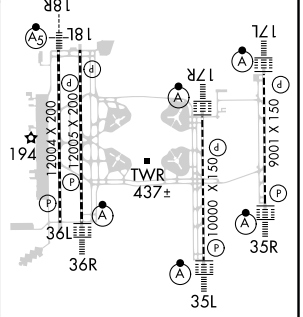
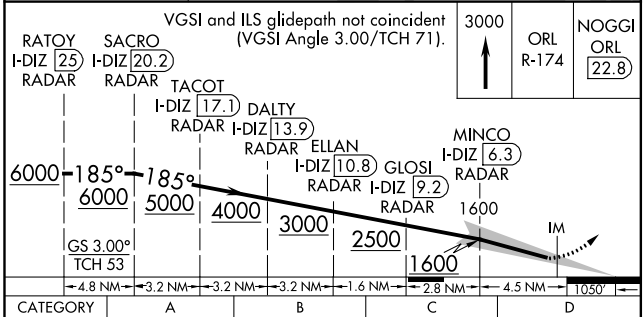
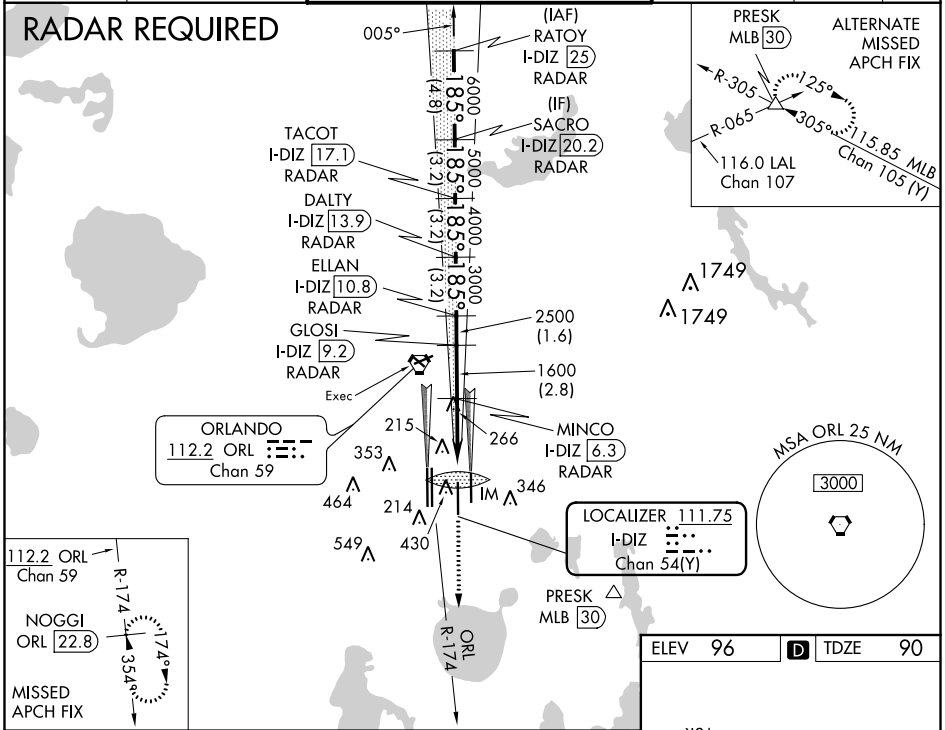


LOC/DME I-DIZ 111.75 Chan 54(Y)	APP CRS 185°	Rwy Idg 10000 TDZE 90 Apt Elev 96
---	------------------------	--

ILS RWY 17R (CAT II)

ORLANDO INTL (MCO)

<p>⚠ Simultaneous approach authorized. DME or RADAR required. ⚠ Bright lights on highway midway between Rwy 17L and Rwy 17R may be mistaken for runway lights.</p>		<p>ALSF-2 </p>	<p>MISSED APPROACH: Climb to 3000 via ORL VORTAC R-174 to NOGGI/ ORL 22.8 DME and hold.</p>		
D-ATIS ARR 121.25 DEP 120.525	ORLANDO APP CON 124.8 307.0	ORLANDO TOWER 118.45 253.5 (Rwys 17L-35R, 17R-35L) 124.3 253.5 (Rwys 18L-36R, 18R-36L)	GND CON 126.4 (East) 121.8 (West)	CLNC DEL 134.7 341.7	CPDLC



CATEGORY	A	B	C	D
S-ILS 17R	RA 104/12 100 DA 190			

CATEGORY II ILS - SPECIAL AIRCREW & AIRCRAFT CERTIFICATION REQUIRED

HIRL all Rwys
REIL Rwy 36L
TDZ/CL Rwys 17L/R, 18R, 35L/R and 36R

SE-3, 09 SEP 2021 to 07 OCT 2021

SE-3, 09 SEP 2021 to 07 OCT 2021