

LOC/DME I- DDO 110.5 Chan 42	APP CRS 005°	Rwy Idg 10000 TDZE 88 Apt Elev 96
---	------------------------	--

ILS RWY 35L (CAT II & III)

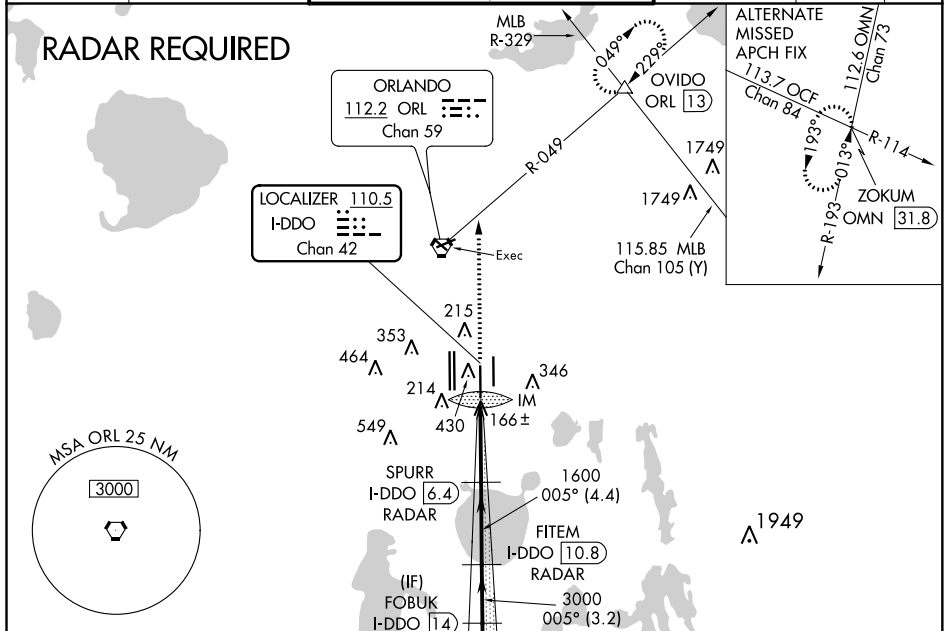
ORLANDO INTL (MCO)

⚠ DME or RADAR required. Bright lights on highway midway between Rwy 35L and Rwy 35R may be mistaken for runway lights. Simultaneous approach authorized. When using alternate missed approach, simultaneous approach NA.

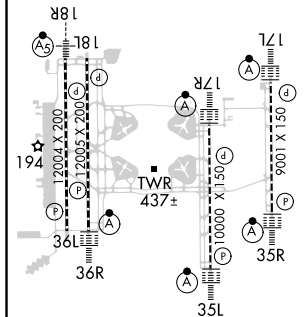
ALSF-2

MISSED APPROACH: Climb to 3000 on heading 005° and ORL VORTAC R-049 to OVIDO INT/ORL 13 DME and hold.

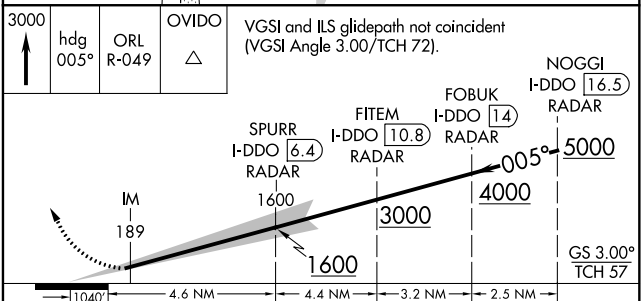
D-ATIS ARR 121.25 DEF 120.525	ORLANDO APP CON 124.8 307.0	ORLANDO TOWER 118.45 253.5 (Rwys 17L-35R, 17R-35L) 124.3 253.5 (Rwys 18L-36R, 18R-36L)	GND CON (East) 126.4 (West) 121.8	CLNC DEL 134.7 341.7	CPDLC
---	---------------------------------------	--	--	--	-------



ELEV 96	D	TDZE 88
---------	----------	---------



HIRL all Rwys
REIL Rwy 36L
TDZ/CL Rwys 17L/R, 18R,
35L/R and 36R



CATEGORY	A	B	C	D
S-ILS 35L	CAT II RA 106/12 100 DA 188			
S-ILS 35L	CAT III RVR 06			

CATEGORY II & III ILS - SPECIAL AIRCREW & AIRCRAFT CERTIFICATION REQUIRED

SE-3, 09 SEP 2021 to 07 OCT 2021

SE-3, 09 SEP 2021 to 07 OCT 2021