


LOC/DME I-DDO 110.5 Chan 42	APP CRS 005°	Rwy Idg TDZE 88 Apt Elev 96	10000
--	------------------------	---	--------------

ILS RWY 35L (SA CAT I)

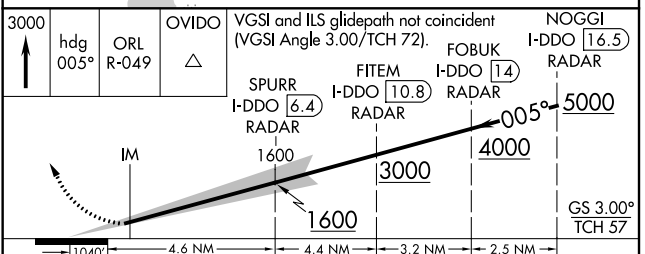
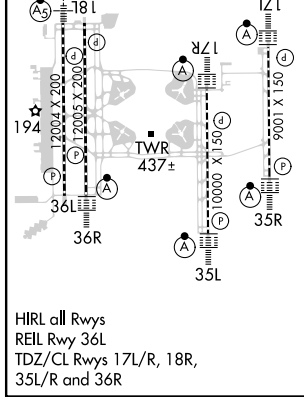
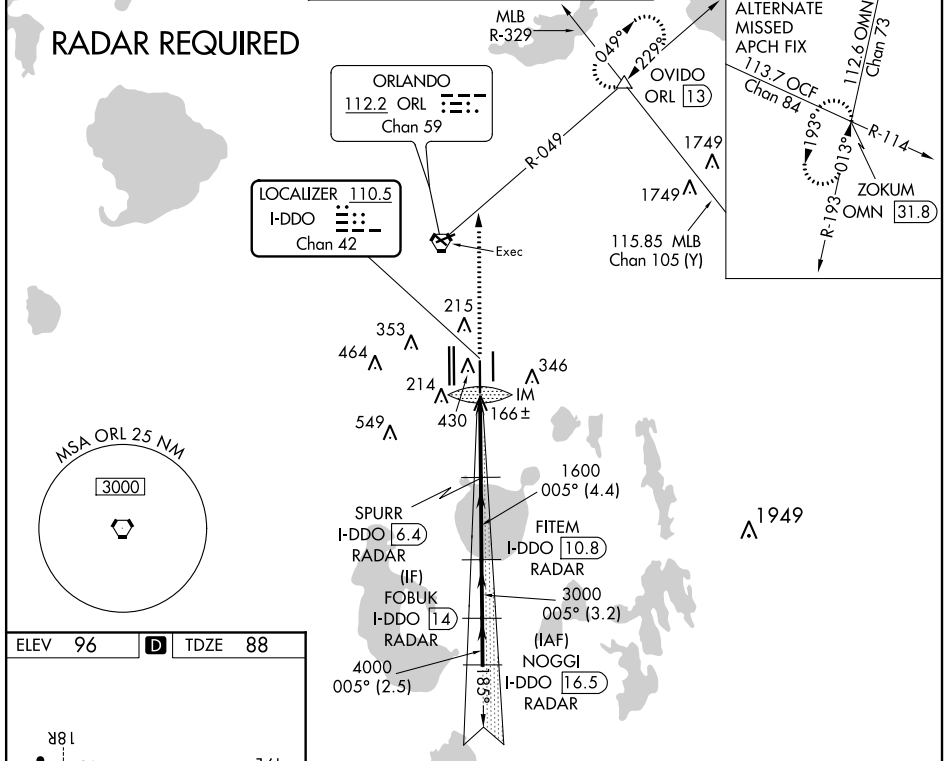
ORLANDO INTL (MCO)

⚠ DME or RADAR required. Bright lights on highway midway between Rwy 35L and Rwy 35R may be mistaken for runway lights. Simultaneous approach authorized. When using alternate missed approach, simultaneous approach NA. Requires specific OPSPEC, MSPEC or LOA approval and use of HUD to DH.

ALSF-2 

MISSED APPROACH: Climb to 3000 on heading 005° and ORL VORTAC R-049 to OVIDO INT/ORL 13 DME and hold.

D-ATIS ARR 121.25 DEP 120.525	ORLANDO APP CON 124.8 307.0	ORLANDO TOWER 118.45 253.5 (Rwys 17L-35R, 17R-35L) 124.3 253.5 (Rwys 18L-36R, 18R-36L)	GND CON (East) 126.4 (West) 121.8	CLNC DEL 134.7 341.7	CPDLC
---	---------------------------------------	--	--	--	-------



CATEGORY	A	B	C	D
S-ILS 35R	RA 164/14 150 DA 238			
SA CATEGORY I ILS - SPECIAL AIRCREW & AIRCRAFT CERTIFICATION REQUIRED				

SE-3, 09 SEP 2021 to 07 OCT 2021

SE-3, 09 SEP 2021 to 07 OCT 2021