

LOC/DME I-CER 111.15	APP CRS 005°	Rwy Idg 9000 TDZE 90 Apt Elev 96
Chan 48 (Y)		

ILS RWY 35R (CAT II & III)
ORLANDO INTL (MCO)

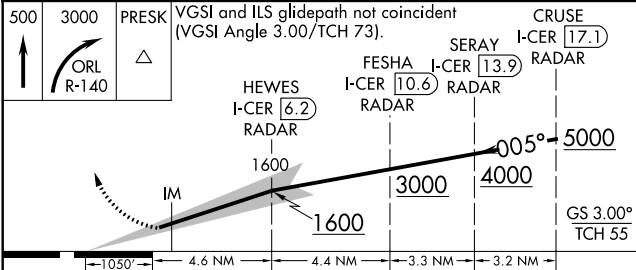
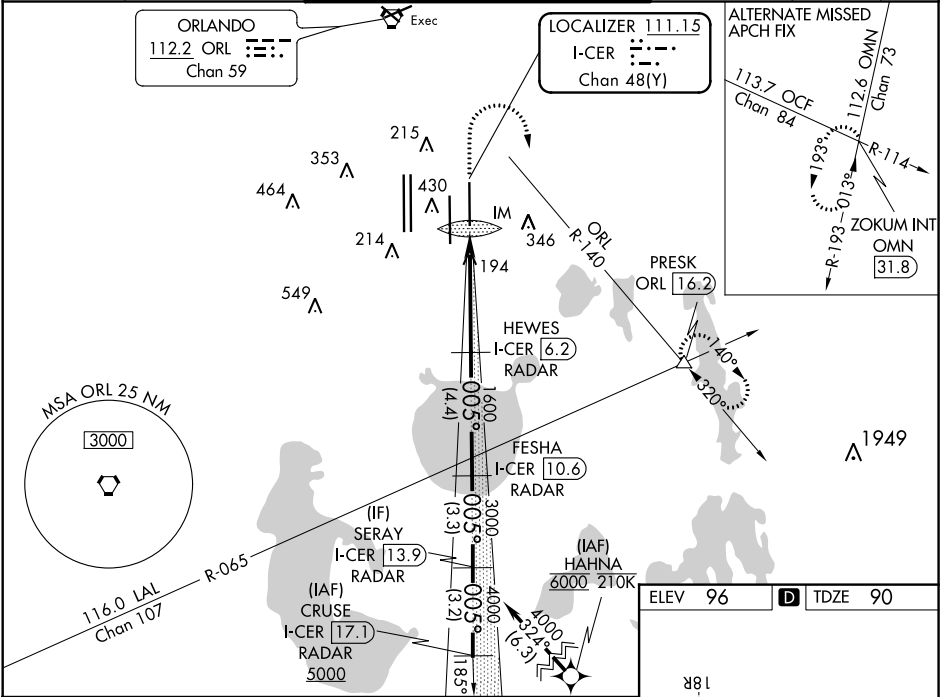
From HAHNA: RNAV 1-DME/DME/IRU or GPS required. Aircraft not DME/DME/IRU or GPS equipped-RADAR required for procedure entry.



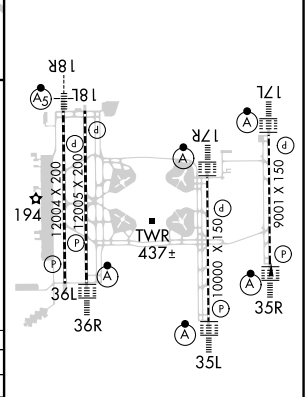
MISSED APPROACH: Climb to 500 then climbing right turn to 3000 on ORL VORTAC R-140 to PRESK INT/ ORL 16.2 DME and hold, continue climb-in-hold to 3000.

Simultaneous approach authorized. Bright lights on highway midway between Rwy 35L and Rwy 35R may be mistaken for runway lights. When using alternate missed approach, simultaneous approach NA.

D-ATIS ARR 121.25 DEP 120.525	ORLANDO APP CON 124.8 307.0	ORLANDO TOWER 118.45 253.5 (Rwys 17L-35R, 17R-35L) 124.3 253.5 (Rwys 18L-36R, 18R-36L)	GND CON 126.4 (East) 121.8 (West)	CLNC DEL 134.7 341.7	CPDLC
---	---------------------------------------	--	---	--	-------



ELEV 96	TDZE 90
---------	---------



CATEGORY	A	B	C	D
S-ILS 35R	CAT II RA 101/12 100 DA 190			
S-ILS 35R	CAT III RVR 06			

CATEGORY II & III ILS - SPECIAL AIRCREW & AIRCRAFT CERTIFICATION REQUIRED

HIRL all Rwys
REIL Rwy 36L
TDZ/CL Rwys 17L/R, 18R,
35L/R and 36R

SE-3. 09 SEP 2021 to 07 OCT 2021

SE-3. 09 SEP 2021 to 07 OCT 2021