

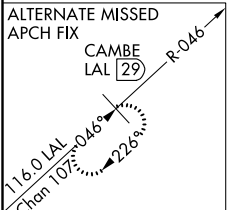
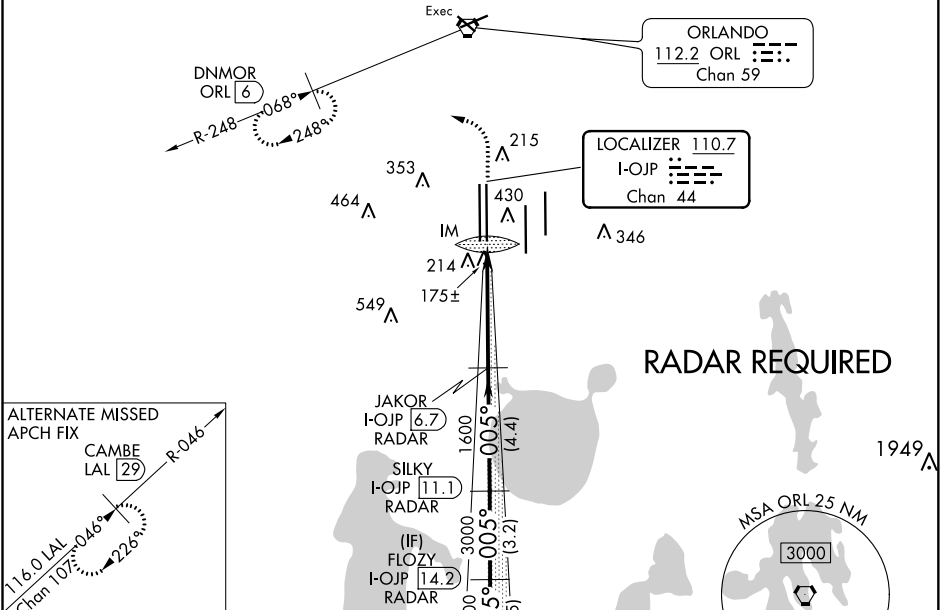
LOC/DME I-OJP 110.7 Chan 44	APP CRS 005°	Rwy ldg 11601 TDZE 92 Apt Elev 96
---	------------------------	--

ILS RWY 36R (CAT II & III)

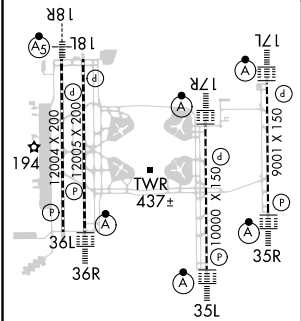
ORLANDO INTL (MCO)

▲ DME or RADAR required. ▲ Simultaneous approach authorized.	ALSF-2 	MISSED APPROACH: Climb to 500 then climbing left turn to 3000 on heading 309° and ORL R-248 to DNMR/ORL 6 DME and hold, continue climb-in-hold to 3000.		

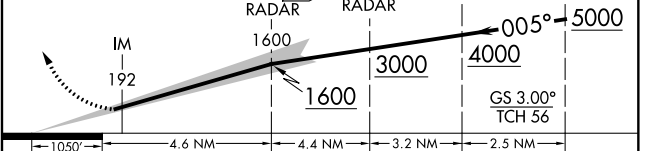
D-ATIS ARR 121.25 DEP 120.525	ORLANDO APP CON 124.8 307.0	ORLANDO TOWER 118.45 253.5 (Rwys 17L-35R,17R-35L) 124.3 253.5 (Rwys 18L-36R,18R-36L)	GND CON 126.4 (East) 121.8 (West)	CLNC DEL 134.7 134.7	CPDLC
---	---------------------------------------	--	---	--	-------



ELEV 96	D	TDZE 92
---------	----------	---------



500	3000	hdg 309° ORL R-248	DNMR ORL 6	VGSI and ILS glidepath not coincident (VGSI Angle 3.00/TCH 70)	JAKOR I-OJP 6.7 RADAR	SILKY I-OJP 11.1 RADAR	FLOZY I-OJP 14.2 RADAR	TRAMP I-OJP 16.8 RADAR
-----	------	--------------------	------------	--	-----------------------	------------------------	------------------------	------------------------



CATEGORY	A	B	C	D
----------	---	---	---	---

S-ILS 36R	CAT II RA 106/12 100 DA 192			
-----------	-----------------------------	--	--	--

S-ILS 36R	CAT III RVR 06			
-----------	----------------	--	--	--

CATEGORY II & III ILS - SPECIAL AIRCREW & AIRCRAFT CERTIFICATION REQUIRED

SE-3, 09 SEP 2021 to 07 OCT 2021

SE-3, 09 SEP 2021 to 07 OCT 2021