

LOC/DME I-ARK 110.95 Chan 46(Y)	APP CRS 185°	Rwy Idg 9000 TDZE 90 Apt Elev 96
---	------------------------	---

ILS or LOC RWY 17L

ORLANDO INTL (MCO)

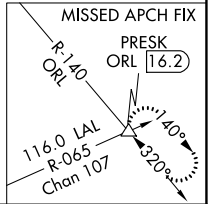
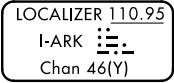
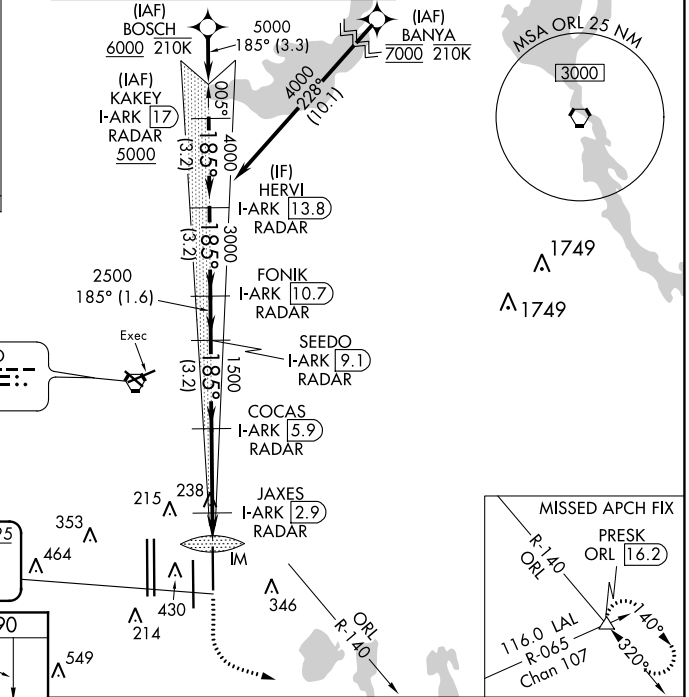
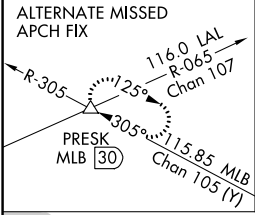
RNAV 1-DME/DME/IRU or GPS or RADAR required for procedure entry. DME or RADAR required.



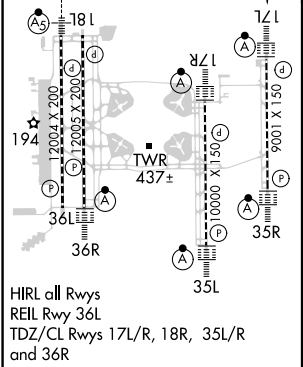
MISSED APPROACH: Climb to 500 then climbing left turn to 3000 on heading 100° and ORL VORTAC R-140 to PRESK INT/ORL 16.2 DME and hold, continue climb-in-hold to 3000.

▼ Bright lights on highway midway between Rwy 17L and Rwy 17R may be mistaken for runway lights. Simultaneous approach authorized. For inop ALS, increase S-LOC 17L Cats C/D visibility to RVR 6000.

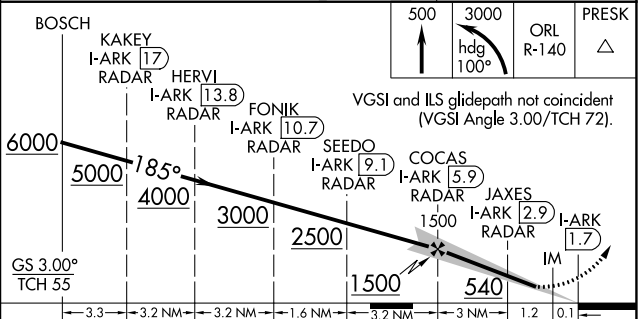
D-ATIS ARR 121.25 DEP 120.525	ORLANDO APP CON 124.8 307.0	ORLANDO TOWER 118.45 253.5 (Rwys 17L-35R, 17R-35L) 124.3 253.5 (Rwys 18L-36R, 18R-36L)	GND CON 126.4 (East) 121.8 (West)	CLNC DEL 134.7 341.7	CPDLC
---	---------------------------------------	--	---	--	-------



ELEV 96	D TDZE 90
185° 4.3 NM from FAF	



FAF to MAP 4.3 NM					
Knots	60	90	120	150	180
Min:Sec	4:18	2:52	2:09	1:43	1:26



CATEGORY	A	B	C	D
S-ILS 17L	290/18 200 (200-1/2)			
S-LOC 17L	500/24	410 (500-1/2)	500/40	410 (500-3/4)
CIRCLING	740-1	644 (700-1)	740-134	740-2
			644 (700-134)	644 (700-2)

SE-3, 09 SEP 2021 to 07 OCT 2021

SE-3, 09 SEP 2021 to 07 OCT 2021