

LOC/DME I-DDO 110.5 Chan 42	APP CRS 005°	Rwy Idg TDZE Apt Elev 10000 88 96
--	------------------------	---

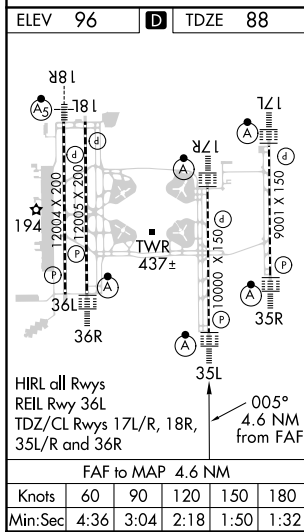
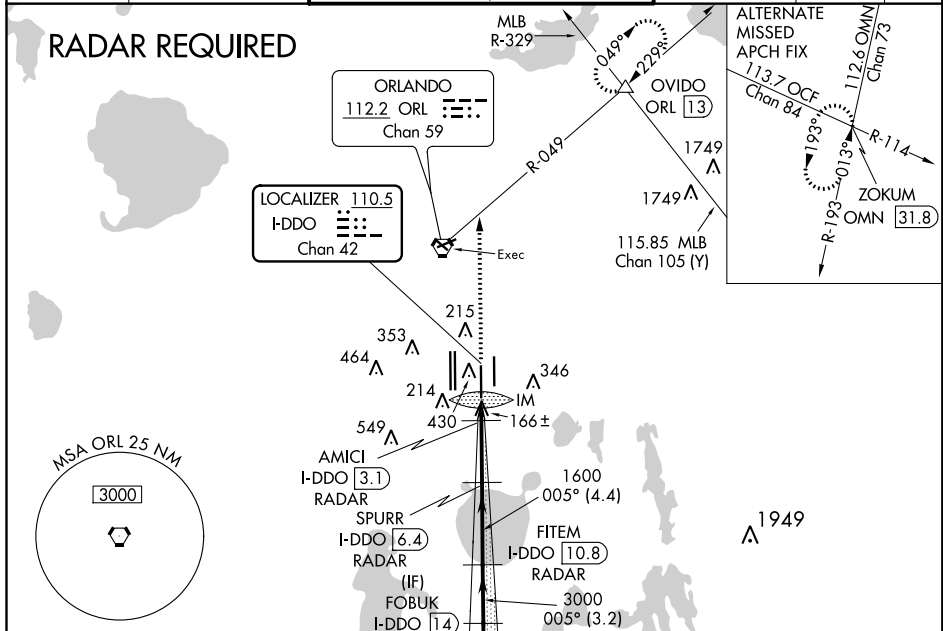
ILS or LOC RWY 35L

ORLANDO INTL (MCO)

⚠ DME or RADAR required. Bright lights on highway midway between Rwy 35L and Rwy 35R may be mistaken for runway lights. Simultaneous approach authorized. When using alternate missed approach, simultaneous approach NA.

ALSF-2
MISSED APPROACH: Climb to 3000 on heading 005° and ORL VORTAC R-049 to OVIDO INT/ORL 13 DME and hold.

D-ATIS ARR 121.25 DEF 120.525	ORLANDO APP CON 124.8 307.0	ORLANDO TOWER 118.45 253.5 (Rwys 17L-35R, 17R-35L) 124.3 253.5 (Rwys 18L-36R, 18R-36L)	GND CON (East) 126.4 (West) 121.8	CLNC DEL 134.7 341.7	CPDLC
---	---------------------------------------	--	--	--	-------



3000	hdg 005°	ORL R-049	OVIDO	VGSI and ILS glidepath not coincident (VGSI Angle 3.00/TCH 72).	NOGGI I-DDO [16.5] RADAR
*LOC only:					
I-DDO [1.8] RADAR	AMICI I-DDO [3.1] RADAR	I-DDO [6.4] RADAR	I-DDO [10.8] RADAR	I-DDO [14] RADAR	I-DDO [16.5] RADAR
540*			1600	3000	4000
0.1			1.2 NM	3.3 NM	4.4 NM
CATEGORY A			CATEGORY B		CATEGORY C
S-ILS 35L			288/18		200 (200-½)
S-LOC 35L			420/24		332 (400-½)
CIRCLING			740-1		644 (700-1)
			740-1¾		644 (700-1¾)
			740-2		644 (700-2)

SE-3, 09 SEP 2021 to 07 OCT 2021

SE-3, 09 SEP 2021 to 07 OCT 2021