


LOC/DME I-CER 111.15 Chan 48 (Y)	APP CRS 005°	Rwy Idg 9000 TDZE 90 Apt Elev 96
--	------------------------	---

ILS or LOC RWY 35R

ORLANDO INTL (MCO)

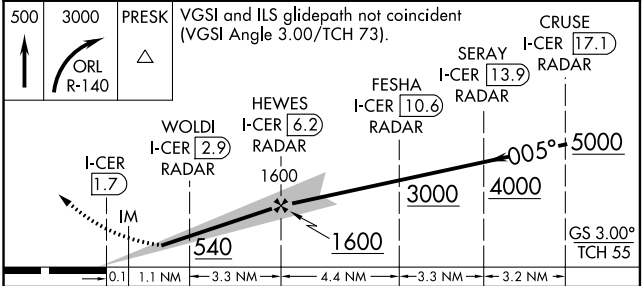
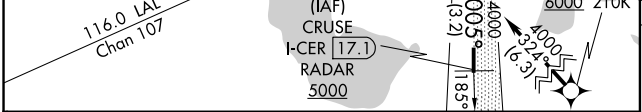
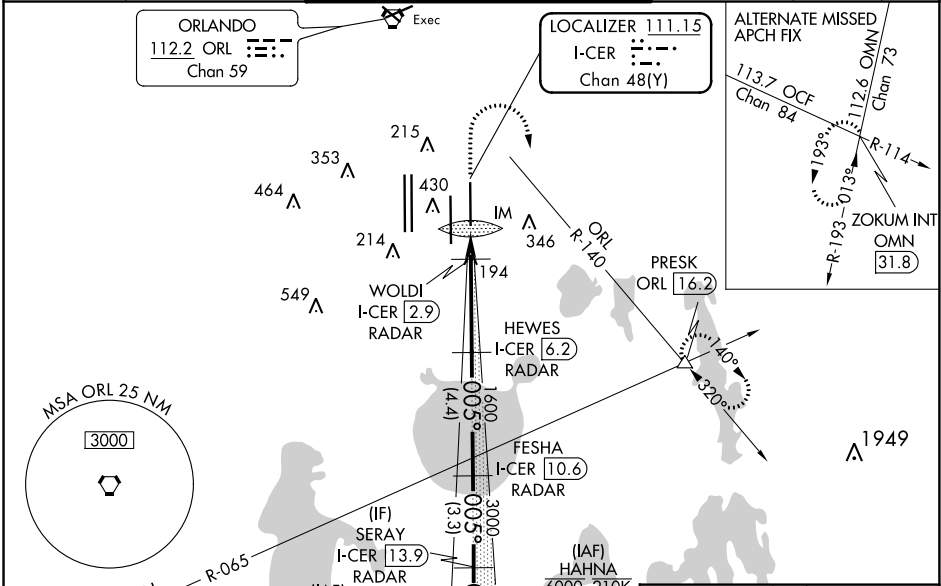
From HAHNA: RNAV 1-DME/DME/IRU or GPS required. Aircraft not DME/DME/IRU or GPS equipped-RADAR required for procedure entry. DME or RADAR required for LOC only.

ALSF-2 

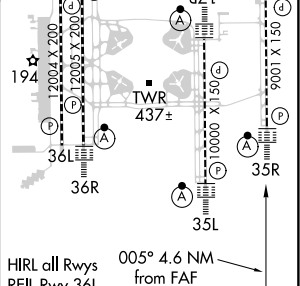
MISSED APPROACH: Climb to 500 then climbing right turn to 3000 on ORL VORTAC R-140 to PRESK INT/ORL 16.2 DME and hold, continue climb-in-hold to 3000.

Simultaneous approach authorized. Bright lights on highway midway between Rwy 35L and Rwy 35R may be mistaken for runway lights. For inop ALS, increase S-LOC 35R Cats C/D visibility to RVR 5500. When using alternate missed approach, simultaneous approach NA.

D-ATIS ARR 121.25 DEP 120.525	ORLANDO APP CON 124.8 307.0	ORLANDO TOWER 118.45 253.5 (Rwys 17L-35R, 17R-35L) 124.3 253.5 (Rwys 18L-36R, 18R-36L)	GND CON 126.4 (East) 121.8 (West)	CLNC DEL 134.7 341.7	CPDLC
---	---------------------------------------	--	---	--	-------



ELEV 96	D TDZE 90
----------------	-------------------------



CATEGORY	A	B	C	D
S-ILS 35R	290/18		200 (200-½)	
S-LOC 35R	460/24	370 (400-½)	460/35	370 (400-¾)
C CIRCLING	740-1	644 (700-1)	740-1¾	644 (700-2)

FAF to MAP 4.6 NM					
Knots	60	90	120	150	180
Min:Sec	4:36	3:04	2:18	1:50	1:32

SE-3, 09 SEP 2021 to 07 OCT 2021

SE-3, 09 SEP 2021 to 07 OCT 2021