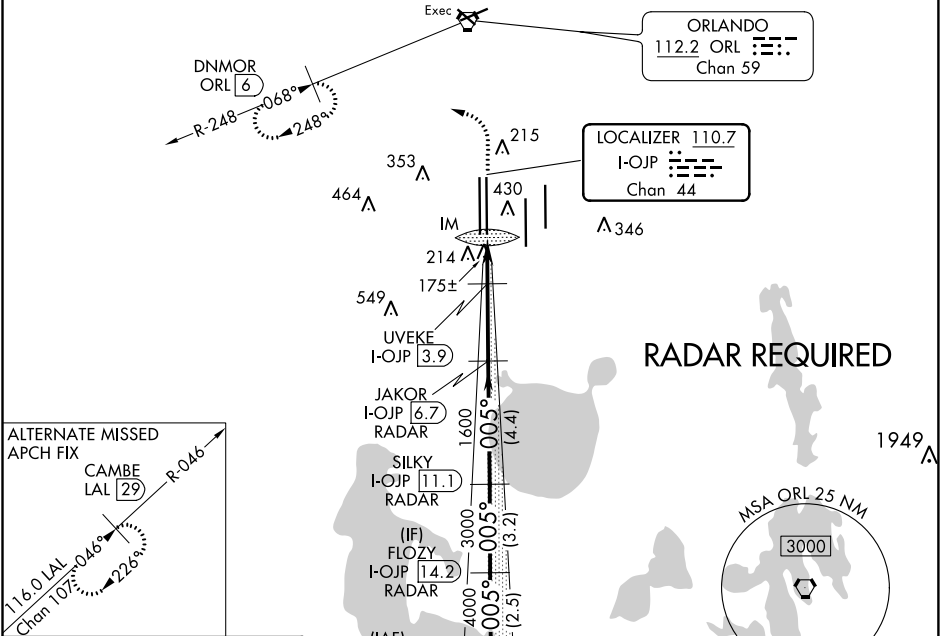


LOC/DME I-OJP <b>110.7</b> Chan <b>44</b>	APP CRS <b>005°</b>	Rwy Idg <b>11601</b> TDZE <b>92</b> Apt Elev <b>96</b>
---	------------------------	--

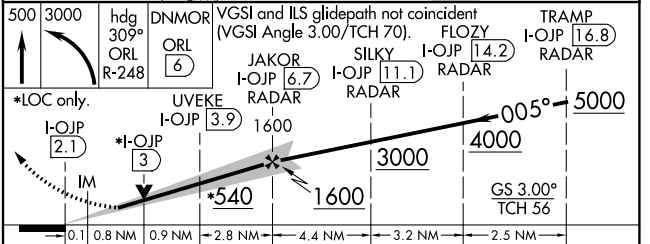
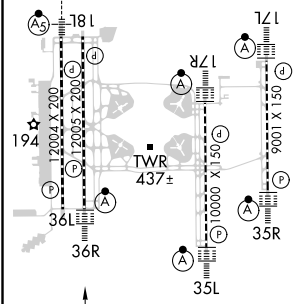
# ILS or LOC RWY 36R

ORLANDO INTL (MCO)

D-ATIS ARR <b>121.25</b> DEP <b>120.525</b>	ORLANDO APP CON <b>124.8 307.0</b>	ORLANDO TOWER <b>118.45 253.5</b> (Rwys 17L-35R,17R-35L) <b>124.3 253.5</b> (Rwys 18L-36R,18R-36L)		GND CON <b>126.4</b> (East) <b>121.8</b> (West)	CLNC DEL <b>134.7</b> <b>341.7</b>	CPDLC
		MISSED APPROACH: Climb to 500 then climbing left turn to 3000 on heading 309° and on ORL VORTAC R-248 to DNMR/ORL 6 DME and hold, continue climb-in-hold to 3000.		ALSF-2 		



ELEV 96	<b>D</b>	TDZE 92
---------	----------	---------



FAF to MAP 4.6 NM					
Knots	60	90	120	150	180
Min:Sec	4:36	3:04	2:18	1:50	1:32
S-ILS 36R	292/18				200 (200-½)
S-LOC 36R	540/24	448 (500-½)	540/45	448 (500-¾)	
<b>C</b> CIRCLING	740-1	644 (700-1)	740-1¾	740-2	644 (700-2)
UVEKE FIX MINIMUMS (DME REQUIRED)					
S-LOC 36R	440/24	348 (400-½)	440/30	348 (400-½)	
<b>C</b> CIRCLING	740-1	644 (700-1)	740-1¾	740-2	644 (700-2)

SE-3, 09 SEP 2021 to 07 OCT 2021

SE-3, 09 SEP 2021 to 07 OCT 2021